

United States Department of Agriculture

Forest Service

Colorado

2016

America's Great Outdoors

Motor Vehicle Use Map

Pike National Forest

South Platte Ranger District

VICINITY MAP

COHORADO

Index Map

INFORMATION SOURCES

South Platte Ranger District

19316 Goddard Ranch Court

Morrison, CO 80465

(303) 275-5610

Forest Supervisor

Pike and San Isabel National Forests

Cimarron and Comanche National Grasslands

2840 Kachina Drive

Pueblo, CO 81008

(719) 553-1400

In case of emergency: Dial 911

South Platte Ranger District Website:

http://www.fs.usda.gov/gto/psic/sopl

FS-873-0212

PURPOSE AND CONTENTS OF THIS MAP

The designations shown on this motor vehicle use map (MVUM) were made by the responsible official pursuant to 36 CFR 212.51; are effective as of the date on the front cover of this MVUM; and will remain in effect until superseded by the next year's MVUM.

South Platte District Ranger, Pike National Forest

It is the responsibility of the user to acquire the current MVUM. This MVUM shows the National Forest System roads, National Forest System trails, and the areas on National Forest System lands in the South Platte Ranger District that are designated for motor vehicle use pursuant to 36 CFR 212.51. This MVUM also identifies the vehicle classes allowed on each route and in each area, and any seasonal restrictions that apply on those routes and in those areas.

Designation of a road, trail, or area for motor vehicle use by a particular class of vehicle under 36 CFR 212.51 should not be interpreted as encouraging or inviting use, or implying that the road, trail or area is passable, actively maintained, or safe for travel. Motor vehicle designations include parking along designated routes and at facilities associated with designated routes when it is safe to do so and when not causing damage to National Forest System resources.

Seasonal weather conditions and natural events may render designated roads and trails impassable for extended periods. Designated areas may contain dangerous or impassable terrain. Many designated roads and trails may be passable only by high-clearance vehicles or four-wheel drive vehicles. Maintenance of designated roads and trails will depend on available resources, and many may receive little maintenance.

This motor vehicle use map identifies those roads, trails, and areas designated for motor vehicle use under 36 CFR 212.51 for the purpose of enforcing the prohibition at 36 CFR 261.13. This is a limited purpose. The other public roads are shown for information and navigation purposes only and are not subject to designation under the Forest Service travel management regulation.

These designations apply only to National Forest System roads, National Forest System trails, and areas on National Forest System lands.

OPERATOR RESPONSIBILITIES

Operating a motor vehicle on National Forest System roads, National Forest System trails, and in areas on National Forest System lands carries a greater responsibility than operating that vehicle in a city or other developed setting. Not only must you know and follow all applicable traffic laws, you need to show concern for the environment as well as other forest users. The misuse of motor vehicles can lead to the temporary or permanent closure of any designated road, trail, or area. As a motor vehicle operator, you are subject to State traffic law, including State requirements for licensing, registration, and operation of the vehicle in question.

Motor vehicle use, especially off-highway vehicle use, involves inherent risks that may cause property damage, serious injury, and possibly death to participants. Drive cautiously and anticipate rough surfaces and features, such as snow, mud, vegetation, and water crossings common to remote driving conditions. By your participation, you voluntarily assume full responsibility for these damages, risks, and dangers. Take care at all times to protect yourself and those under your responsibility.

Much of the South Platte Ranger District is remote. Medical assistance may not be readily available. Cellular telephones do not work in many areas of the South Platte Ranger District. Take adequate food, water, first aid supplies, and other equipment appropriate for the conditions and expected weather.

ALWAYS REMEMBER TO RESPECT PRIVATE LAND! PROTECT YOUR PRIVILEGE. STAY ON DESIGNATED ROADS AND TRAILS AND IN DESIGNATED AREAS.

Read and understand this map in its entirety. If you have questions, please contact the South Platte Ranger District for clarification.

As a motor vehicle operator on a National Forest System road, trail, or area, you must comply with this map, as well as all Federal, State, and local laws and regulations. Compliance with these rules is your responsibility.

treadlightly!

LEAVING A GOOD IMPRESSION

PROHIBITIONS

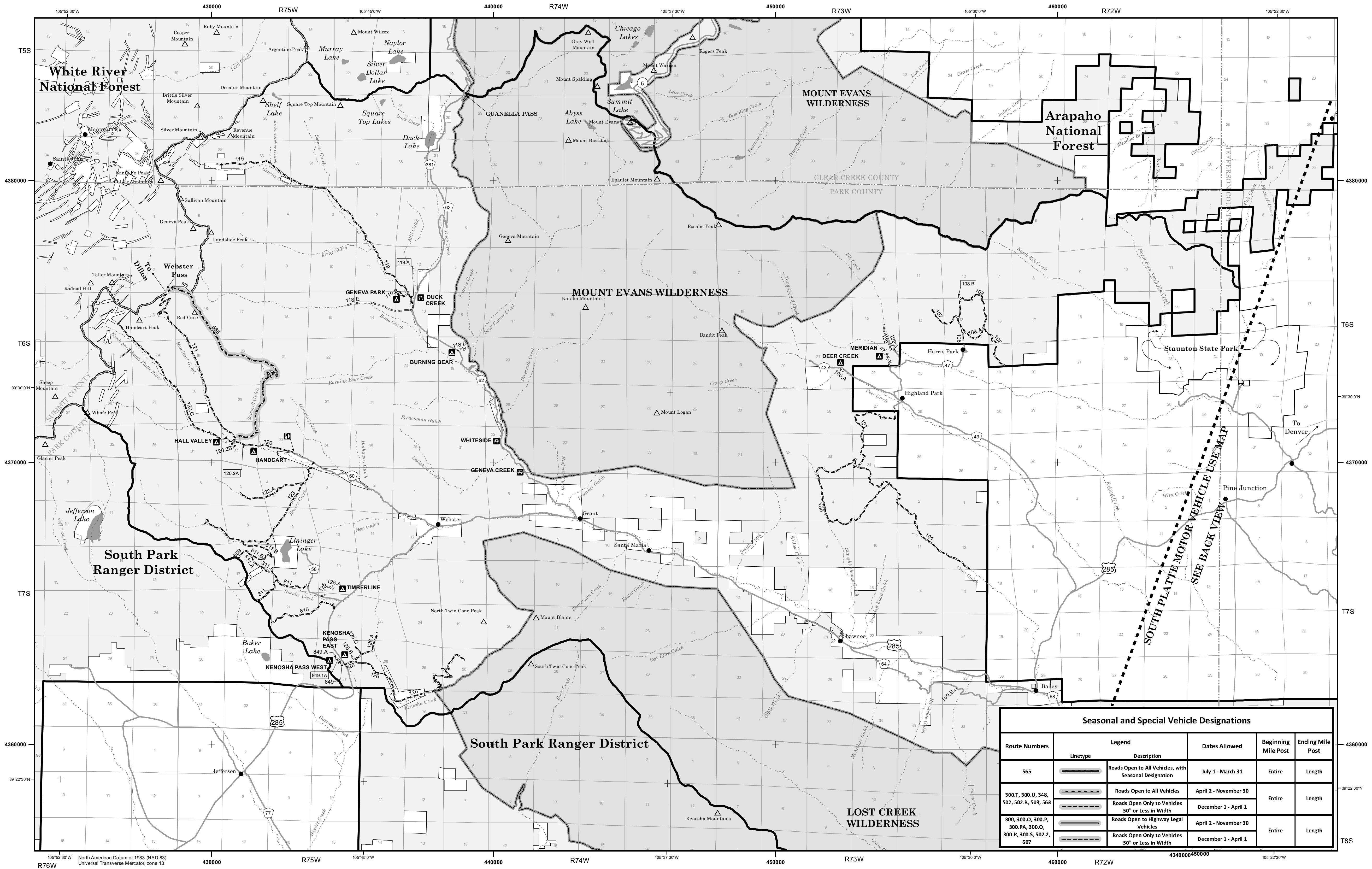
It is prohibited to possess or operate a motor vehicle on National Forest System lands on the South Platte Ranger District other than in accordance with these designations (36 CFR 261.13)

Violators of 36 CFR 261.13 are subject to a fine of up to \$5,000, imprisonment for up to 6 months, or both (18 U.S.C. 3571(e)). This prohibition applies regardless of the presence or absence of signs.

This map does not display nonmotorized uses, over-snow vehicle uses, or other facilities and attractions on the South Platte Ranger District. Obtain forest visitor information from the local national forest office.

Designated roads, trails and areas may also be subject to temporary, emergency closures. As a visitor, you must comply with signs notifying you of such restrictions. A national forest may issue an order to close a road, trail or area on a temporary basis to protect life, health, or safety of forest visitors or the natural or cultural resources in these areas. Such temporary and/or emergency closures are consistent with the Travel Management Rule (36 CFR 212.52(b); 36 CFR 261 subpart B).

The designation "road or trail open to all motor vehicles" does not supersede State traffic law.



Seasonal and Special Vehicle Designations					
Route Numbers	Unetype	Legend Description	Dates Allowed	Beginning Mile Post	Ending Mile Post
565		Roads Open to All Vehicles, with Seasonal Designation	July 1 - March 31	Entire	Length
300.T, 300.U, 348, 502, 502.B, 503, 563		Roads Open to All Vehicles	April 2 - November 30	Entire	Length
120.2A		Roads Open Only to Vehicles 50" or Less in Width	December 1 - April 1	Entire	Length
300, 300.O, 300.P, 300.PA, 300.O, 300.R, 300.S, 502.2, 507		Roads Open to Highway Legal Vehicles	April 2 - November 30	Entire	Length
		Roads Open Only to Vehicles 50" or Less in Width	December 1 - April 1	Entire	Length

Legend

Roads Open to Highway Legal Vehicles

Roads Open to All Vehicles

Roads with Special Vehicle Designation

Trails open to All Vehicles

Trails Open to Vehicles 50" or Less in Width

Trails Open to Motorcycles Only

Seasonal Designation (See Table)

Interstate Highways, US, State, County & Other Public Roads

Interstate Route Number

U.S. Highway Route Number

State Highway Route Number

County Road Number

Short Route Identifier (See Short Route Table)

Major Streams

Mountain Peaks

FS Campground

Picnic Area

Motorized Trailhead

Cities, Towns

Forest and District Boundary

National Forest System Lands

Non-National Forest System Lands within the National Forest

Wilderness Areas

County Boundary

Township and Range Lines

Section Lines

Lakes

Persons with disabilities who require alternative means for communication for program information (e.g., Braille, large print, audiotelephone, American Sign Language, etc.) should contact the responsible Agency or USDA's TARGET Center at (202) 720-2600 (voice and TTY) or contact USDA through the Federal Relay Service at (800) 877-8339. Additionally, program information may be made available in languages other than English.

To file a program discrimination complaint, complete the USDA Program Discrimination Complaint Form, AD-3027, found online at http://www.ascr.usda.gov/complaint_filing_cust.html and at any USDA office or write a letter addressed to USDA and provide in the letter all the information requested in the form. To request a copy of the complaint form, call (866) 632-9992. Submit your completed form or letter to USDA by: (1) mail: U.S. Department of Agriculture, Office of the Assistant Secretary for Civil Rights, 1400 Independence Avenue, S.W., Washington, D.C. 20250-9410; (2) fax: (202) 690-7442; or email: program.intake@usda.gov.

USDA is an equal opportunity provider, employer, and lender.

EXPLANATION OF LEGEND ITEMS

Roads Open to Highway Legal Vehicles Only:

Roads open only to motor vehicles licensed under State law for general operation on all public roads.

Roads Open to All Vehicles:

Roads open to all motor vehicles, including smaller off highway vehicles that may not be licensed for highway use (not to oversize or overweight vehicles under State traffic law).

Trails Open to All Vehicles:

Trails open to all motor vehicles, including both highway legal and nonhighway legal vehicles.

Trails Open to Vehicles 50" or Less in Width:

Trails open only to motor vehicles less than 50 inches in width at the widest point on the vehicle.

Trails Open to Motorcycles Only:

Trails open only to motorcycles. Sidecars are not permitted.

Special Vehicle Designation:

This symbol indicates the road or trail is open to classes of vehicles other than those listed above. Refer to the Seasonal and Special Vehicle Designations Table for further instructions.

Seasonal Designation:

This symbol, used in conjunction with one of the other road or trail symbols, indicates that the route is open only during certain portions of the year. Refer to the Seasonal and Special Vehicle Designations Table for further instructions.

Other Public Roads and Trails:

Interstate Highways, U.S., State, County & Other Public Roads

Used to show routes not designated for motorized use by the Forest Service. Part of the reference layers showing connections to towns and cities outside the forest boundary.

Short Route Identifier:

This symbol is used for routes that are too short to show a symbol type on the map. The symbol contains the number of the road or trail. Users should refer to the corresponding number in the Short Route Table for designation information.

Motorized Trail Access:

This symbol indicates a trailhead for access to a motorized route. Not all motorized routes have trailheads and those that do may range from primitive to developed.

SOUTH PLATTE RANGER DISTRICT
BLANKET STATEMENTS FOR TRAVEL MANAGEMENT

Map Revisions

The designations shown on this map will remain in effect until revised with the publication of a new map. In January of each year, this motor vehicle use map will either be revised with the publication of a new map, or it will be validated for the new year by the Ranger District with a red stamp that says: "Valid for Year 20__"

PARKING/DISPERSED CAMPING ON THE PIKE NATIONAL FOREST

Where designated parking areas are not available, and where not specifically prohibited, unsafe, or causing resource damage, parking on National Forest System lands within one vehicle length off of designated routes is authorized.

Dispersed camping is authorized on National Forest System lands except in specially designated areas that are closed to camping.

Motorized dispersed camping is authorized within one vehicle length off of designated National Forest System routes, where not specifically prohibited, unsafe, or causing resource damage.

Check with the local National Forest District office for current information on areas closed to camping and for other travel management information.

SHORT ROUTE TABLE		
Route Number	Route Designation	Length in Feet
108.B	Roads Open to Highway Legal Vehicles	476
109.B	Roads Open to Highway Legal Vehicles	528
119.A	Roads Open to All Vehicles	528
120.2A	Roads Open to All Vehicles	528
211.O	Roads Open to Highway Legal Vehicles	423
300.M	Roads Open to Highway Legal Vehicles	264
300.PA	Roads Open to Highway Legal Vehicles with Seasonal Designation	159
300.S	Roads Open to Highway Legal Vehicles with Seasonal Designation	528
300.U	Roads Open to All Vehicles with Seasonal Designation	317
300.B	Roads Open to All Vehicles	528
528.B	Roads Open to All Vehicles	528
533.B	Roads Open to Highway Legal Vehicles	528
533.C	Roads Open to Highway Legal Vehicles	528
533.D	Roads Open to Highway Legal Vehicles	528
533.E	Roads Open to Highway Legal Vehicles	264
533.F	Roads Open to Highway Legal Vehicles	264
533.G	Roads Open to Highway Legal Vehicles	528
533.J	Roads Open to Highway Legal Vehicles	264
533.L	Roads Open to Highway Legal Vehicles	529
849.1A	Roads Open to All Vehicles	159