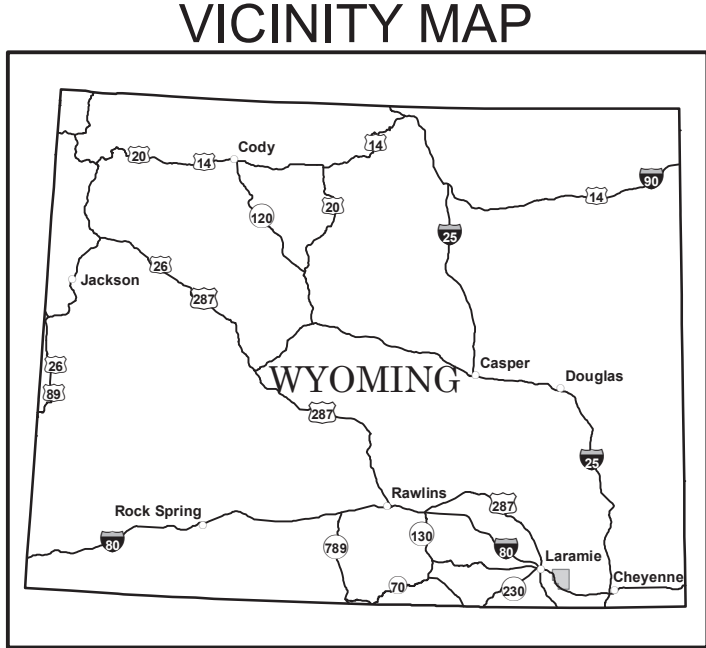




Motor Vehicle Use Map

Medicine Bow National Forest



INFORMATION SOURCES

Medicine Bow - Routt National Forests
Thunder Basin National Grassland
Headquarters
2468 Jackson Street
Laramie, WY 82070
Phone: (307) 745-2300

Laramie Ranger District
2468 Jackson Street
Laramie, WY 82070
Phone: (307) 745-2300

MedBow-Routt National Forests
website: www.fs.fed.us/r2/mbr/

In case of emergency, Dial 911

treadlightly!
LEAVING A GOOD IMPRESSION

Travel and recreate with minimum impact.

Respect the environment and the rights of others.

Educate yourself, plan and prepare before you go.

Allow for future use of the outdoors by leaving it better than you found it.

Discover the rewards of responsible recreation.

For more information on Tread Lightly!, go to www.treadlightly.org or call 1-800-966-9900.
FS-873-0206

PURPOSE AND CONTENTS OF THIS MAP

The designations shown on this motor vehicle use map are effective as of the date on the front cover and will remain in effect until superseded by the next year's motor vehicle use map. It is the responsibility of the user to acquire the current MV/UM. This map shows the National Forest System roads, National Forest System trails, and the areas on National Forest System lands in the Medicine Bow National Forest that are designated for motor vehicle use pursuant to 36 Code of Federal Regulations (CFR) 212.51. This map also contains a list of those designated roads, trails, and areas; the types of vehicles that are allowed on each route and in each area; and any seasonal restrictions that apply on those routes and in those areas.

Designation of a road, trail, or area for motor vehicle use by a particular class of vehicle under 36 CFR 212.51 should not be interpreted as encouraging or inviting use, or to imply that the road, trail, or area is passable, actively maintained, or safe for travel. Motor vehicle designations include parking along designated routes and at facilities associated with designated routes when it is safe to do so and when not causing damage to National Forest System resources. Seasonal weather conditions and natural events may render designated roads and trails impassable for extended periods. Designated areas may contain dangerous or impassable terrain. Many designated roads and trails may be passable only by high-clearance vehicles or four-wheel drive vehicles. Maintenance of designated roads and trails will depend on available resources, and many may receive little maintenance.

This motor vehicle use map identifies those roads, trails, and areas designated for the motor vehicle use under 36 CFR 212.51 for the purpose of enforcing the prohibition at 36 CFR 261.13. This is a limited purpose. The other public roads are shown for information and navigation purposes only and are not subject to designation under the Forest Service travel management regulation.

These designations apply only to National Forest System roads, National Forest System trails, and areas on National Forest System lands.

PROHIBITIONS

It is prohibited to possess or operate a motor vehicle on National Forest System lands on the Medicine Bow National Forest other than in accordance with these designations (36 CFR 261.13).

Violations of 36 CFR 261.13 are subject to a fine of up to \$5,000, imprisonment for up to 6 months or both (18 U.S.C. 3571(e)). This prohibition applies regardless of the presence or absence of signs.

This map does not display nonmotorized uses, over-snow uses, or other facilities and attractions on the Medicine Bow National Forest. Obtain a forest visitor map for more complete information.

Designated roads, trails, and areas may also be subject to temporary, emergency closures, and visitors must comply with signs notifying them of such restrictions. A national forest may issue an order to close a road, trail, or area on a temporary basis to protect the life, health or safety of forest visitors or the natural or cultural resources in these areas. Such a temporary and/or emergency closures are consistent with the Travel Management Rule (36 CFR 212.52 (b); 36 CFR 261 subpart B).

The designation "road or trail open to all motor vehicles" does not supersede State traffic law.

OPERATOR RESPONSIBILITIES

Operating a motor vehicle on National Forest System roads, National Forest System trails, and in areas on National Forest System lands carries a greater responsibility than operating that vehicle in a city or other developed setting. Not only must the motor vehicle operators know and follow all applicable traffic laws, but they need to show concern for the environment as well as other forest users. The misuse of motor vehicles can lead to the temporary or permanent closure of any designated road, trail, or area. As a motor vehicle operator, you are subject to State traffic law, including State requirements for licensing, registration, and operation of the vehicle in question.

Motor vehicle use, especially off-highway vehicle use, involves inherent risks that may cause property damage, serious injury, and possibly death to participants. Drive cautiously and anticipate rough surfaces and features, such as snow, mud, vegetation, and water crossings common to remote driving conditions. By your participation, you voluntarily assume full responsibility for these damages, risks, and dangers. Take care at all times to protect yourself and those under your responsibility.

Much of the Medicine Bow National Forest is remote. Medical assistance may not be readily available. Cellular telephones do not work in many areas of the Medicine Bow National Forest. Take adequate food, water, first aid supplies, and other equipment appropriate for the conditions and expected weather.

ALWAYS REMEMBER TO RESPECT PRIVATE LAND! PROTECT YOUR PRIVILEGE. STAY ON DESIGNATED ROADS AND TRAILS AND IN DESIGNATED REAS.

Read and understand this map in its entirety. If you have questions please contact the Medicine Bow National Forest for clarification.

As a motor vehicle operator on a National Forest System road, trail, or area, you must comply with this map, as well as all Federal, State, and local laws and regulations. Compliance with these rules is your responsibility.

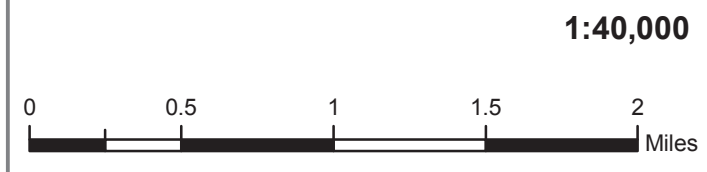
The U.S. Department of Agriculture (USDA) prohibits discrimination in all its programs and activities on the basis of race, color, national origin, age, disability, and where applicable, sex, marital status, familial status, parental status, religion, sexual orientation, genetic information, political beliefs, reprisal, or because all or part of an individual's income is derived from any public assistance program. (Not all prohibited bases apply to all programs.) Persons with disabilities who require alternative means for communication of program information (Braille, large print, audiotope, etc.) should contact USDA's TARGET Center at (202) 720-2600 (voice and TDD). To file a complaint of discrimination, write to USDA, Director, Office of Civil Rights, 1400 Independence Avenue, S.W., Washington, D.C. 20250-9410, or call (800) 795-3272 (voice) or (202) 720-6382 (TDD). USDA is an equal opportunity provider and employer.

Legend

- Roads Open to All Vehicles
- Seasonal Designation (See Table)
- Dispersed Camping/Game Retrieval (See Table DC/GR Information)
- Interstate
- Highways, US, State
- Other Public Roads

- FS Campground
- Information Site
- Picnic Area
- Peaks

- Forest or Unit Boundary
- National Forest System Lands
- Non-National Forest System Lands within this National Forest
- Township and Range Lines
- Section Lines
- Lakes



EXPLANATION OF LEGEND ITEMS

Roads Open to All Vehicles:

These roads are open to all motor vehicles, including smaller off-highway vehicles that may not be licensed for highway use (but not to oversize or overweight vehicles under State traffic law).

Seasonal Designation:

This symbol, used in conjunction with one of the other road or trail symbols, indicates that the road or trail is open only during certain portions of the year. Refer to Seasonal and Special Designation Table for further instructions.

Dispersed Camping/Game Retrieval:

This symbol is used along with a designated road or trail to indicate limited cross-country motor vehicle use within a specific distance of that route, solely for the purpose of dispersed camping and/or game retrieval. The dots indicate where this activity is permitted. They may be on the left, right, or both sides of the route. Refer to the Dispersed Camping/Game Retrieval Table for specifics.

Other Public Roads:

- Interstate
- Highways, U.S., State
- Other Public Roads

These symbols are used to show routes the Forest Service does not have jurisdiction over and has not designated for motorized use. These symbols are part of the reference layers showing connections to towns and cities outside the forest boundary.

Dispersed Camping/Game Retrieval

Motor vehicle use off of designated roads for the purpose of dispersed camping and/or game retrieval is permitted for up to 100 feet from the centerline of the road, allowing the same vehicles as the road allows and the same season as the road is open.

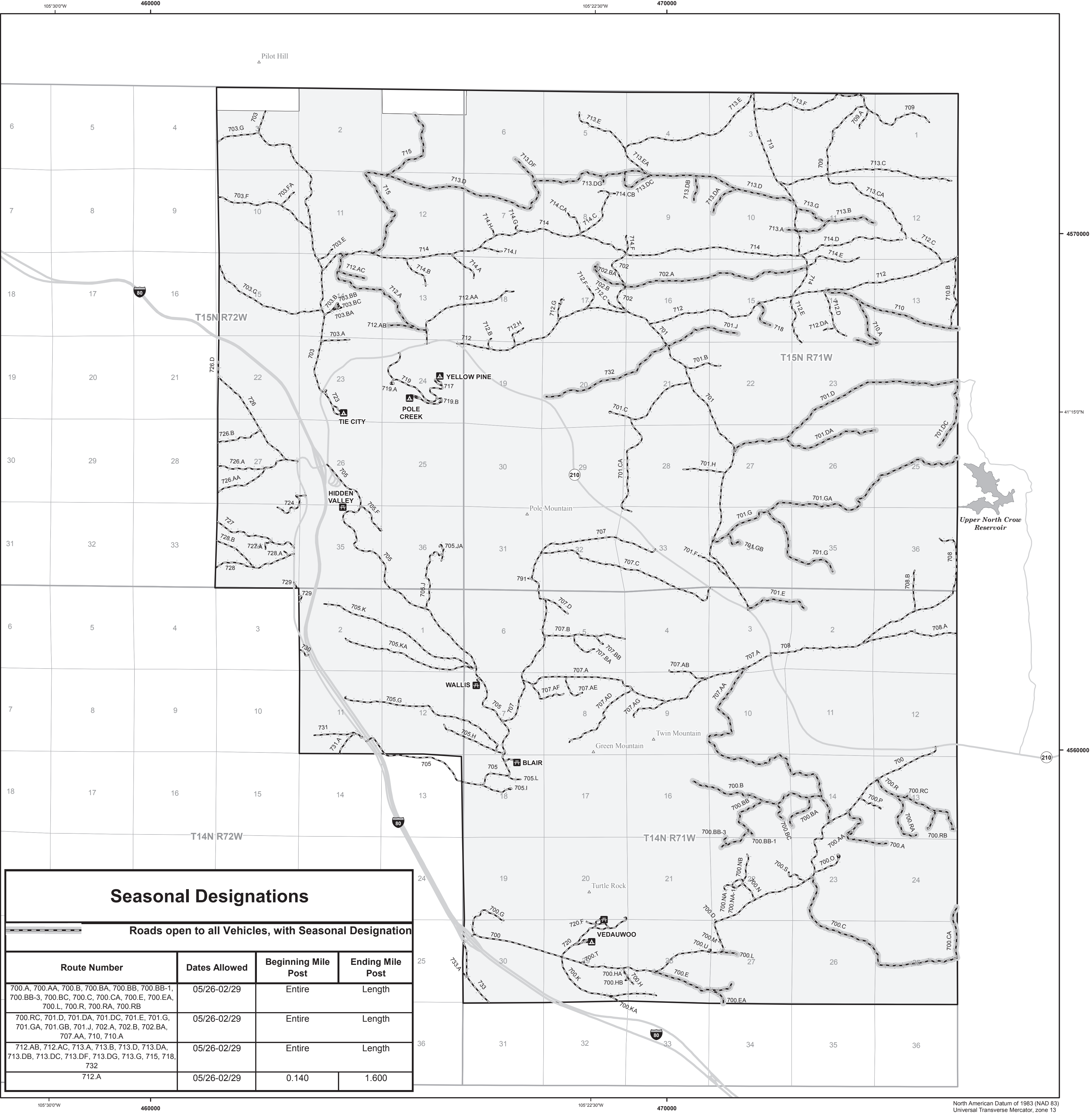
When a big game animal has been taken, the individual who legally took the animal may drive or be driven to the downed animal. Under no circumstances may a second vehicle be used to retrieve the animal. The vehicle driven to the animal should be of sufficient capacity that only one trip is necessary. The number of individuals who participate in the retrieval is limited only by the vehicle's capacity, and the willingness of others to walk to and from the downed animal.

The vehicle used to retrieve the game may be operated off the route up to the distance specified on the MV/UM. If the downed game is further than the allowed distance, the vehicle may be driven only the specified distance from the designated route.

Motorized access for dispersed camping and/or game retrieval is allowed only on National Forest System Land.

This applies to the following roads:

700, 700.A, 700.AA, 700.B, 700.BA, 700.BB, 700.BB-1, 700.BB-3, 700.BC, 700.C, 700.CA, 700.D, 700.E, 700.EA, 700.G, 700.H, 700.HA, 700.HB, 700.K, 700.KA, 700.L, 700.LA, 700.N, 700.NA, 700.NA-1, 700.NB, 700.P, 700.P, 700.R, 700.RA, 700.RB, 700.RC, 700.S, 700.T, 700.U, 700.V, 701, 701.B, 701.C, 701.CA, 701.D, 701.DA, 701.DC, 701.E, 701.F, 701.G, 701.GA, 701.GB, 701.H, 701.J, 702, 702.A, 702.B, 702.BA, 702.D, 703, 703.A, 703.B, 703.BA, 703.BB, 703.BC, 703.C, 703.E, 703.F, 703.FA, 703.G, 705, 705.F, 705.G, 705.H, 705.I, 705.J, 705.JA, 705.K, 705.KA, 705.L, 707, 707.A, 707.AA, 707.AB, 707.AD, 707.AE, 707.AF, 707.AG, 707.B, 707.BA, 707.BB, 707.C, 707.D, 708, 708.A, 708.B, 709, 709.A, 710, 710A, 710.B, 712, 712.A, 712.AA, 712.AB, 712.AC, 712.B, 712.C, 712.D, 712.DA, 712.E, 712.F, 712.G, 712.H, 713, 713.A, 713.B, 713.C, 713.D, 713.DA, 713.DB, 713.DC, 713.DG, 713.DG, 713.DG, 713.E, 713.EA, 713.F, 713.G, 714, 714.A, 714.B, 714.C, 714.CA, 714.CB, 714.D, 714.E, 714.F, 714.G, 714.H, 714.I, 715, 718, 724, 726, 726.A, 726.AA, 726.B, 726.D, 727, 727.A, 728, 728.A, 728.B, 729, 730, 731, 731.A, 732, 733



Seasonal Designations				
Roads open to all Vehicles, with Seasonal Designation				
Route Number	Dates Allowed	Beginning Mile Post	Ending Mile Post	
700.A, 700.AA, 700.B, 700.BA, 700.BB, 700.BB-1, 700.BB-3, 700.BC, 700.C, 700.CA, 700.E, 700.EA, 700.L, 700.LA, 700.R, 700.RA, 700.RB	05/26-02/29	Entire	Length	
700.RC, 701.D, 701.DA, 701.DC, 701.E, 701.G, 701.GA, 701.GB, 701.J, 702.A, 702.B, 702.BA, 702.C, 702.D, 703, 703.A, 703.B, 703.BA, 703.BB, 703.BC, 703.C, 703.E, 703.F, 703.FA, 703.G, 705, 705.F, 705.G, 705.H, 705.I, 705.J, 705.JA, 705.K, 705.KA, 705.L, 707, 707.A, 707.AA, 707.AB, 707.AD, 707.AE, 707.AF, 707.AG, 707.B, 707.BA, 707.BB, 707.C, 707.D, 708, 708.A, 708.B, 709, 709.A, 710, 710A, 710.B, 712, 712.A, 712.AA, 712.AB, 712.AC, 712.B, 712.C, 712.D, 712.DA, 712.E, 712.F, 712.G, 712.H, 713, 713.A, 713.B, 713.C, 713.D, 713.DA, 713.DB, 713.DC, 713.DG, 713.DG, 713.DG, 713.E, 713.EA, 713.F, 713.G, 714, 714.A, 714.B, 714.C, 714.CA, 714.CB, 714.D, 714.E, 714.F, 714.G, 714.H, 714.I, 715, 718, 724, 726, 726.A, 726.AA, 726.B, 726.D, 727, 727.A, 728, 728.A, 728.B, 729, 730, 731, 731.A, 732, 733	05/26-02/29	Entire	Length	
712.A, 712.B, 712.C, 712.D, 712.E, 712.F, 712.G, 712.H, 713, 713.A, 713.B, 713.C, 713.D, 713.DA, 713.DB, 713.DC, 713.DG, 713.DG, 713.DG, 713.E, 713.EA, 713.F, 713.G, 714, 714.A, 714.B, 714.C, 714.CA, 714.CB, 714.D, 714.E, 714.F, 714.G, 714.H, 714.I, 715, 718, 724, 726, 726.A, 726.AA, 726.B, 726.D, 727, 727.A, 728, 728.A, 728.B, 729, 730, 731, 731.A, 732, 733	05/26-02/29	0.140	1.600	