

United States Department of Agriculture
Forest Service
Jan 2015

Wyoming
America's Great Outdoors
Hayden Ranger District
Laramie and Brush Creek
Sierra Madre
AND
SNOWY RANGE
National Forest
Medicine Bow
Use Map
Motor Vehicle

PURPOSE AND CONTENTS OF THIS MAP

The designations shown on this motor vehicle use map (MVUM) were made by the responsible official pursuant to 36 CFR 212.51, are effective as of the date on the front cover of this MVUM, and will remain in effect until superseded by next year's MVUM.

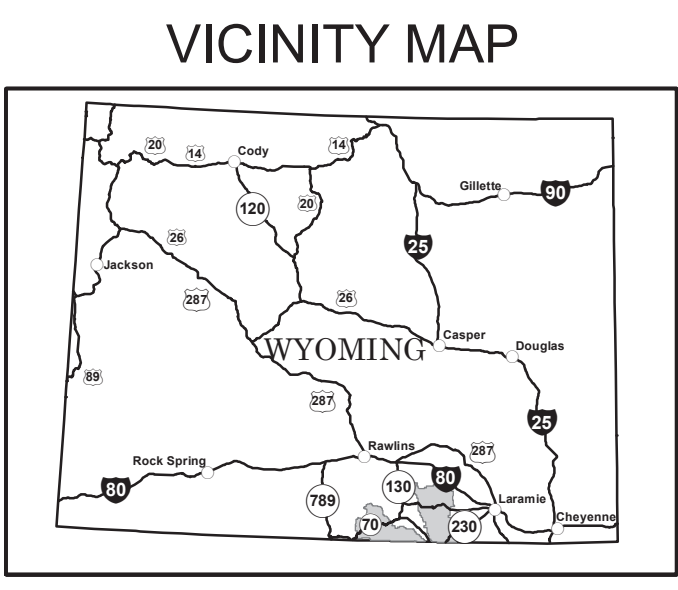
Smoky Bear
Forest Supervisor, Smokey Bear National Forest

It is the responsibility of the user to acquire the current MVUM. This MVUM shows the National Forest System roads, National Forest System trails, and the areas on National Forest System lands in the Medicine Bow National Forest that are designated for motor vehicle use pursuant to 36 CFR 212.51. This MVUM also identifies the vehicle classes allowed on each route and in each area; and any seasonal restrictions that apply on those routes and in those areas.

Designation of a road, trail, or area for motor vehicle use by a particular class of vehicle under 36 CFR 212.51 should not be interpreted as encouraging or inviting use or implying that the road, trail, or area is passable, actively maintained, or safe for travel. Motor vehicle designations include parking along designated routes and at facilities associated with designated routes when it is safe to do so and when not causing damage to National Forest System resources. Seasonal weather conditions and natural events may render designated roads and trails impassable for extended periods. Designated areas may contain dangerous or impassable terrain. Many designated roads and trails may be passable only by high-clearance vehicles or four-wheel-drive vehicles. Maintenance of designated roads and trails will depend on available resources, and many may receive little maintenance.

This motor vehicle use map identifies those roads, trails, and areas designated for the motor vehicle use under 36 CFR 212.51 for the purpose of enforcing the prohibition at 36 CFR 261.13. This is a limited purpose. The other public roads are shown for information and navigation purposes only and are not subject to designation under the Forest Service travel management regulation.

These designations apply only to National Forest System roads, National Forest System trails, and areas on National Forest System lands.



INFORMATION SOURCES

Medicine Bow - Routt National Forests
Thunder Basin National Grassland
Headquarters
2468 Jackson Street
Laramie, Wyoming 82070
Phone: (307) 745-2300

Brush Creek - Hayden Ranger District
South Hwy. 130/230, PO Box 249
Saratoga, Wyoming 82331
Phone: (307) 326-5258

Laramie Ranger District
2468 Jackson Street
Laramie, Wyoming 82070
Phone: (307) 455-2300

MedBow-Routt National Forests
website: www.fs.fed.us/r2/mbr/

In case of emergency, Dial 911

FOREST SERVICE
U.S. DEPARTMENT OF AGRICULTURE

treadlightly!
LEAVING A GOOD IMPRESSION

Travel and recreate with minimum impact.
Respect the environment and the rights of others.
Educate yourself, plan and prepare before you go.
Allow for future use of the outdoors by leaving it better than you found it.
Discover the rewards of responsible recreation.
For more information on Tread Lightly!, go to www.treadlightly.org or call 1-800-966-9900.

The U.S. Department of Agriculture (USDA) prohibits discrimination in all its programs and activities on the basis of race, color, national origin, age, disability and where applicable, sex, marital status, familial status, parental status, religion, sexual orientation, genetic information, political beliefs, reprisal, or because all or part of an individual's income is derived from any public assistance program. (Not all prohibited bases apply to all programs.) Persons with disabilities who require alternative means for communication of program information (Braille, large print, audiotape, etc.) should contact USDA's TARGET Center at (202) 720-2600 (voice and TDD). To file a complaint of discrimination, write to USDA, Director, Office of Civil Rights, 1400 Independence Avenue, S.W., Washington, D.C. 20250-9410, or call (800) 795-3272 (voice) or (202) 720-6382 (TDD). USDA is an equal opportunity provider and employer.

PROHIBITIONS

It is prohibited to possess or operate a motor vehicle on National Forest System lands on the Medicine Bow National Forest other than in accordance with these designations (36 CFR 261.13).

Violators of 36 CFR 261.13 are subject to a fine of up to \$5,000, imprisonment for up to 6 months, or both (18 U.S.C. 3571(a)). This prohibition applies regardless of the presence or absence of signs.

This map does not display nonmotorized uses, over-snow vehicle uses, or other facilities and attractions on the Medicine Bow National Forest. Obtain forest visitor information from the local national forest office.

Designated roads, trails and areas may also be subject to temporary emergency closures. As a visitor, you must comply with signs notifying you of such restrictions. A national forest may issue an order to close a road, trail or area on a temporary basis to protect the life, health, or safety of forest visitors or the natural or cultural resources in these areas. Such a temporary and/or emergency closure is consistent with the Travel Management Rule (36 CFR 212.52 (b), 36 CFR 261 subpart B).

The designation "road or trail open to all motor vehicles" does not supersede State traffic law.

OPERATOR RESPONSIBILITIES

Operating a motor vehicle on National Forest System roads, National Forest System trails, and in areas on National Forest System lands carries a greater responsibility than operating that vehicle in a city or other developed setting. Not only must you know and follow all applicable traffic laws, you need to show concern for the environment as well as other forest users. The misuse of motor vehicles can lead to the temporary or permanent closure of any designated road, trail, or area. As a motor vehicle operator, you are also subject to State traffic law, including State requirements for licensing, registration, and operation of the vehicle in question.

Motor vehicle use, especially off-highway vehicle use, involves inherent risks that may cause property damage, serious injury, and possibly death to participants. Drive cautiously and anticipate rough surfaces and features, such as snow, mud, vegetation, and water crossings common to remote driving conditions. By your participation, you voluntarily assume full responsibility for these damages, risks, and dangers. Take care at all times to protect yourself and those under your responsibility.

Much of the Medicine Bow National Forest is remote. Medical assistance may not be readily available. Cellular telephones do not work in many areas of the Medicine Bow National Forest. Take adequate food, water, first-aid supplies, and other equipment appropriate for the conditions and expected weather.

ALWAYS REMEMBER TO RESPECT PRIVATE LAND. PROTECT YOUR PRIVILEGE. STAY ON DESIGNATED ROADS AND TRAILS AND IN DESIGNATED AREAS.

Read and understand this map in its entirety. If you have questions, please contact the Medicine Bow National Forest for clarification.

As a motor vehicle operator on a National Forest System road, trail, or area you must comply with this map, as well as all Federal, State, and local laws and regulations. Compliance with these rules is your responsibility.

DISPERSED CAMPING/GAME RETRIEVAL

Motor vehicle use off of designated roads for the purpose of dispersed camping and/or game retrieval is permitted for up to 300 feet from the centerline of the road, allowing the same vehicles as the road allows and the same season as the road is open.

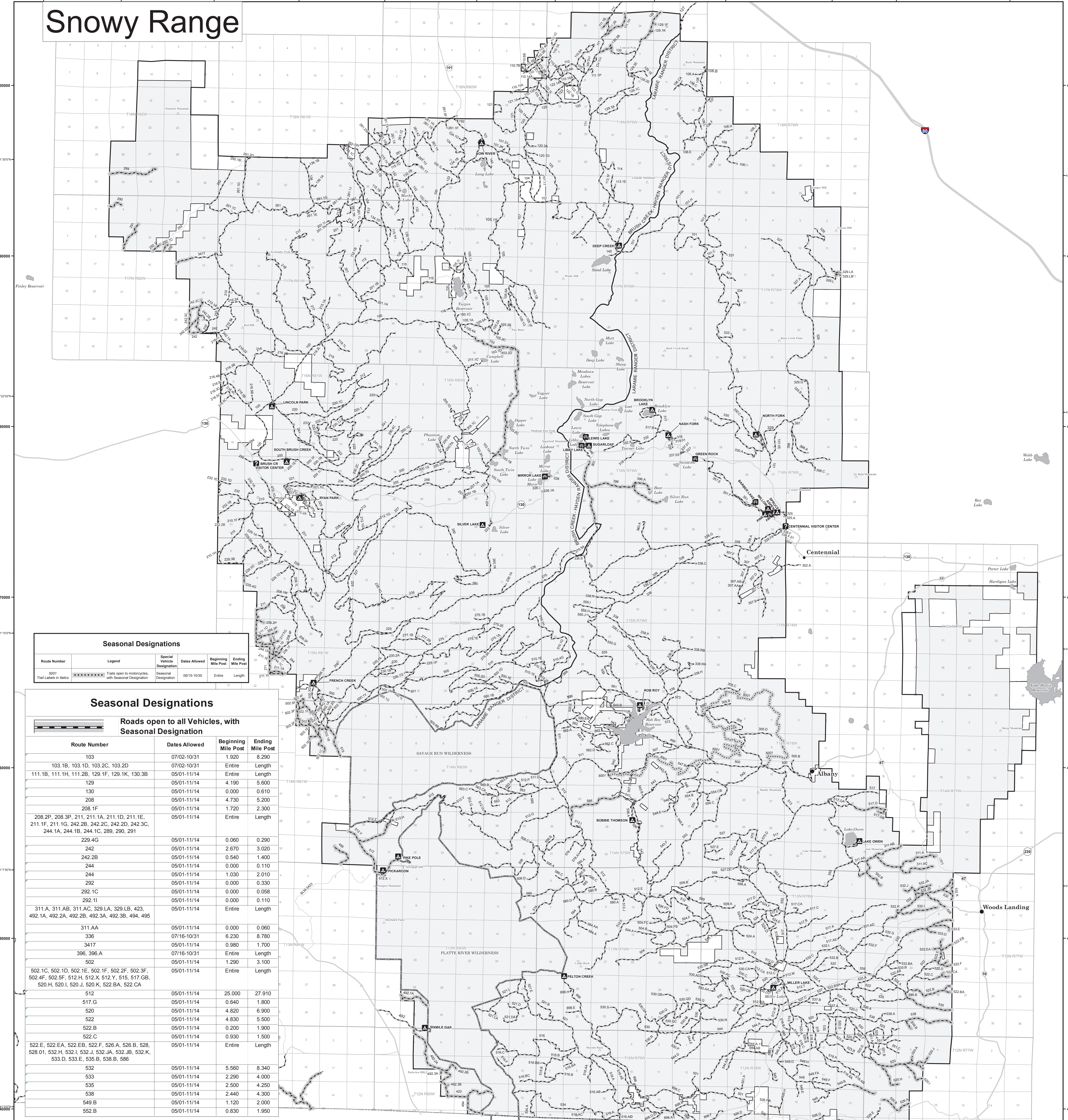
When a big game animal has been taken, the individual who legally took the animal may drive or be driven to the downed animal. Under no circumstances may a second vehicle be used to retrieve the animal. The vehicle driven to the animal should be of sufficient capacity that only one trip is necessary. The number of individuals who participate in the retrieval is limited only by the vehicle's capacity, and the willingness of others to walk to and from the downed animal.

The vehicle used to retrieve the game may be operated off the route up to the distance specified on the MVUM. If the downed game is further than the allowed distance, the vehicle may be driven only the specified distance from the designated route.

Motorized access for dispersed camping and/or game retrieval is allowed on National Forest System land.

This applies to the following roads:

100, 101, 101.1, 101.15, 101.17, 101.2, 101.2K, 101.2L, 101.2M, 101.2N, 101.2O, 101.2P, 101.2Q, 101.2R, 101.2S, 101.2T, 101.2U, 101.2V, 101.2W, 101.2X, 101.2Y, 101.2Z, 101.2AA, 101.2AB, 101.2AC, 101.2AD, 101.2AE, 101.2AF, 101.2AG, 101.2AH, 101.2AI, 101.2AJ, 101.2AK, 101.2AL, 101.2AM, 101.2AN, 101.2AO, 101.2AP, 101.2AQ, 101.2AR, 101.2AS, 101.2AT, 101.2AU, 101.2AV, 101.2AW, 101.2AX, 101.2AY, 101.2AZ, 101.2BA, 101.2BB, 101.2BC, 101.2BD, 101.2BE, 101.2BF, 101.2BG, 101.2BH, 101.2BI, 101.2BJ, 101.2BK, 101.2BL, 101.2BM, 101.2BN, 101.2BO, 101.2BP, 101.2BQ, 101.2BR, 101.2BS, 101.2BT, 101.2BU, 101.2BV, 101.2BW, 101.2BX, 101.2BY, 101.2BZ, 101.2CA, 101.2CB, 101.2CC, 101.2CD, 101.2CE, 101.2CF, 101.2CG, 101.2CH, 101.2CI, 101.2CJ, 101.2CK, 101.2CL, 101.2CM, 101.2CN, 101.2CO, 101.2CP, 101.2CQ, 101.2CR, 101.2CS, 101.2CT, 101.2CU, 101.2CV, 101.2CW, 101.2CX, 101.2CY, 101.2CZ, 101.2DA, 101.2DB, 101.2DC, 101.2DD, 101.2DE, 101.2DF, 101.2DG, 101.2DH, 101.2DI, 101.2DJ, 101.2DK, 101.2DL, 101.2DM, 101.2DN, 101.2DO, 101.2DP, 101.2DQ, 101.2DR, 101.2DS, 101.2DT, 101.2DU, 101.2DV, 101.2DW, 101.2DX, 101.2DY, 101.2DZ, 101.2EA, 101.2EB, 101.2EC, 101.2ED, 101.2EE, 101.2EF, 101.2EG, 101.2EH, 101.2EI, 101.2EJ, 101.2EK, 101.2EL, 101.2EM, 101.2EN, 101.2EO, 101.2EP, 101.2EQ, 101.2ER, 101.2ES, 101.2ET, 101.2EU, 101.2EV, 101.2EW, 101.2EX, 101.2EY, 101.2EZ, 101.2FA, 101.2FB, 101.2FC, 101.2FD, 101.2FE, 101.2FF, 101.2FG, 101.2FH, 101.2FI, 101.2FJ, 101.2FK, 101.2FL, 101.2FM, 101.2FN, 101.2FO, 101.2FP, 101.2FQ, 101.2FR, 101.2FS, 101.2FT, 101.2FU, 101.2FV, 101.2FW, 101.2FX, 101.2FY, 101.2FZ, 101.2GA, 101.2GB, 101.2GC, 101.2GD, 101.2GE, 101.2GF, 101.2GG, 101.2GH, 101.2GI, 101.2GJ, 101.2GK, 101.2GL, 101.2GM, 101.2GN, 101.2GO, 101.2GP, 101.2GQ, 101.2GR, 101.2GS, 101.2GT, 101.2GU, 101.2GV, 101.2GW, 101.2GX, 101.2GY, 101.2GZ, 101.2HA, 101.2HB, 101.2HC, 101.2HD, 101.2HE, 101.2HF, 101.2HG, 101.2HH, 101.2HI, 101.2HJ, 101.2HK, 101.2HL, 101.2HM, 101.2HN, 101.2HO, 101.2HP, 101.2HQ, 101.2HR, 101.2HS, 101.2HT, 101.2HU, 101.2HV, 101.2HW, 101.2HX, 101.2HY, 101.2HZ, 101.2IA, 101.2IB, 101.2IC, 101.2ID, 101.2IE, 101.2IF, 101.2IG, 101.2IH, 101.2II, 101.2IJ, 101.2IK, 101.2IL, 101.2IM, 101.2IN, 101.2IO, 101.2IP, 101.2IQ, 101.2IR, 101.2IS, 101.2IT, 101.2IU, 101.2IV, 101.2IW, 101.2IX, 101.2IY, 101.2IZ, 101.2JA, 101.2JB, 101.2JC, 101.2JD, 101.2JE, 101.2JF, 101.2JG, 101.2JH, 101.2JI, 101.2JJ, 101.2JK, 101.2JL, 101.2JM, 101.2JN, 101.2JO, 101.2JP, 101.2JQ, 101.2JR, 101.2JS, 101.2JT, 101.2JU, 101.2JV, 101.2JW, 101.2JX, 101.2JY, 101.2JZ, 101.2KA, 101.2KB, 101.2KC, 101.2KD, 101.2KE, 101.2KF, 101.2KG, 101.2KH, 101.2KI, 101.2KJ, 101.2KK, 101.2KL, 101.2KM, 101.2KN, 101.2KO, 101.2KP, 101.2KQ, 101.2KR, 101.2KS, 101.2KT, 101.2KU, 101.2KV, 101.2KW, 101.2KX, 101.2KY, 101.2KZ, 101.2LA, 101.2LB, 101.2LC, 101.2LD, 101.2LE, 101.2LF, 101.2LG, 101.2LH, 101.2LI, 101.2LJ, 101.2LK, 101.2LM, 101.2LN, 101.2LO, 101.2LP, 101.2LQ, 101.2LR, 101.2LS, 101.2LT, 101.2LU, 101.2LV, 101.2LW, 101.2LX, 101.2LY, 101.2LZ, 101.2MA, 101.2MB, 101.2MC, 101.2MD, 101.2ME, 101.2MF, 101.2MG, 101.2MH, 101.2MI, 101.2MJ, 101.2MK, 101.2ML, 101.2MN, 101.2MO, 101.2MP, 101.2MQ, 101.2MR, 101.2MS, 101.2MT, 101.2MU, 101.2MV, 101.2MW, 101.2MX, 101.2MY, 101.2MZ, 101.2NA, 101.2NB, 101.2NC, 101.2ND, 101.2NE, 101.2NF, 101.2NG, 101.2NH, 101.2NI, 101.2NJ, 101.2NK, 101.2NL, 101.2NM, 101.2NN, 101.2NO, 101.2NP, 101.2NQ, 101.2NR, 101.2NS, 101.2NT, 101.2NU, 101.2NV, 101.2NW, 101.2NX, 101.2NY, 101.2NZ, 101.2OA, 101.2OB, 101.2OC, 101.2OD, 101.2OE, 101.2OF, 101.2OG, 101.2OH, 101.2OI, 101.2OJ, 101.2OK, 101.2OL, 101.2OM, 101.2ON, 101.2OO, 101.2OP, 101.2OQ, 101.2OR, 101.2OS, 101.2OT, 101.2OU, 101.2OV, 101.2OW, 101.2OX, 101.2OY, 101.2OZ, 101.2PA, 101.2PB, 101.2PC, 101.2PD, 101.2PE, 101.2PF, 101.2PG, 101.2PH, 101.2PI, 101.2PJ, 101.2PK, 101.2PL, 101.2PM, 101.2PN, 101.2PO, 101.2PP, 101.2PQ, 101.2PR, 101.2PS, 101.2PT, 101.2PU, 101.2PV, 101.2PW, 101.2PX, 101.2PY, 101.2PZ, 101.2QA, 101.2QB, 101.2QC, 101.2QD, 101.2QE, 101.2QF, 101.2QG, 101.2QH, 101.2QI, 101.2QJ, 101.2QK, 101.2QL, 101.2QM, 101.2QN, 101.2QO, 101.2QP, 101.2QQ, 101.2QR, 101.2QS, 101.2QT, 101.2QU, 101.2QV, 101.2QW, 101.2QX, 101.2QY, 101.2QZ, 101.2RA, 101.2RB, 101.2RC, 101.2RD, 101.2RE, 101.2RF, 101.2RG, 101.2RH, 101.2RI, 101.2RJ, 101.2RK, 101.2RL, 101.2RM, 101.2RN, 101.2RO, 101.2RP, 101.2RQ, 101.2RR, 101.2RS, 101.2RT, 101.2RU, 101.2RV, 101.2RW, 101.2RX, 101.2RY, 101.2RZ, 101.2SA, 101.2SB, 101.2SC, 101.2SD, 101.2SE, 101.2SF, 101.2SG, 101.2SH, 101.2SI, 101.2SJ, 101.2SK, 101.2SL, 101.2SM, 101.2SN, 101.2SO, 101.2SP, 101.2SQ, 101.2SR, 101.2SS, 101.2ST, 101.2SU, 101.2SV, 101.2SW, 101.2SX, 101.2SY, 101.2SZ, 101.2TA, 101.2TB, 101.2TC, 101.2TD, 101.2TE, 101.2TF, 101.2TG, 101.2TH, 101.2TI, 101.2TJ, 101.2TK, 101.2TL, 101.2TM, 101.2TN, 101.2TO, 101.2TP, 101.2TQ, 101.2TR, 101.2TS, 101.2TT, 101.2TU, 101.2TV, 101.2TW, 101.2TX, 101.2TY, 101.2TZ, 101.2UA, 101.2UB, 101.2UC, 101.2UD, 101.2UE, 101.2UF, 101.2UG, 101.2UH, 101.2UI, 101.2UJ, 101.2UK, 101.2UL, 101.2UM, 101.2UN, 101.2UO, 101.2UP, 101.2UQ, 101.2UR, 101.2US, 101.2UT, 101.2UU, 101.2UV, 101.2UW, 101.2UX, 101.2UY, 101.2UZ, 101.2VA, 101.2VB, 101.2VC, 101.2VD, 101.2VE, 101.2VF, 101.2VG, 101.2VH, 101.2VI, 101.2VJ, 101.2VK, 101.2VL, 101.2VM, 101.2VN, 101.2VO, 101.2VP, 101.2VQ, 101.2VR, 101.2VS, 101.2VT, 101.2VU, 101.2VV, 101.2VW, 101.2VX, 101.2VY, 101.2VZ, 101.2WA, 101.2WB, 101.2WC, 101.2WD, 101.2WE, 101.2WF, 101.2WG, 101.2WH, 101.2WI, 101.2WJ, 101.2WK, 101.2WL, 101.2WM, 101.2WN, 101.2WO, 101.2WP, 101.2WQ, 101.2WR, 101.2WS, 101.2WT, 101.2WU, 101.2WV, 101.2WW, 101.2WX, 101.2WY, 101.2WZ, 101.2XA, 101.2XB, 101.2XC, 101.2XD, 101.2XE, 101.2XF, 101.2XG, 101.2XH, 101.2XI, 101.2XJ, 101.2XK, 101.2XL, 101.2XM, 101.2XN, 101.2XO, 101.2XP, 101.2XQ, 101.2XR, 101.2XS, 101.2XT, 101.2XU, 101.2XV, 101.2XW, 101.2XX, 101.2XY, 101.2XZ, 101.2YA, 101.2YB, 101.2YC, 101.2YD, 101.2YE, 101.2YF, 101.2YG, 101.2YH, 101.2YI, 101.2YJ, 101.2YK, 101.2YL, 101.2YM, 101.2YN, 101.2YO, 101.2YP, 101.2YQ, 101.2YR, 101.2YS, 101.2YT, 101.2YU, 101.2YV, 101.2YW, 101.2YX, 101.2YY, 101.2YZ, 101.2ZA, 101.2ZB, 101.2ZC, 101.2ZD, 101.2ZE, 101.2ZF, 101.2ZG, 101.2ZH, 101.2ZI, 101.2ZJ, 101.2ZK, 101.2ZL, 101.2ZM, 101.2ZN, 101.2ZO, 101.2ZP, 101.2ZQ, 101.2ZR, 101.2ZS, 101.2ZT, 101.2ZU, 101.2ZV, 101.2ZW, 101.2ZX, 101.2ZY, 101.2ZZ



Seasonal Designations

Route Number	Legend	Special Vehicle Designation	Dates Allowed	Beginning Mile Post	Ending Mile Post
5001	Trail Labels in Italic	Seasonal Designation	06/15-10/30	Entire	Length

Seasonal Designations

Roads open to all Vehicles, with Seasonal Designation

Route Number	Dates Allowed	Beginning Mile Post	Ending Mile Post
103	07/02-10/31	1.920	8.290
103.1B, 103.1D, 103.2C, 103.2D	07/02-10/31	Entire	Length
111.1B, 111.1H, 111.2B, 129.1F, 129.1K, 130.3B	05/01-11/14	Entire	Length
129	05/01-11/14	4.190	5.600
130	05/01-11/14	0.000	0.610
208	05/01-11/14	4.730	5.200
208.1F	05/01-11/14	1.720	2.300
208.2P, 208.3P, 211.1A, 211.1D, 211.1E, 211.1F, 211.1G, 242.2B, 242.2C, 242.2D, 242.3C, 244.1A, 244.1B, 244.1C, 289, 290, 291	05/01-11/14	Entire	Length
229.4G	05/01-11/14	0.060	0.290
242	05/01-11/14	2.670	3.020
242.2B	05/01-11/14	0.540	1.400
244	05/01-11/14	0.000	0.110
244	05/01-11/14	1.030	2.010
292	05/01-11/14	0.000	0.330
292.1C	05/01-11/14	0.000	0.058
292.1I	05/01-11/14	0.000	0.110
311A, 311AB, 311AC, 329.1A, 329.1B, 423, 492.1A, 492.2A, 492.2B, 492.3A, 492.3B, 494, 495	05/01-11/14	Entire	Length
311AA	05/01-11/14	0.000	0.060
336	07/16-10/31	6.230	8.790
3417	05/01-11/14	0.980	1.700
396, 396A	07/16-10/31	Entire	Length
502	05/01-11/14	1.290	3.100
502.1C, 502.1D, 502.1E, 502.1F, 502.2F, 502.3F, 502.4F, 502.5F, 512.1H, 512.1K, 512.1L, 512.1M, 512.1N, 512.1O, 512.1P, 512.1Q, 512.1R, 512.1S, 512.1T, 512.1U, 512.1V, 512.1W, 512.1X, 512.1Y, 512.1Z, 512.1AA, 512.1AB, 512.1AC, 512.1AD, 512.1AE, 512.1AF, 512.1AG, 512.1AH, 512.1AI, 512.1AJ, 512.1AK, 512.1AL, 512.1AM, 512.1AN, 512.1AO, 512.1AP, 512.1AQ, 512.1AR, 512.1AS, 512.1AT, 512.1AU, 512.1AV, 512.1AW, 512.1AX, 512.1AY, 512.1AZ, 512.1BA, 512.1BB, 512.1BC, 512.1BD, 512.1BE, 512.1BF, 512.1BG, 512.1BH, 512.1BI, 512.1BJ, 512.1BK, 512.1BL, 512.1BM, 512.1BN, 512.1BO, 512.1BP, 512.1BQ, 512.1BR, 512.1BS, 512.1BT, 512.1BU, 512.1BV, 512.1BW, 512.1BX, 512.1BY, 512.1BZ, 512.1CA, 512.1CB, 512.1CC, 512.1CD, 512.1CE, 512.1CF, 512.1CG, 512.1CH, 512.1CI, 512.1CJ, 512.1CK, 512.1CL, 512.1CM, 512.1CN, 512.1CO, 512.1CP, 512.1CQ, 512.1CR, 512.1CS, 512.1CT, 512.1CU, 512.1CV, 512.1CW, 512.1CX, 512.1CY, 512.1CZ, 512.1DA, 512.1DB, 512.1DC, 512.1DD, 512.1DE, 512.1DF, 512.1DG, 512.1DH, 512.1DI, 512.1DJ, 512.1DK, 512.1DL, 512.1DM, 512.1DN, 512.1DO, 512.1DP, 512.1DQ, 512.1DR, 512.1DS, 512.1DT, 512.1DU, 512.1DV, 512.1DW, 512.1DX, 512.1DY, 512.1DZ, 512.1EA, 512.1EB, 512.1EC, 512.1ED, 512.1EE, 512.1EF, 512.1EG, 512.1EH, 512.1EI, 512.1EJ, 512.1EK, 512.1EL, 512.1EM, 512.1EN, 512.1EO, 512.1EP, 512.1EQ, 512.1ER, 512.1ES, 512.1ET, 512.1EU, 512.1EV, 512.1EW, 512.1EX, 512.1EY, 512.1EZ, 512.1FA, 512.1FB, 512.1FC, 512.1FD, 512.1FE, 512.1FG, 512.1FH, 512.1FI, 512.1FJ, 512.1FK, 512.1FL, 512.1FM, 512.1FN, 512.1FO, 512.1FP, 512.1FQ, 512.1FR, 512.1FS, 512.1FT, 512.1FU, 512.1FV, 512.1FW, 512.1FX, 512.1FY, 512.1FZ, 512.1GA, 512.1GB, 512.1GC, 512.1GD, 512.1GE, 512.1GF, 512.1GG, 512.1GH, 512.1GI, 512.1GJ, 512.1GK, 512.1GL, 512.1GM, 512.1GN, 512.1GO, 512.1GP, 512.1GQ, 512.1GR, 512.1GS, 512.1GT, 512.1GU, 512.1GV, 512.1GW, 512.1GX, 512.1GY, 512.1GZ, 512.1HA, 512.1HB, 512.1HC, 512.1HD, 512.1HE, 512.1HF, 512.1HG, 512.1HH, 512.1HI, 512.1HJ, 512.1HK, 512.1HL, 512.1HM, 512.1HN, 512.1HO, 512.1HP, 512.1HQ, 512.1HR, 512.1HS, 512.1HT, 512.1HU, 512.1HV, 512.1HW, 512.1HX, 512.1HY, 512.1HZ, 512.1IA, 512.1IB, 512.1IC, 512.1ID, 512.1IE, 512.1IF, 512.1IG, 512.1IH, 512.1II, 512.1IJ, 512.1IK, 512.1IL, 512.1IM, 512.1IN, 512.1IO, 512.1IP, 512.1IQ, 512.1IR, 512.1IS, 512.1IT, 512.1IU, 512.1IV, 512.1IW, 512.1IX, 512.1IY, 512.1IZ, 512.1JA, 512.1JB, 512.1JC, 512.1JD, 512.1JE, 512.1JF, 512.1JG, 512.1JH, 512.1JI, 512.1JJ, 512.1JK, 512.1JL, 512.1JM, 512.1JN, 512.1JO, 512.1JP, 512.1JQ, 512.1JR, 512.1JS, 512.1JT, 512.1JU, 512.1JV, 512.1JW, 512.1JX, 512.1JY, 512.1JZ, 512.1KA, 512.1KB, 512.1KC, 512.1KD, 512.1KE, 512.1KF, 512.1KG, 512.1KH, 512.1KI, 512.1KJ, 512.1KK, 512.1KL, 512.1KM, 512.1KN, 512.1KO, 512.1KP, 512.1KQ, 512.1KR, 512.1KS, 512.1KT, 512.1KU, 512.1KV, 512.1KW, 512.1KX, 512.1KY, 512.1KZ, 512.1LA, 512.1LB, 512.1LC, 512.1LD, 512.1LE, 512.1LF, 512.1LG, 512.1LH, 512.1LI, 512.1LJ, 512.1LK, 512.1LM, 512.1LN, 512.1LO, 512.1LP, 512.1LQ, 512.1LR, 512.1LS, 512.1LT, 512.1LU, 512.1LV, 512.1LW, 512.1LX, 512.1LY, 512.1LZ, 512.1MA, 512.1MB, 512.1MC, 512.1MD, 512.1ME, 512.1MF, 512.1MG, 512.1MH, 512.1MI, 512.1MJ, 512.1MK, 512.1ML, 512.1MN, 512.1MO, 512.1MP, 512.1MQ, 512.1MR, 512.1MS, 512.1MT, 512.1MU, 512.1MV, 512.1MW, 512.1MX, 512.1MY, 512.1MZ, 512.1NA, 512.1NB, 512.1NC, 512.1ND, 512.1NE, 512.1NF, 512.1NG, 512.1NH, 512.1NI, 512.1NJ, 512.1NK, 512.1NL, 512.1NM, 512.1NO, 512.1NP, 512.1NQ, 512.1NR, 512.1NS, 512.1NT, 512.1NU, 512.1NV, 512.1NW, 512.1NX, 512.1NY, 512.1NZ, 512.1OA, 512.1OB, 512.1OC, 512.1OD, 512.1OE, 512.1OF, 512.1OG, 512.1OH, 512.1OI, 512.1OJ, 512.1OK, 512.1OL, 512.1OM, 512.1ON, 512.1OO, 512.1OP, 512.1OQ, 512.1OR, 512.1OS, 512.1OT, 512.1OU, 512.1OV, 512.1OW, 512.1OX, 512.1OY, 512.1OZ, 512.1PA, 512.1PB, 512.1PC, 512.1PD, 512.1PE, 512.1PF, 512.1PG, 512.1PH, 512.1PI, 512.1PJ, 512.1PK, 512.1PL, 512.1PM, 512.1PN, 512.1PO, 512.1PP, 512.1PQ, 512.1PR, 512.1PS, 512.1PT, 512.1PU, 512.1PV, 512.1PW, 512.1PX, 512.1PY, 512.1PZ, 512.1QA, 512.1QB, 512.1QC, 512.1QD, 512.1QE, 512.1QF, 512.1QG, 512.1QH, 512.1QI, 512.1QJ, 512.1QK, 512.1QL, 512.1QM, 512.1QN, 512.1QO, 512.1QP, 512.1QQ, 512.1QR, 512.1QS, 512.1QT, 512.1QU, 512.1QV, 512.1QW, 512.1QX, 512.1QY, 512.1QZ, 512.1RA, 512.1RB, 512.1RC, 512.1RD, 512.1RE, 512.1RF, 512.1RG, 512.1RH, 512.1RI, 512.1RJ, 512.1RK, 512.1RL, 512.1RM, 512.1RN, 512.1RO, 512.1RP, 512.1RQ, 512.1RR, 512.1RS, 512.1RT, 512.1RU, 512.1RV, 512.1RW, 512.1RX, 512.1RY, 512.1RZ, 512.1SA, 512.1SB, 512.1SC, 512.1SD, 512.1SE, 512.1SF, 512.1SG, 512.1SH, 512.1SI, 512.1SJ, 512.1SK, 512.1SL, 512.1SM, 512.1SN, 512.1SO, 512.1SP, 512.1SQ, 512.1SR, 512.1SS, 512.1ST, 512.1SU, 512.1SV, 512.1SW, 512.1SX, 512.1SY, 512.1SZ, 512.1TA, 512.1TB, 512.1TC, 512.1TD, 512.1TE, 512.1TF, 512.1TG, 512.1TH, 512.1TI, 512.1TJ, 512.1TK, 512.1TL, 512.1TM, 512.1TN, 512.1TO, 512.1TP, 512.1TQ, 512.1TR, 512.1TS, 512.1TT, 512.1TU, 512.1TV, 512.1TW, 512.1TX, 512.1TY, 512.1TZ, 512.1UA, 512.1UB, 512.1UC, 512.1UD, 512.1UE, 512.1UF, 512.1UG, 512.1UH, 512.1UI, 512.1UJ, 512.1UK, 512.1UL, 512.1UM, 512.1UN, 512.1UO, 512.1UP, 512.1UQ, 512.1UR, 512.1US, 512.1UT, 512.1UU, 512.1UV, 512.1UW, 512.1UX, 512.1UY, 512.1UZ, 512.1VA, 512.1VB, 512.1VC, 512.1VD, 512.1VE, 512.1VF, 512.1VG, 512.1VH, 512.1VI, 512.1VJ, 512.1VK, 512.1VL, 512.1VM, 512.1VN, 512.1VO, 512.1VP, 512.1VQ, 512.1VR, 512.1VS, 512.1VT, 512.1VU, 512.1VV, 512.1VW, 512.1VX, 512.1VY, 512.1VZ, 512.1WA, 512.1WB, 512.1WC, 512.1WD, 512.1WE, 512.1WF, 512.1WG, 512.1WH, 512.1WI, 512.1WJ, 512.1WK, 512.1WL, 512.1WM, 512.1WN, 512.1WO, 512.1WP, 512.1WQ, 512.1WR, 512.1WS, 512.1WT, 512.1WU, 512.1WV, 512.1WW, 512.1WX, 512.1WY, 512.1WZ, 512.1XA, 512.1XB, 512.1XC, 512.1XD, 512.1XE, 512.1XF, 512.1XG, 512.1XH, 512.1XI, 512.1XJ, 512.1XK, 512.1XL, 512.1XM, 512.1XN, 512.1XO, 512.1XP, 512.1XQ, 512.1XR, 512.1XS, 512.1XT, 512.1XU, 512.1XV, 512.1XW, 512.1XX, 512.1XY, 512.1XZ, 512.1YA, 512.1YB, 512.1YC, 512.1YD, 512.1YE, 512.1YF, 512.1YG, 512.1YH, 512.1YI, 512.1YJ, 512.1YK, 512.1YL, 512.1YM, 512.1YN, 512.1YO, 512.1YP, 512.1YQ, 512.1YR, 512.1YS, 512.1YT, 512.1YU, 512.1YV, 512.1YW, 512.1YX, 512.1YY, 512.1YZ, 512.1ZA, 512.1ZB, 512.1ZC, 512.1ZD, 512.1ZE, 512.1ZF, 512.1ZG, 512.1ZH, 512.1ZI, 512.1ZJ, 512.1ZK, 512.1ZL, 512.1ZM, 512.1ZN, 512.1ZO, 512.1ZP, 512.1ZQ, 512.1ZR, 512.1ZS, 512.1ZT, 512.1ZU, 512.1ZV, 512.1ZW, 512.1ZX, 512.1ZY, 512.1ZZ	05/01-11/14	5.560	8.340
533	05/01-11/14	2.290	4.400
535	05/01-11/14	2.500	4.250
538	05/01-11/14	2.440	4.300
540.B	05/01-11/14	1.120	2.200
552.B	05/01-11/14	0.830	1.950