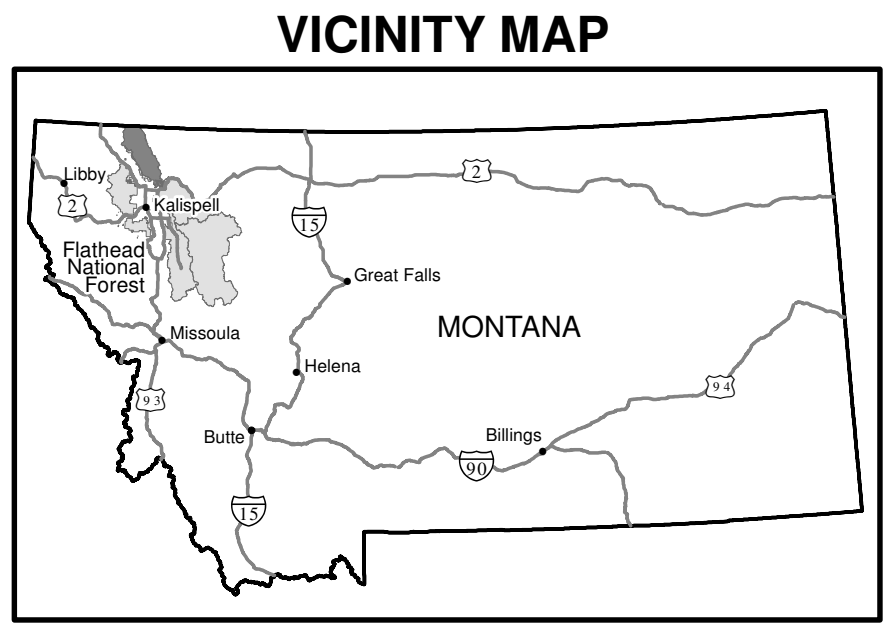


United States Department of Agriculture  
Forest Service  
MONTANA  
MAY 2013

FLATHEAD NATIONAL FOREST  
GLACIER VIEW  
RANGER DISTRICT  
Motor Vehicle  
Use Map



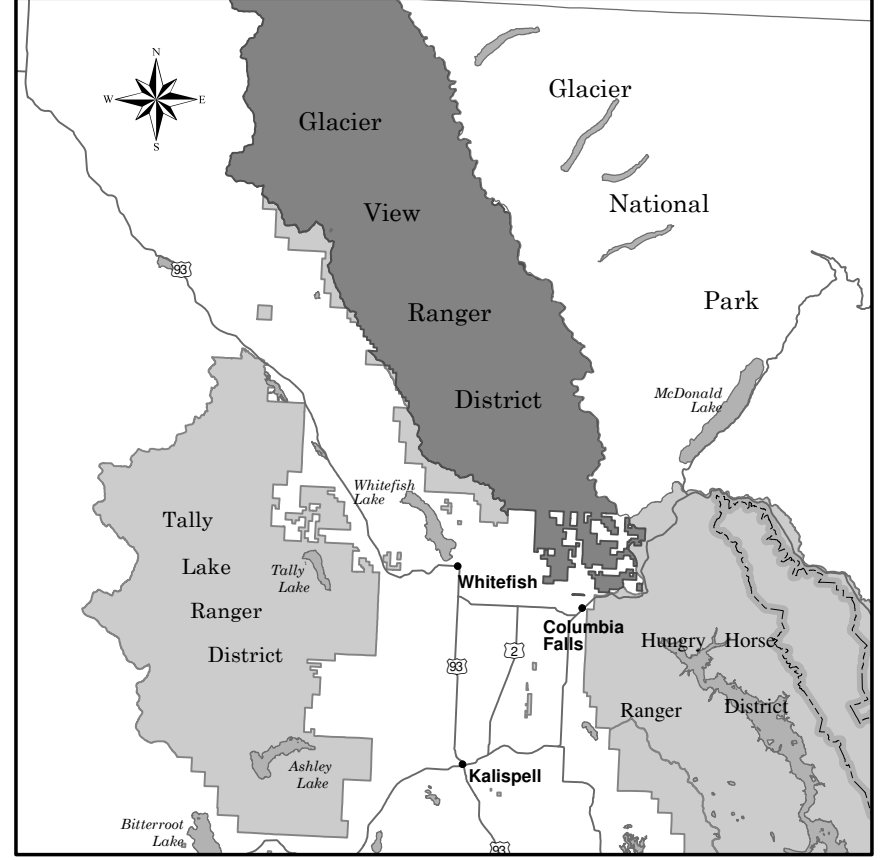
INFORMATION SOURCES

FOREST SUPERVISOR'S OFFICE

650 Wolfpack Way  
Kalispell, MT 59901  
(406) 758-5208  
www.fs.fed.us/r1/flathead

GLACIER VIEW RANGER DISTRICT

10 Hungry Horse Drive  
Hungry Horse, MT 59919  
(406) 387-3800

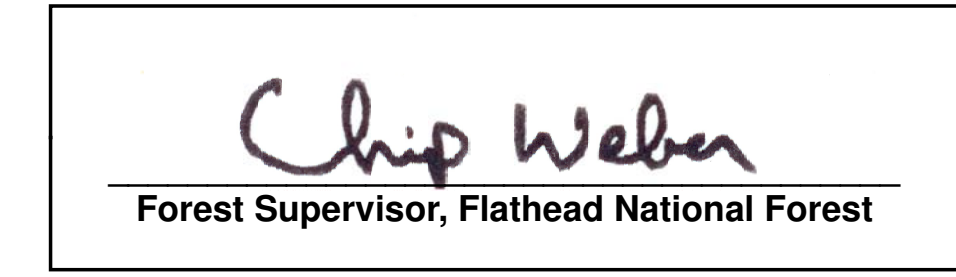


- Travel and recreate with minimum impact.
- Respect the environment and the rights of others.
- Educate yourself plan and prepare before you go.
- Allow for future use of the outdoors by leaving it better than you found it.
- Discover the rewards of responsible recreation.

The U.S. Department of Agriculture (USDA) prohibits discrimination in all its programs and activities on the basis of race, color, national origin, age, disability, and where applicable, sex, marital status, familial status, parental status, religion, sexual orientation, genetic information, political beliefs, reprisal, or because all or part of an individual's income is derived from any public assistance program. (Not all prohibited bases apply to all programs.) Persons with disabilities who require alternative means for communication of program information (Braille, large print, audiotape, etc.) should contact USDA's TARGET Center at (202) 720-2600 (voice and TDD). To file a complaint of discrimination, write to USDA, Director, Office of Civil Rights, 1400 Independence Avenue, S.W., Washington, D.C. 20250-9410, or call (800) 725-3272 (voice) or (202) 720-6382 (TDD). USDA is an equal opportunity provider and employer.

## PURPOSE AND CONTENTS OF THIS MAP

The designations shown on this motor vehicle use map (MVUM) were made by the responsible official pursuant to 36 CFR 212.51; are effective as of the date on the front cover of this MVUM; and will remain in effect until superseded by next year's MVUM.



It is the responsibility of the user to acquire the current MVUM. This MVUM shows the National Forest System roads, National Forest System trails, and the areas on National Forest System lands in the Glacier View Ranger District that are designated for motor vehicle use pursuant to 36 CFR 212.51. This MVUM also identifies the vehicle classes allowed on each route and in each area, and any seasonal restrictions that apply on those routes and in those areas.

Designation of a road, trail, or area for motor vehicle use by a particular class of vehicle under 36 CFR 212.51 should not be interpreted as encouraging or inviting use or implying that the road, trail, or area is passable, actively maintained, or safe for travel. Motor vehicle designations include parking along designated routes and at facilities associated with designated routes when it is safe to do so and when not causing damage to National Forest System resources. Seasonal weather conditions and natural events may render designated roads and trails impassable for extended periods. Designated areas may contain dangerous or impassable terrain. Many designated roads and trails may be passable only by high-clearance vehicles or four-wheel-drive vehicles. Maintenance of designated roads and trails will depend on available resources, and many may receive little maintenance.

This motor vehicle use map identifies those roads, trails, and areas designated for the motor vehicle use under 36 CFR 212.51 for the purpose of enforcing the prohibition at 36 CFR 261.13. This is a limited purpose. The other public roads are shown for information and navigation purposes only and are not subject to designation under the Forest Service travel management regulation.

## PROHIBITIONS

**It is prohibited to possess or operate a motor vehicle on National Forest System lands on the Glacier View Ranger District, other than in accordance with these designations (CFR 261.13)**

Violators of 36 CFR 261.13 are subject to a fine of up to \$5,000, imprisonment for up to 6 months, or both (18 U.S.C. 3571 (e)). This prohibition applies regardless of the presence or absence of signs.

This map does not display nonmotorized uses, over-snow uses, or other facilities and attractions on the Glacier View Ranger District. Obtain forest visitor information from the local Forest Service office.

Designated roads, trails and areas may also be subject to temporary, emergency closures. As a visitor, you must comply with signs notifying you of such restrictions. A national forest may issue an order to close a road, trail or area on a temporary basis to protect the life, health, or safety of forest visitors or the natural or cultural resources in these areas. Such a temporary and/or emergency closures are consistent with the Travel Management Rule (36 CFR 212.52 (b), 36 CFR 261 subpart B).

The designation "road or trail open to all motor vehicles" does not supersede State traffic law.



## OPERATOR RESPONSIBILITIES

Operating a motor vehicle on National Forest System roads, National Forest System trails, and in areas on National Forest System lands carries a greater responsibility than operating that vehicle in a city or other developed setting. Not only must you know and follow all applicable traffic laws, you need to show concern for the environment as well as other forest users. The misuse of motor vehicles can lead to the temporary or permanent closure of any designated road, trail, or area. As a motor vehicle operator, you are also subject to State traffic law, including State requirements for licensing, registration, and operation of the vehicle in question.

Motor vehicle use, especially off-highway vehicle use, involves inherent risks that may cause property damage, serious injury, and possibly death to participants. Drive cautiously and anticipate rough surfaces and features, such as snow, mud, vegetation, and water crossings common to remote driving conditions. By your participation, you voluntarily assume full responsibility for these dangers, risks, and dangers. Take care at all times to protect yourself and those under your responsibility.

Much of the Glacier View Ranger District is remote. Medical assistance may not be readily available. Cell phones do not work in many areas of the Glacier View Ranger District. Take adequate food, water, first-aid supplies, and other equipment appropriate for the conditions and expected weather.

**ALWAYS REMEMBER TO RESPECT PRIVATE LAND! PROTECT YOUR PRIVILEGE. STAY ON DESIGNATED ROADS AND TRAILS AND IN DESIGNATED AREAS.**

Read and understand this map in its entirety. If you have questions, please contact the Glacier View Ranger District for clarification.

As a motor vehicle operator on a National Forest System road, trail, or area you must comply with this map, as well as all Federal, State, and local laws and regulations. Compliance with these rules is your responsibility.

**Legend**

- Roads Open to Highway Legal Vehicles
- Trails Open to vehicles 50" or less
- Trails Open to Motorcycles Only
- Special Vehicle Designation (See Table)
- Seasonal Designation (See Table)
- Dispersed Camping
- Highways, US, State
- Other Public Roads
- Areas Open to Cross-Country Travel
- FS Campground
- Milepost Marker
- Peaks
- Forest or Unit Boundary
- National Forest System Lands
- Non-National Forest System Lands within the National Forest
- National Wild, Scenic or Recreation River Boundary
- Township and Range Lines
- Section Lines
- Lakes and Rivers

0 0.5 1 2 3 4 Miles

N

## EXPLANATION OF LEGEND ITEMS

Roads Open to Highway Legal Vehicles Only:

These roads are open only to motor vehicles licensed under State law for general operation on all public roads within the State.

Trails Open to Vehicles 50 inches or Less in Width:

Trails open only to motor vehicles less than 50 inches in width at the widest point on the vehicle.

Trails Open to Motorcycles Only:

These trails are open only to motorcycles. Sidecars are not permitted.

Special Vehicle Designation:

This symbol indicates the road or trail is open to classes of vehicles other than those listed above. Refer to the Seasonal and Special Designation Table for further instructions.

Seasonal Designation:

This symbol, used in conjunction with one of the other road or trail symbols, indicates that the road or trail is open only during certain portions of the year. Refer to Seasonal and Special Designation Table for further instructions.

Dispersed Camping:

- Dispersed Camping, Both Sides
- Dispersed Camping, Left Side
- Dispersed Camping, Right Side

This symbol is used along with a designated road or trail to indicate limited cross-country motor vehicle use within a specific distance of that route, solely for the purpose of dispersed camping. The dots indicate where this activity is permitted. They may be on the left, right, or both sides of the route.

Other Public Roads and Trails:

- Interstate
- Highways, U.S., State
- Other Public Roads
- Other Public Trails

These symbols are used to show routes the Forest Service does not have jurisdiction over and has not designated for motorized use. These symbols are part of the reference layers showing connections to towns and cities outside the forest boundary.

Areas Open to Cross Country Travel:



These are areas on National Forest System land that allow cross-country travel by motorized vehicles. Specific vehicle classes and seasonal designations may be indicated in the Seasonal and Special Designation Table.

Milepost Marker:

This symbol is used to display the beginning and ending mileposts of a road that has a change in the designation but not the symbol.

## DISPERSED CAMPING

-Motorized access to a dispersed campsite is prohibited within the designated Wild and Scenic Corridors of the Middle and North Forks of the Flathead Rivers. (CFR 261.15)

-Campsite selection must be completed by nonmotorized means, and then accessed by the most direct route (no more than 300 feet) without causing resource damage. (CFR 261.15)

-Cutting, damaging, or harming (such as driving over) trees or vegetation is not allowed to access dispersed camping spots. (CFR 261.15)

-Moving, going around, going over, or going past barriers on roads (i.e., gates, rocks, berms, barriers, signs, etc.) is not allowed. (CFRs 261.12, 261.14)

-In all developed recreation sites, such as developed campgrounds, picnic sites, trailheads, boat launches, etc., motor vehicle access is restricted to designated roads and parking sites only. Access off these roads is not allowed to access dispersed campsites. (CFR 261.16)

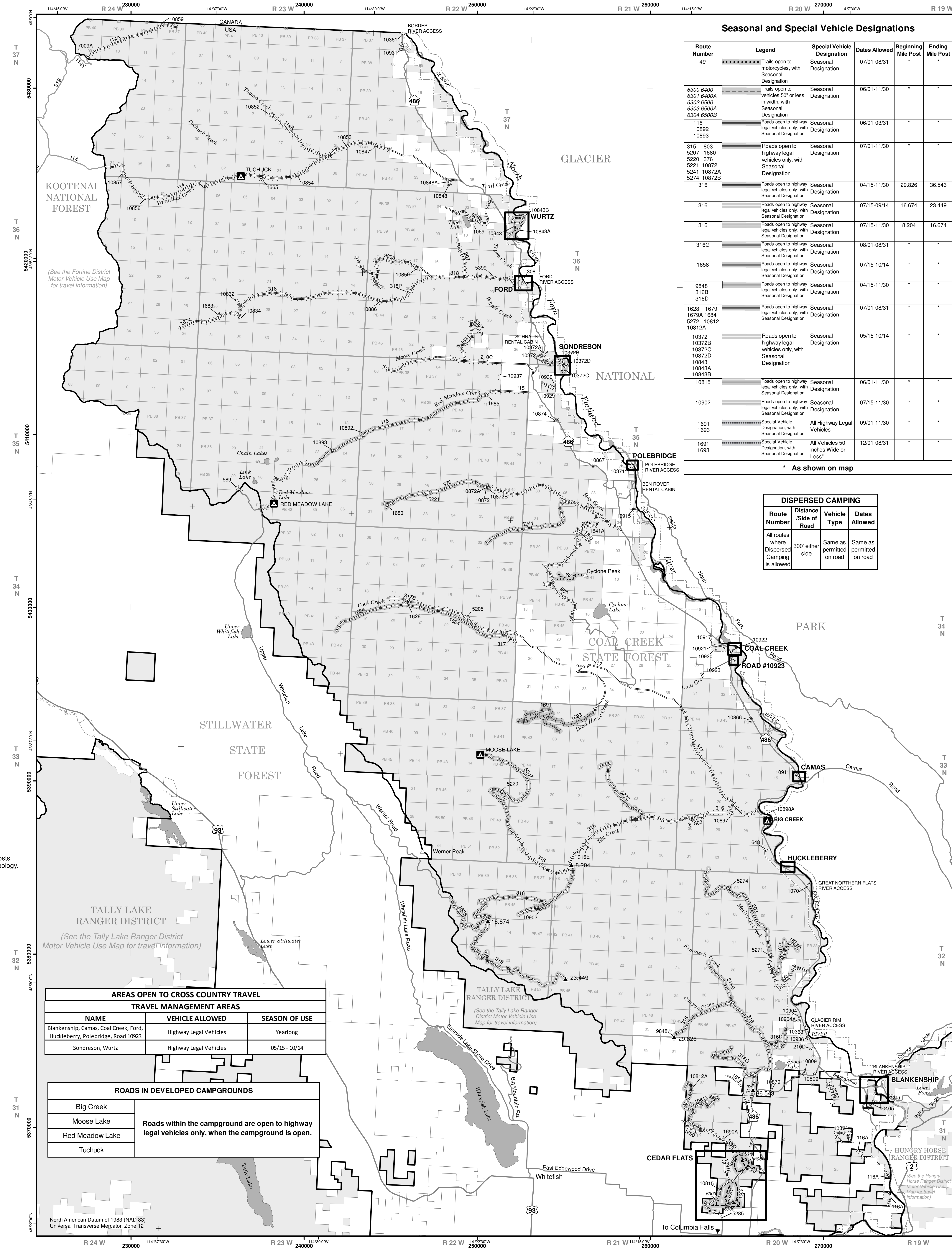
## CROSS COUNTRY AREAS

Motorized travel is designated to specific cross country areas as depicted on this map and signed at each site.

Motorized access below the high-water line: cross country areas leading to the Hungry Horse Reservoir or the Middle, North, or South Forks of the Flathead River's edge are intended to allow highway legal motorized access to the shoreline. The area depicted on MVUM will fluctuate depending on the river or reservoir levels.

Wild and Scenic River Corridor: the cross country areas located within the Wild and Scenic River Corridor above the high-water line allow for highway legal access within those specific areas.

It is prohibited to operate any vehicle off National Forest System, State or County roads: In a manner which damages or unreasonably disturbs the land, wildlife, or vegetative resources (CFR 261.15 (h))



## Seasonal and Special Vehicle Designations

Route Number	Legend	Special Vehicle Designation	Dates Allowed	Beginning Mile Post	Ending Mile Post
40	Trails open to motorcycles, with Seasonal Designation	Seasonal Designation	07/01-08/31	*	*
6300 6400 6301 6400A 6302 6500 6303 6500A 6304 6500B	Trails open to vehicles 50" or less in width, with Seasonal Designation	Seasonal Designation	06/01-11/30	*	*
115 10892 10893	Roads open to highway legal vehicles only, with Seasonal Designation	Seasonal Designation	06/01-03/31	*	*
315 803 5207 1680 5220 576 5221 10872 5241 10872A 5274 10872B	Roads open to highway legal vehicles only, with Seasonal Designation	Seasonal Designation	07/01-11/30	*	*
316	Roads open to highway legal vehicles only, with Seasonal Designation	Seasonal Designation	04/15-11/30	29.826	36.543
316	Roads open to highway legal vehicles only, with Seasonal Designation	Seasonal Designation	07/15-09/14	16.674	23.449
316	Roads open to highway legal vehicles only, with Seasonal Designation	Seasonal Designation	07/15-11/30	8.204	16.674
316G	Roads open to highway legal vehicles only, with Seasonal Designation	Seasonal Designation	08/01-08/31	*	*
1658	Roads open to highway legal vehicles only, with Seasonal Designation	Seasonal Designation	07/15-10/14	*	*
9848 316B 316D	Roads open to highway legal vehicles only, with Seasonal Designation	Seasonal Designation	04/15-11/30	*	*
1628 1679 1679A 1684 5272 10812 10812A	Roads open to highway legal vehicles only, with Seasonal Designation	Seasonal Designation	07/01-08/31	*	*
10372 10372B 10372C 10372D 10843 10843A 10843B	Roads open to highway legal vehicles only, with Seasonal Designation	Seasonal Designation	05/15-10/14	*	*
10815	Roads open to highway legal vehicles only, with Seasonal Designation	Seasonal Designation	06/01-11/30	*	*
10902	Roads open to highway legal vehicles only, with Seasonal Designation	Seasonal Designation	07/15-11/30	*	*
1691 1693	Special Vehicle Designation, with Seasonal Designation	All Highway Legal Vehicles	09/01-11/30	*	*
1691 1693	Special Vehicle Designation, with Seasonal Designation	All Vehicles 50 Inches Wide or Less"	12/01-08/31	*	*

\* As shown on map

DISPERSED CAMPING			
Route Number	Distance /Side of Road	Vehicle Type	Dates Allowed
All routes where Dispersed Camping is allowed	300' either side	Same as permitted on road	Same as permitted on road

