

NASA/CR-2014-218248



Calibration of International Space Station (ISS) Node 1 Vibro-Acoustic Model

*Weiguo Zhang and Ravi Raveendra
Comet Technology Corporation, Ann Arbor, Michigan*

April 2014

NASA STI Program . . . in Profile

Since its founding, NASA has been dedicated to the advancement of aeronautics and space science. The NASA scientific and technical information (STI) program plays a key part in helping NASA maintain this important role.

The NASA STI program operates under the auspices of the Agency Chief Information Officer. It collects, organizes, provides for archiving, and disseminates NASA's STI. The NASA STI program provides access to the NASA Aeronautics and Space Database and its public interface, the NASA Technical Report Server, thus providing one of the largest collections of aeronautical and space science STI in the world. Results are published in both non-NASA channels and by NASA in the NASA STI Report Series, which includes the following report types:

- **TECHNICAL PUBLICATION.** Reports of completed research or a major significant phase of research that present the results of NASA Programs and include extensive data or theoretical analysis. Includes compilations of significant scientific and technical data and information deemed to be of continuing reference value. NASA counterpart of peer-reviewed formal professional papers, but having less stringent limitations on manuscript length and extent of graphic presentations.
- **TECHNICAL MEMORANDUM.** Scientific and technical findings that are preliminary or of specialized interest, e.g., quick release reports, working papers, and bibliographies that contain minimal annotation. Does not contain extensive analysis.
- **CONTRACTOR REPORT.** Scientific and technical findings by NASA-sponsored contractors and grantees.

- **CONFERENCE PUBLICATION.** Collected papers from scientific and technical conferences, symposia, seminars, or other meetings sponsored or co-sponsored by NASA.
- **SPECIAL PUBLICATION.** Scientific, technical, or historical information from NASA programs, projects, and missions, often concerned with subjects having substantial public interest.
- **TECHNICAL TRANSLATION.** English-language translations of foreign scientific and technical material pertinent to NASA's mission.

Specialized services also include organizing and publishing research results, distributing specialized research announcements and feeds, providing information desk and personal search support, and enabling data exchange services.

For more information about the NASA STI program, see the following:

- Access the NASA STI program home page at <http://www.sti.nasa.gov>
- E-mail your question to help@sti.nasa.gov
- Fax your question to the NASA STI Information Desk at 443-757-5803
- Phone the NASA STI Information Desk at 443-757-5802
- Write to:
STI Information Desk
NASA Center for AeroSpace Information
7115 Standard Drive
Hanover, MD 21076-1320

NASA/CR-2014-218248



Calibration of International Space Station (ISS) Node 1 Vibro-Acoustic Model

*Weiguo Zhang and Ravi Raveendra
Comet Technology Corporation, Ann Arbor, Michigan*

National Aeronautics and
Space Administration

Langley Research Center
Hampton, Virginia 23681-2199

Prepared for Langley Research Center
under Contract NNL07AA00C

April 2014

Available from:

NASA Center for AeroSpace Information
7115 Standard Drive
Hanover, MD 21076-1320
443-757-5802

1. 0 Introduction

The objective of the present investigation is to correlate the vibration data measured by NASA using acoustic emission, at specific sensor locations on Node 1 of the International Space Station (ISS), to corresponding values predicted by Comet EnFlow, an analysis software based on Energy Finite Element Method (EFEM) that was developed previously as a result of an SBIR funding from NASA LaRC. The report is arranged as follows: Section 2 provides a brief description of measured data, Section 3 describes the computational model, Section 4 describes the results and brief remarks are provided in the final section.

2.0 Measured Data

The measured data was provided by NASA and a brief description of the data is provided in this section. The Node 1 Model is shown in Figure 1. The vibrations are measured using a series of acoustic emission sensors that have been placed at the locations as shown in Figure 2; Sensor 13 is the source location that corresponds to input excitation at the wall. The coordinates of the sensor location are presented in Table 1.



Figure1. Node 1 Structure

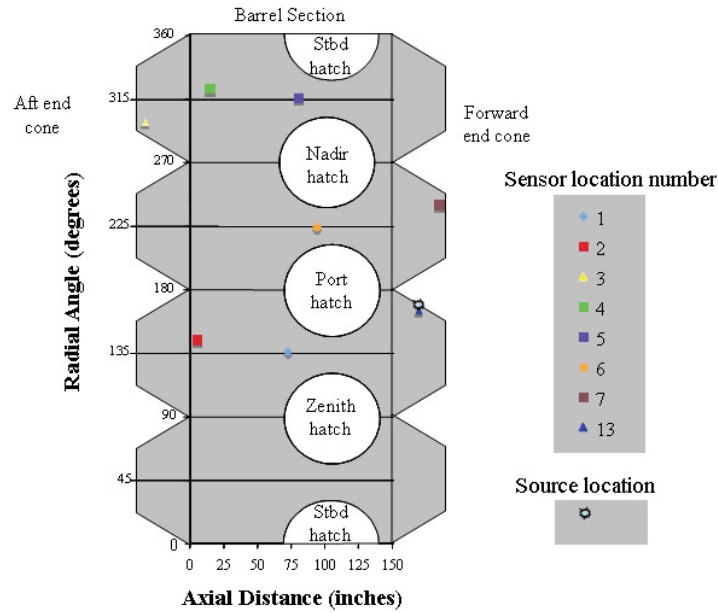


Figure 2. Sensor Locations

R=	80.25	barrel section	ID R=80.25 Starboard hatch centerline = 0°				
					cone section		
Detectors		Axial distance (in) from aft end	Radial (degrees)		Radial distance (in) from cone outer edge	Radial (degrees)	Radial distance (in) from "cone apex"
	1	73	135.71				
	2	5.5	144.15				
	3			Aft cone	43.24	280.5	46.47
	4	14.75	322.19				
	5	81.00	315.85				
	6	94.25	224.15				
	7			Forward cone	42.74	262.2	46.97
	13			Forward cone	20	181	69.71
Source				Forward cone	20	180	69.71

Table 1. Coordinates of Sensor Locations

The B225.5 acoustic emission sensors are utilized for measurement. The averaged power spectra density of the sensor voltage at measurement locations is provided in Figure 3. Note that the data at location 2 is not included since the corresponding receiver channel was not working properly. The most signal energy is between 40 kHz and 160 kHz. The calibration results at these frequencies are plotted in Figure 4. The curve indicates the flat response from 60 kHz to 180 kHz with 57 dB (708 V/ μ m) calibration factor. The flexural velocity at these measurement locations are computed from data from Figure 3 and Figure 4 which are reported in Section 4.0.

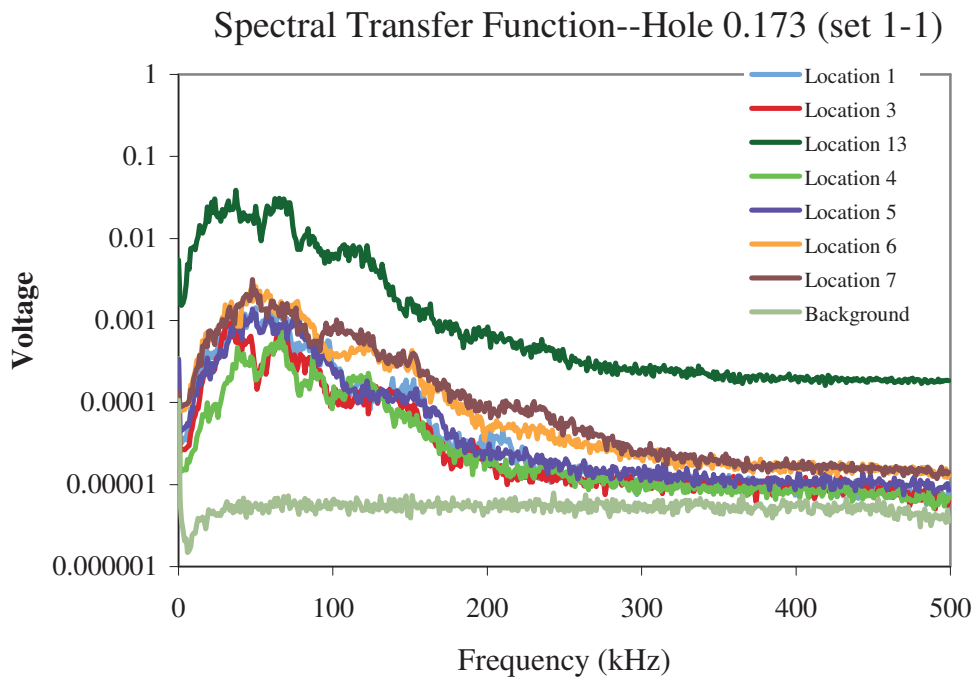


Figure 3. Power Spectra Density of Measurement Data

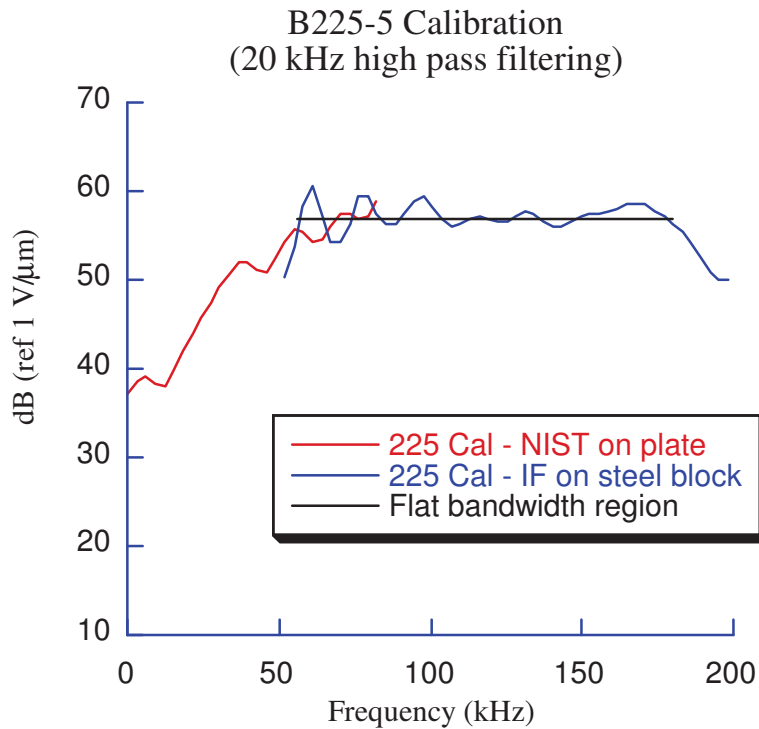


Figure 4. Conversion Factor from Voltage to Displacement

3.0 EFEM Modeling of Node 1 of the Space Station

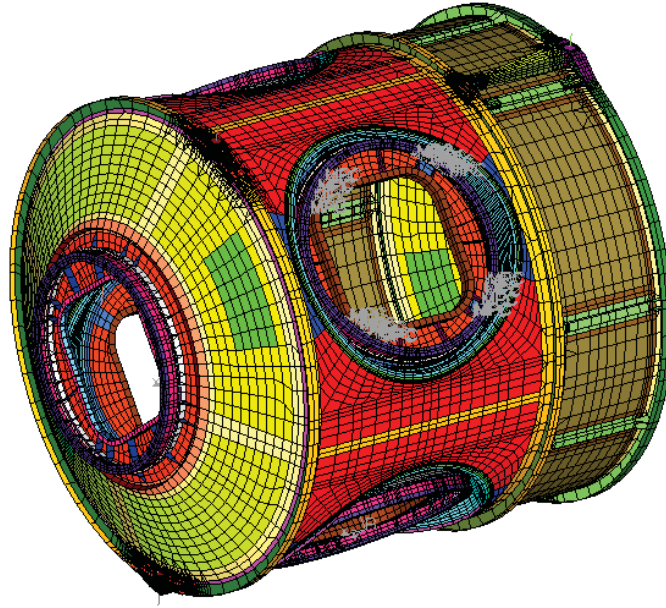


Figure 5. The FEM model of Node 1 for Stress Analysis

A very dense finite element (high fidelity) model of Node 1 (see Figure 5) that was originally created for stress analysis was provided by Boeing. The model also included material and geometry properties except damping coefficients. This model consisted of 61167 elements and 54517 nodes. Comet EnFlow is based on finite element method for high frequency vibroacoustic analysis. In this method, energy density is used as the primary variable. Since the energy density does not vary spatially very much, the mesh density requirements are much less and as a result a low density (intermediate fidelity) finite element model is appropriate. Thus, the original FEM model is coarsened and simplified for EnFlow analysis. Specially, the small parts, such as, clips, small overlap plates etc., are replaced by equivalent plates. In addition, the multiple attachments on the four hatch area and aft and forward end cone have less effect on the wave propagation on the wall of the Node 1. These elements are neglected and the effects are considered via modifying the properties of the supporting plates. Finally, the rigid bar elements are neglected since no vibration energy is transported through them.

The modified finite element model for EnFlow analysis is shown in Figure 6. EFEM requires the generation of joint element at geometric and material discontinuities. The joint elements (see Figure 7) are automatically created the graphical user interface utility of Comet EnFlow. The new model including the joint element is comprised of 11126 elements, 15851 nodes and 3342 joint elements. Note that solutions in vibroacoustic analysis are required at many frequencies. As a result of the reduction of the model, the solution times become reasonable.

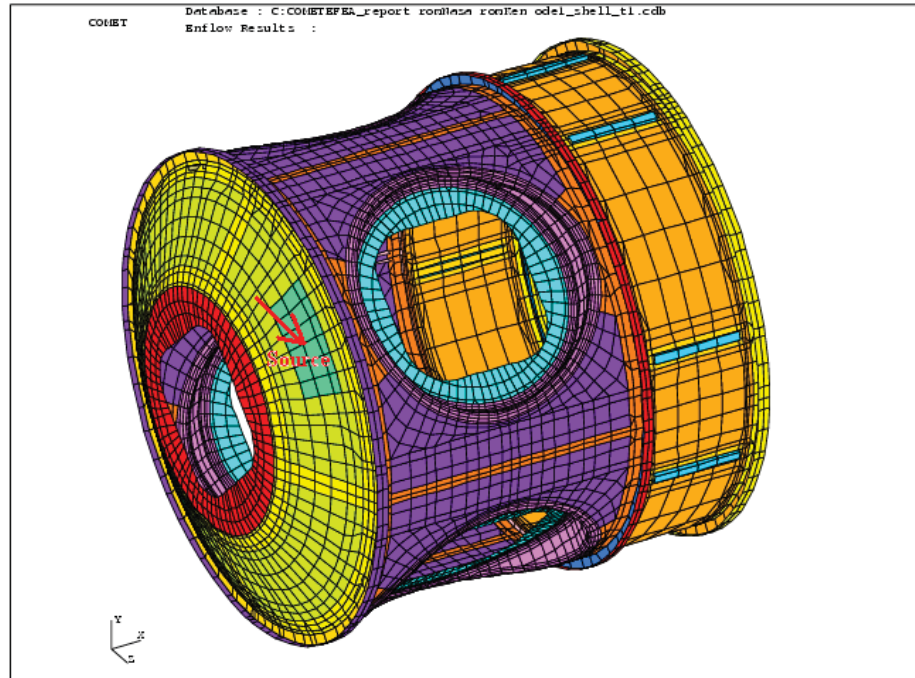


Figure 6. The FEM model of Node 1 for EnFlow Analysis

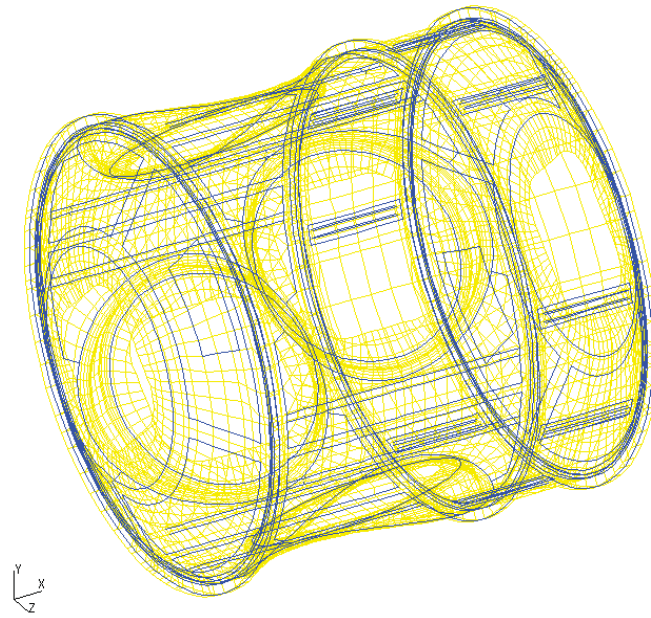


Figure 7. The Joint Location in Node 1 EnFlow Model

4.0 Correlation of Experimental Data to EFEM Predictions

Comet/EnFlow is used to predict the noise distribution due to the wave propagation from the source location (sensor 13). In this study, the noise corresponds to flexural velocity on the wall of Nodal 1.

The flexural velocity at sensor 13 which is close the source location is converted to flexural acceleration and utilized as the excitation on the corresponding node of the EnFlow model. The flexural velocity at center frequency of 1/3 octave band from 40 kHz to 160 kHz is computed. The damping coefficient is linearly distributed over the whole frequency range which is shown in Figure 8.

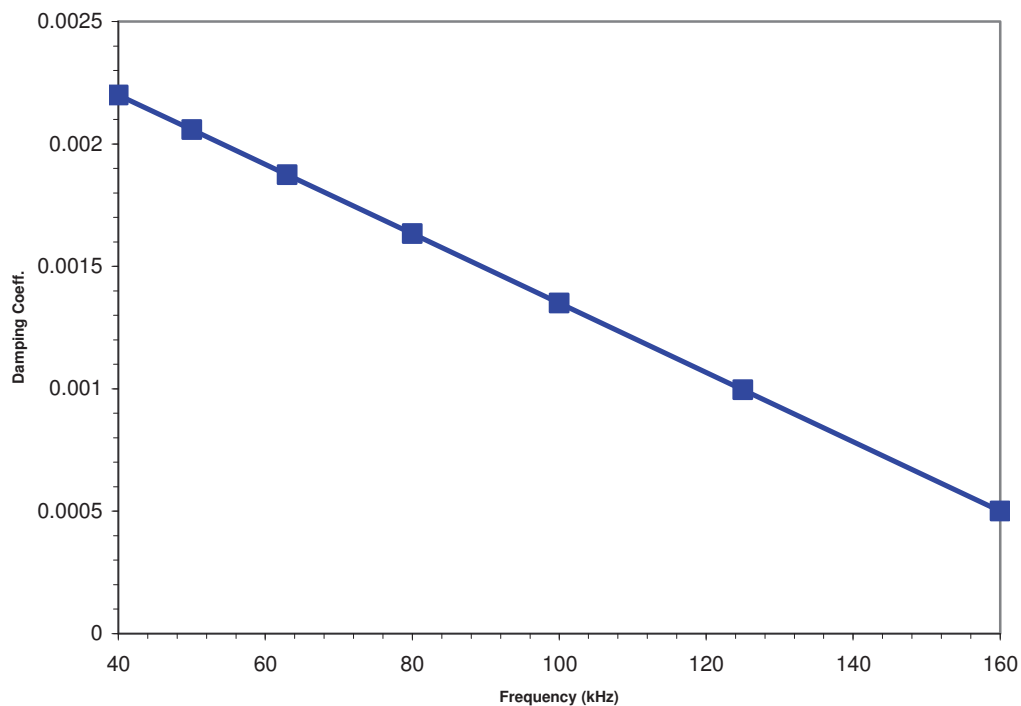


Figure 8. Damping coefficient over the frequency range

The flexural velocity distribution at 40 kHz is shown in Figure 9. It can be observed that the magnitude of the velocity decreases along the distance to the source location. The flexural energy intensity plot over the model in Figure 10 displays how flexural energy propagates on the wall of the model.

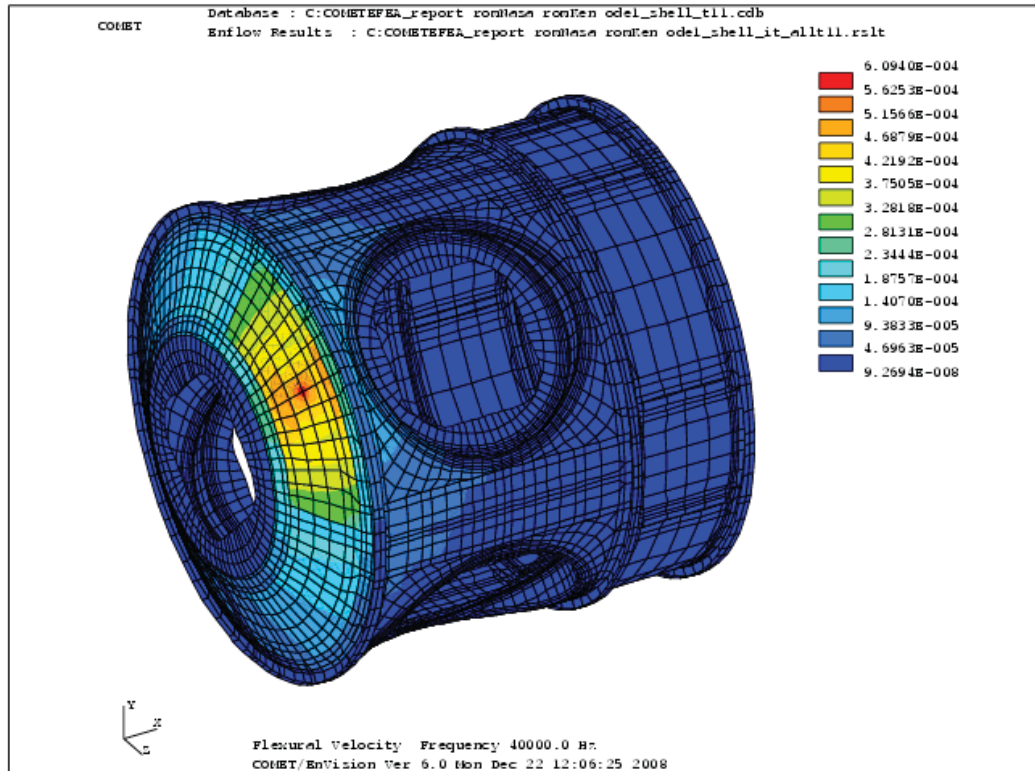


Figure 9. The Flexural Velocity Distribution at 40 kHz

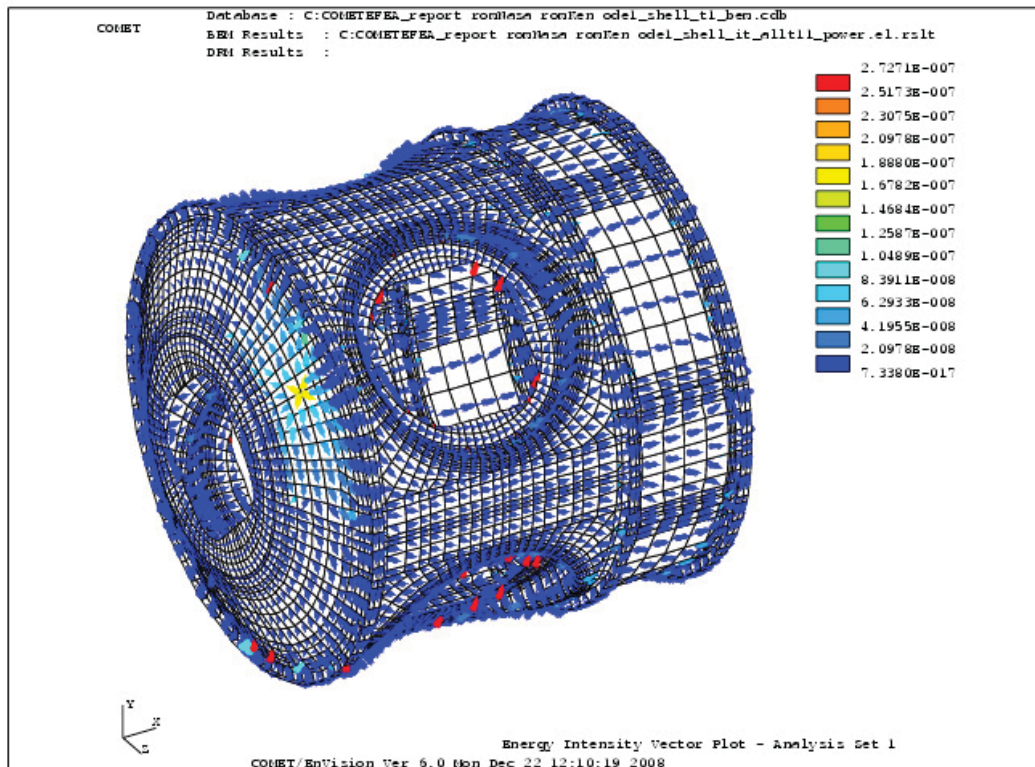


Figure 10. The Flexural Energy Intensity Vector Plot at 40 kHz

The flexural velocities computed by Comet EnFlow at the sensor locations are shown from Figure 11~ Figure 17. These figures are arranged in the sequence of distance from the sensors to the source. The measured flexural velocity at the center frequencies is obtained via averaging over the 1/3 octave band and also plotted in the corresponding Figures.

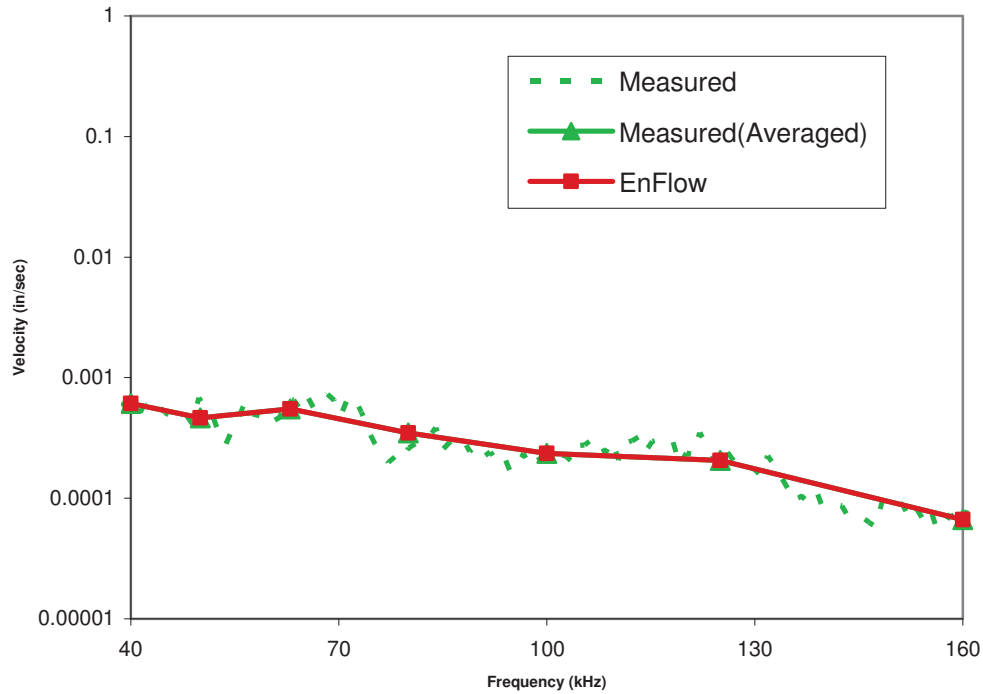


Figure 11. Flexural Velocity of Sensor 13

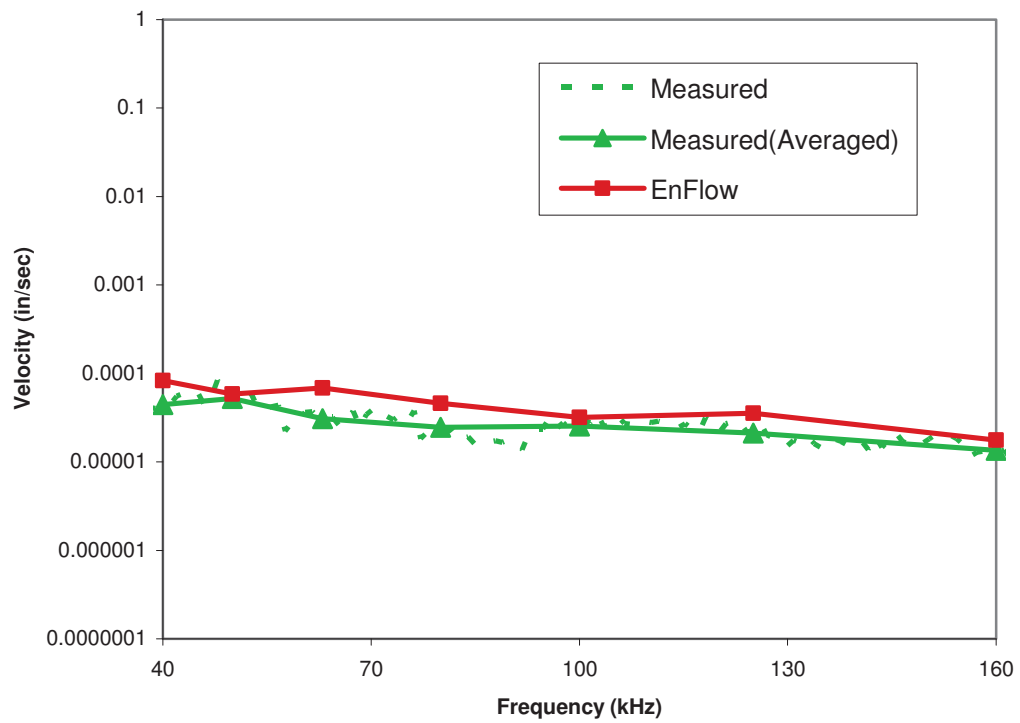


Figure 12. Flexural Velocity of Sensor 7

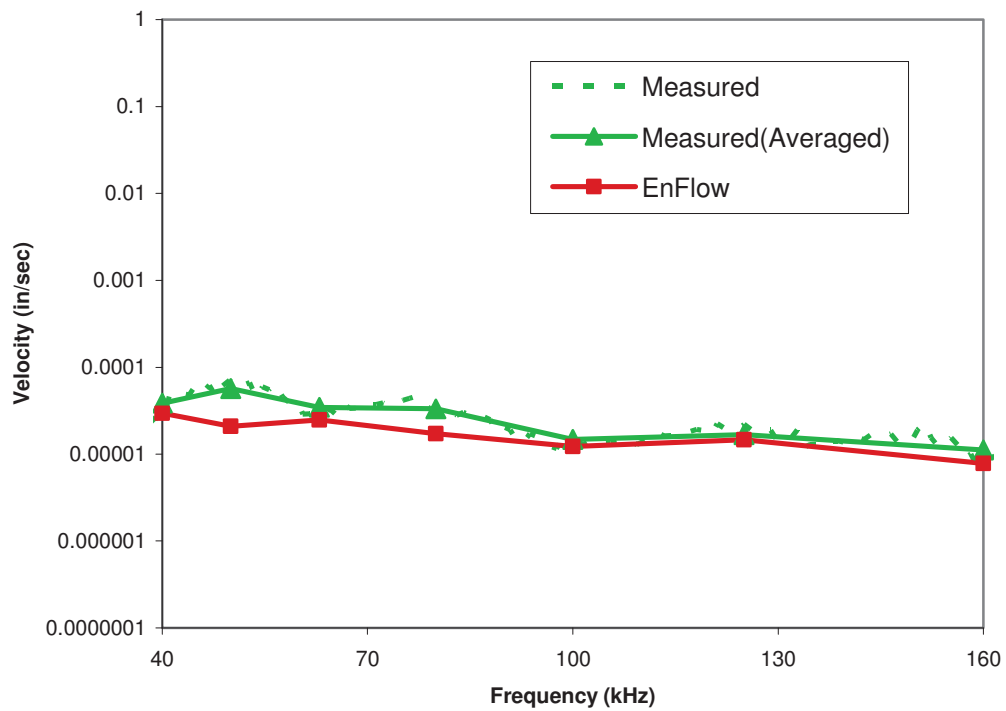


Figure 13. Flexural Velocity of Sensor 6

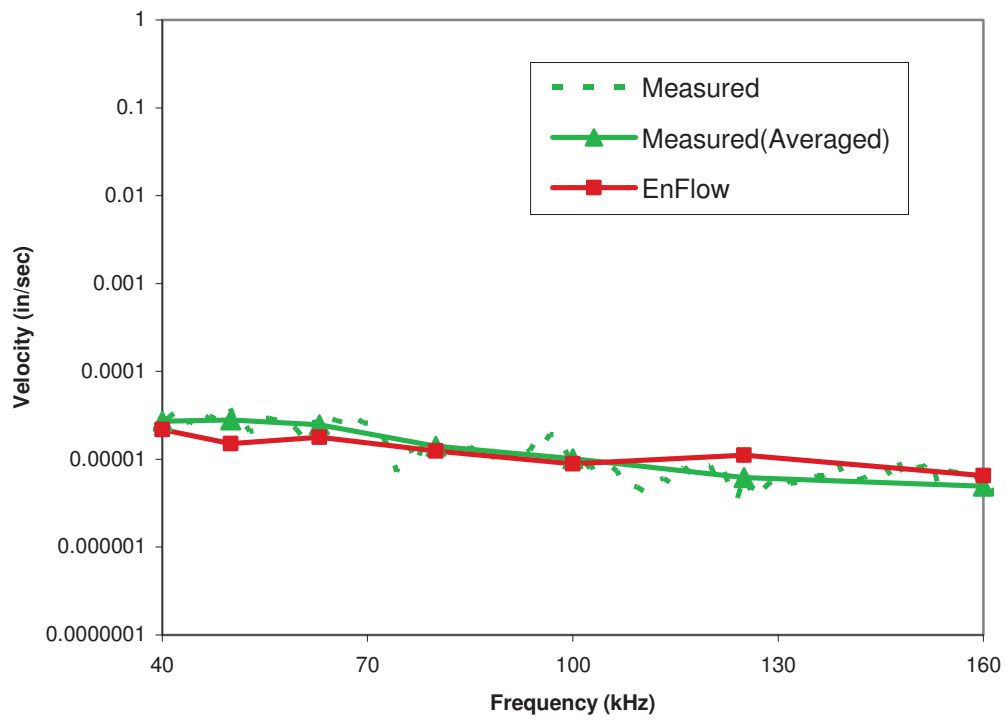


Figure 14. Flexural Velocity of Sensor 1

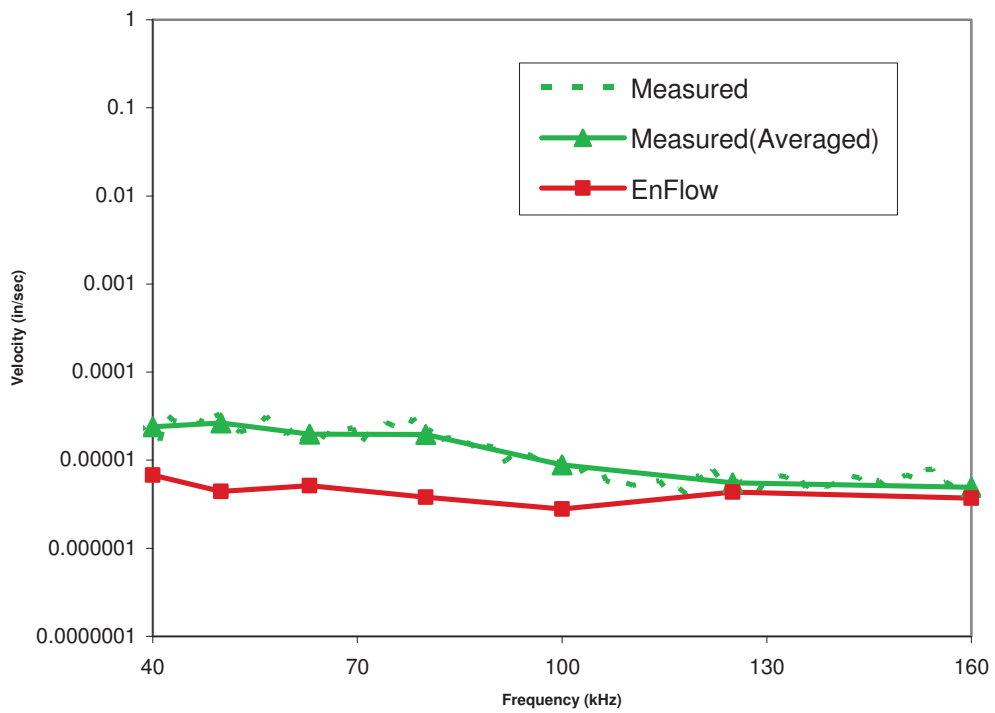


Figure 15. Flexural Velocity of Sensor 5

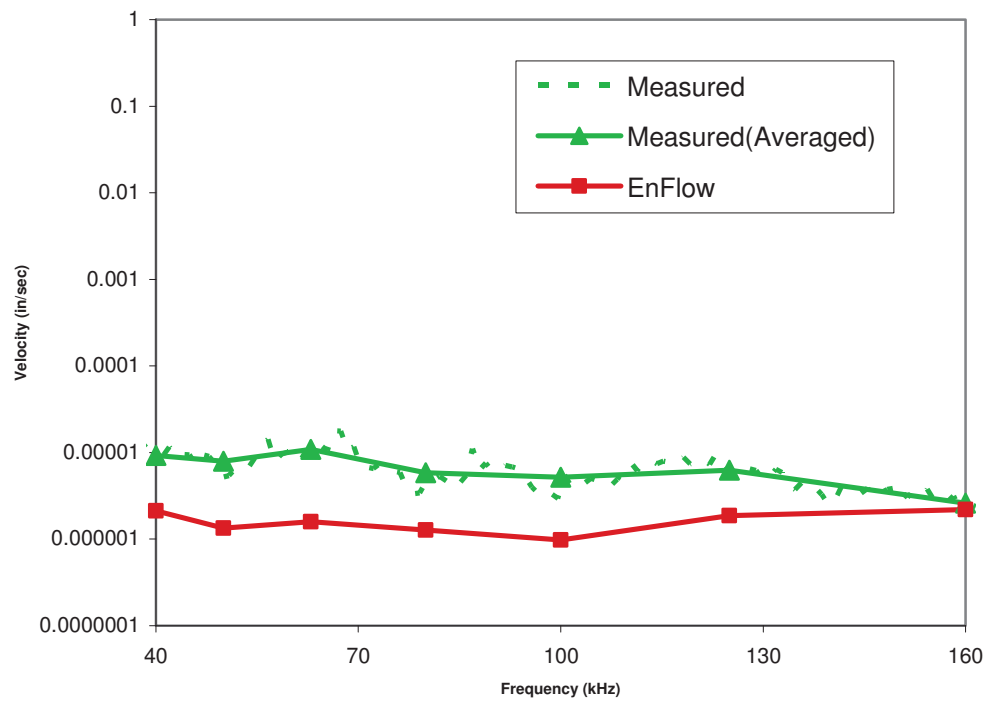


Figure 16. Flexural Velocity of Sensor 4

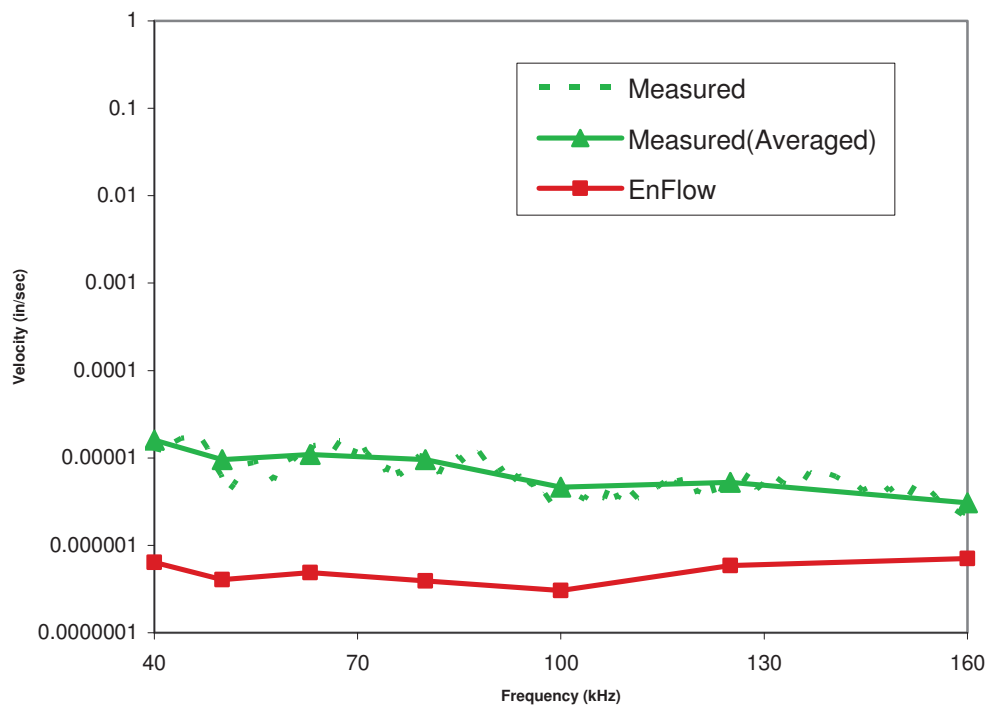


Figure 17. Flexural Velocity of Sensor 3

5.0 Remarks

Overall, good correlations are obtained. The flexural velocity by EnFlow at sensor 13 is identical to the measured data which indicates that the proper acceleration excitation is applied on the EnFlow model. The flexural velocity by EnFlow at sensor 7, sensor 6, sensor 1 and sensor 5 correlates well with the measured data. The Note that these four sensors are relatively close to the source location. The results demonstrate that the EnFlow captures properly the energy decay away from the source. Nevertheless, there are some differences among the measured and predicted flexural velocities at sensors 4 and 3 which are relatively far away from the source location.

In order to explore the possible causes for the differences, the measured and computed flexural velocity at all sensors are plotted in Figure 18 and Figure 19, respectively. The measured data at all sensors except sensor 3 show the energy decay to some extent with the distance to the source. While the data at sensor 3 looks unreasonably high which are above the data at sensor 4 almost over the whole frequency range. The EnFlow result demonstrates the clear energy decay phenomena due to damping for all sensors with the distance of sensors to the source. One reason could be related to measurement error. Since the signal is getting weaker as the sensor location move further away from the sources the measurement error may have been increased due to higher background noise. The measured data at sensor 4 and sensor 3 may be affected more by the background noise.

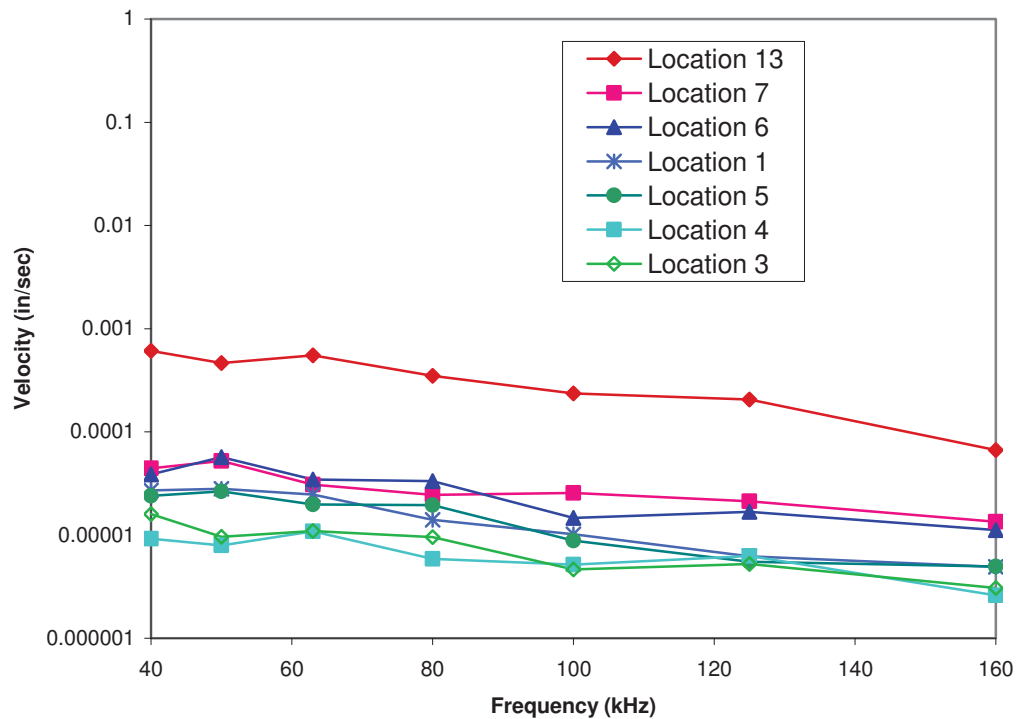


Figure 18. Measured Flexural Velocity at All Sensors

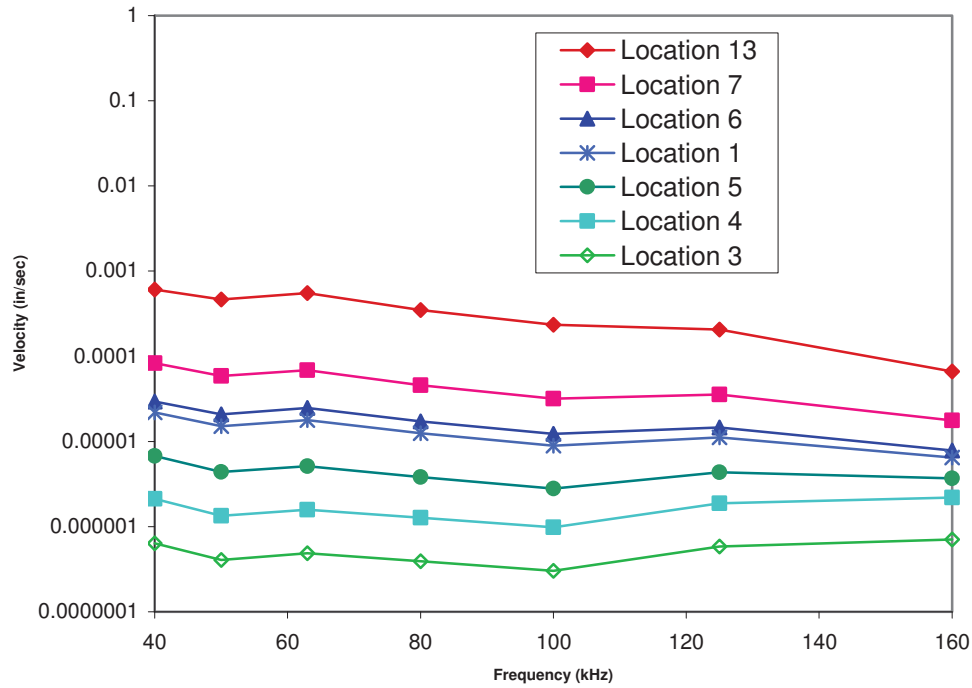


Figure 19. Flexural Velocity from EnFlow at All Sensors

Typically, acoustic emission data is in very high frequency range where the elastic wavelength is very small and the vibration behavior is highly sensitive to the structural detail. These characteristics make using conventional finite element method impractical. Comet/EnFlow, which is developed based on the high frequency energy finite element method (EFEM), is a suitable tool for this type of analysis. Especially, comparing to the other high frequency tool, the governing equations of EFEM is directly derived from the wave propagation model which can predict well the vibration variation over the structure subject to acoustic emission type of sources.

REPORT DOCUMENTATION PAGE				Form Approved OMB No. 0704-0188	
<p>The public reporting burden for this collection of information is estimated to average 1 hour per response, including the time for reviewing instructions, searching existing data sources, gathering and maintaining the data needed, and completing and reviewing the collection of information. Send comments regarding this burden estimate or any other aspect of this collection of information, including suggestions for reducing this burden, to Department of Defense, Washington Headquarters Services, Directorate for Information Operations and Reports (0704-0188), 1215 Jefferson Davis Highway, Suite 1204, Arlington, VA 22202-4302. Respondents should be aware that notwithstanding any other provision of law, no person shall be subject to any penalty for failing to comply with a collection of information if it does not display a currently valid OMB control number.</p> <p>PLEASE DO NOT RETURN YOUR FORM TO THE ABOVE ADDRESS.</p>					
1. REPORT DATE (DD-MM-YYYY) 01-04-2014		2. REPORT TYPE Contractor Report		3. DATES COVERED (From - To)	
4. TITLE AND SUBTITLE Calibration of International Space Station (ISS) Node 1 Vibro-Acoustic Model			5a. CONTRACT NUMBER NNL07AA00C		
			5b. GRANT NUMBER		
			5c. PROGRAM ELEMENT NUMBER		
6. AUTHOR(S) Zhang, Weiguo; Raveendra, Ravi			5d. PROJECT NUMBER		
			5e. TASK NUMBER 3-034CY2		
			5f. WORK UNIT NUMBER 401769.06.03.04.02.12		
7. PERFORMING ORGANIZATION NAME(S) AND ADDRESS(ES) NASA Langley Research Center Hampton, Virginia 23681			8. PERFORMING ORGANIZATION REPORT NUMBER		
9. SPONSORING/MONITORING AGENCY NAME(S) AND ADDRESS(ES) National Aeronautics and Space Administration Washington, DC 20546-0001			10. SPONSOR/MONITOR'S ACRONYM(S) NASA		
			11. SPONSOR/MONITOR'S REPORT NUMBER(S) NASA/CR-2014-218248		
12. DISTRIBUTION/AVAILABILITY STATEMENT Unclassified - Unlimited Subject Category 16 Availability: NASA CASI (443) 757-5802					
13. SUPPLEMENTARY NOTES This work was performed by Comet Technology Corporation for Science Systems and Applications, Inc., under NASA contract NNL07AA00C. Langley Technical Monitor: Eric I. Madaras					
14. ABSTRACT Reported here is the ability of utilizing the Energy Finite Element Method (E-FEM) to predict the vibro-acoustic sound fields within the International Space Station (ISS) Node 1 and to compare the results with actual measurements of leak sounds made by a one atmosphere to vacuum leak through a small hole in the pressure wall of the Node 1 STA module during its period of storage at Stennis Space Center (SSC). While the E-FEM method represents a reverberant sound field calculation, of importance to this application is the requirement to also handle the direct field effect of the sound generation. It was also important to be able to compute the sound fields in the ultrasonic frequency range. This report demonstrates the capability of this technology as applied to this type of application.					
15. SUBJECT TERMS Acoustics; Finite element method; International Space Station					
16. SECURITY CLASSIFICATION OF:			17. LIMITATION OF ABSTRACT	18. NUMBER OF PAGES	19a. NAME OF RESPONSIBLE PERSON
a. REPORT	b. ABSTRACT	c. THIS PAGE			STI Help Desk (email: help@sti.nasa.gov)
U	U	U	UU	18	19b. TELEPHONE NUMBER (Include area code) (443) 757-5802