

OPERATOR RESPONSIBILITIES

Operating a motor vehicle on National Forest System roads, National Forest System trails, and in areas on National Forest System lands carries a greater responsibility than operating that vehicle in a city or other developed setting. Not only must you know and follow all applicable traffic laws, you need to show concern for the environment as well as other forest users. The misuse of motor vehicles can lead to the temporary or permanent closure of any designated road, trail, or area. As a motor vehicle operator, you are also subject to State traffic law, including State requirements for licensing, registration, and operation of the vehicle in question.

Motor vehicle use, especially off-highway vehicle use, involves inherent risks that may cause property damage, serious injury, and possibly death to participants. Drive cautiously and anticipate rough surfaces and features, such as snow, mud, vegetation, and water crossings common to remote driving conditions. By your participation, you voluntarily assume full responsibility for these damages, risks, and dangers. Take care at all times to protect yourself and those under your responsibility.

Much of the Eldorado National Forest is remote. Medical assistance may not be readily available. Cellular telephones do not work in many areas of the Eldorado National Forest. Take adequate food, water, first aid supplies, and other equipment appropriate for the conditions and expected weather.

ALWAYS REMEMBER TO RESPECT PRIVATE LAND! PROTECT YOUR PRIVILEGE. STAY ON DESIGNATED ROADS AND TRAILS AND IN DESIGNATED AREAS.

Read and understand this map in its entirety. If you have questions please contact the Eldorado National Forest for clarification.

As a motor vehicle operator on a National Forest System road, trail, or area, you must comply with this map, as well as all Federal, State, and local laws and regulations. Compliance with these rules is your responsibility.

PROHIBITIONS

It is prohibited to possess or operate a motor vehicle on National Forest System lands on the Eldorado National Forest other than in accordance with these designations (36 CFR 261.13).

Violators of 36 CFR 261.13 are subject to a fine of up to \$5,000, or imprisonment for up to 6 months or both (18 U.S.C. 3571(e)). This prohibition applies regardless of the presence or absence of signs.

This map does not display nonmotorized uses, over-snow vehicle uses, or other facilities and attractions on the Eldorado National Forest. Obtain forest visitor information from the local national forest office.

Designated roads, trails, and areas may also be subject to temporary, emergency closures. As a visitor, you must comply with signs notifying you of such restrictions. A national forest may issue an order to close a road, trail, or area on a temporary basis to protect the life, health or safety of forest visitors or the natural or cultural resources in these areas. Such temporary and/or emergency closures are consistent with the Travel Management Rule (36 CFR 212.52 (b), 36 CFR 261 subpart B).

The designation "road or trail open to all motor vehicles" does not supersede State traffic law.

Legend

- Roads Open to Highway Legal Vehicles
- Roads Open to All Vehicles
- Trails Open to All Vehicles
- Trails Open to Wheeled Vehicles
- 50' or Less in Width
- Trails Open to Motorcycles Only
- Seasonal Designation (Open 04/01-12/31)
- Highways, US, State, County
- Other Public Roads
- Roads or Trails Less Than 0.25 mile (1320 feet) - See Table
- FS Campground
- Picnic Area
- Motorized Trailhead
- Information Site
- Peaks
- Forest or Unit Boundary
- National Forest System Lands
- Non-National Forest System Lands within the National Forest
- Wilderness Areas
- Large Lakes

North American Datum of 1983 (NAD 83)  
Universal Transverse Mercator, zone 10

EXPLANATION OF LEGEND ITEMS

Roads Open to Highway Legal Vehicles Only:

These roads are open only to motor vehicles licensed under State law for general operation on all public roads within the State.

Roads Open to All Vehicles:

These roads are open to all motor vehicles, including smaller off-highway vehicles that may not be licensed for highway use (but not to oversize or overweight vehicles under State traffic law).

Trails Open to All Vehicles:

These trails are open to all motor vehicles, including both highway legal and nonhighway legal vehicles.

Trails Open to Wheeled Vehicles 50' or Less in Width:

These trails are open only to wheeled, motor vehicles less than 50 inches in width at the widest point on the vehicle.

Trails Open to Motorcycles Only:

These trails are open only to motorcycles. Sidecars are not permitted.

Seasonal Designation:

This symbol, used in conjunction with one of the other road or trail symbols, indicates that the road or trail is open only during certain portions of the year. Refer to the Seasonal Designation Table for further instructions.

Other Public Roads:

Highways, U.S., State, County  
Other Public Roads

These symbols are used to show routes the Forest Service does not have jurisdiction over and has not designated for motorized use. These symbols are part of the reference layers showing connections to towns and cities outside the forest boundary.

Roads or Trails Less Than 0.25 Miles (1320 feet):

09N50B

This symbol is used for routes that are too short to show an actual symbol type on the map. The symbol contains the number of the road or trail. Users should refer to the corresponding number in the Short Route Table for designation information.

Motorized Trail Access:



This symbol indicates a trailhead for access to a motorized route. Not all motorized routes have trailheads and those that do may range from primitive to developed.

Parking Along Designated Routes

Motor vehicles may be parked within one vehicle length from the edge of the road surface when it is safe to do so without causing damage to NFS resources or facilities, unless prohibited by State law, a traffic sign, or an order (36 CFR 261.54).

Seasonal Designation

All routes with a seasonal designation are open from 04/01 to 12/31.

INFORMATION SOURCES

Forest Supervisor's Office

Eldorado National Forest  
100 Forni Road  
Placerville CA 95667  
(530) 622-5061 TTY (530) 642-5122  
http://www.fs.usda.gov/eldorado

Amador Ranger District

28820 Silver Creek Road  
Pioneer CA 95666  
(209) 295-4251

Georgetown Ranger District

7600 Wentworth Springs Road  
Georgetown CA 95634  
(530) 333-4312

Pacific Ranger District

7867 Highway 50  
Pollock Pines CA 95726  
(530) 644-2349

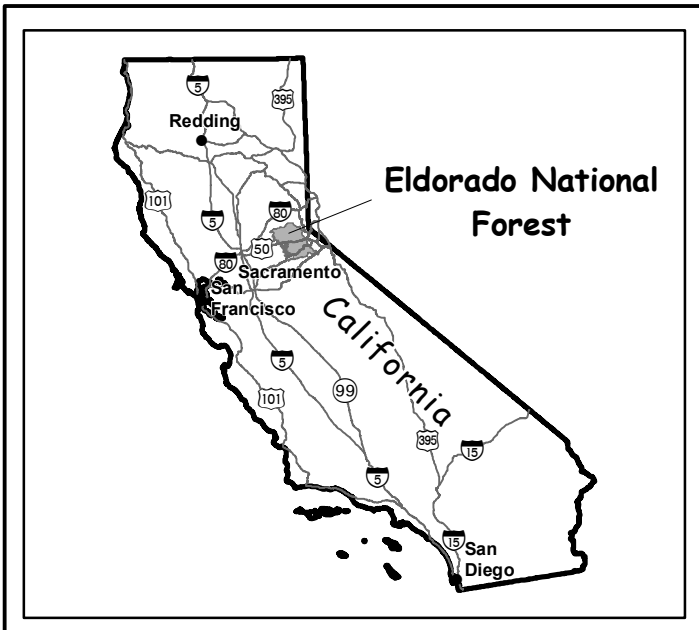
Placerville Ranger District

4260 Eight Mile Road  
Camino CA 95709  
(530) 644-2324

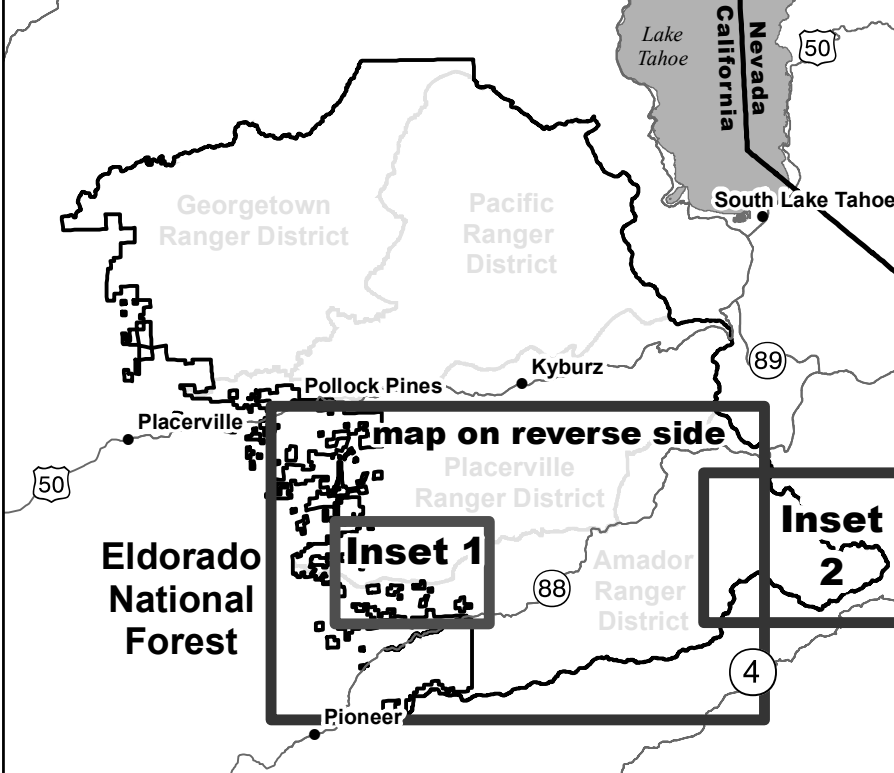
In Case of Emergency

In case of medical or law enforcement emergencies, dial 911. Please be advised that many areas of the forest are not covered by regular cell phone service.

VICINITY MAP

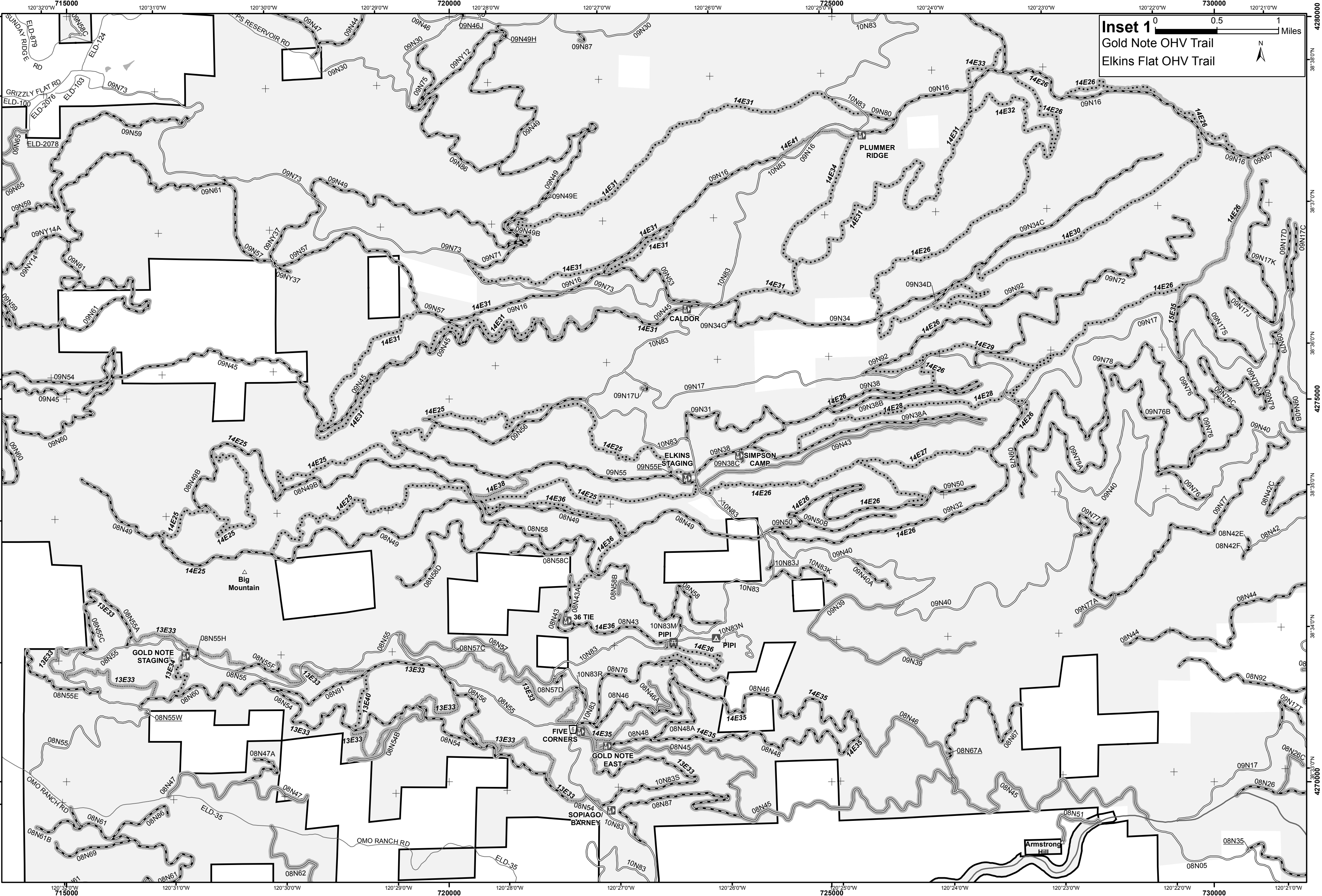


Amador Ranger District  
Map Index



Inset 1 Map - Routes Less Than 0.25 Miles (1,320 feet)

Route Number	Length in Feet	Legend
08N35	73	Roads Open to All Vehicles, Seasonal
08N55W	136	Roads Open to Highway Legal Vehicles, Seasonal
08N57C	255	Roads Open to Highway Legal Vehicles, Seasonal
08N67A	192	Roads Open to All Vehicles, Seasonal
09N38C	489	Roads Open to Highway Legal Vehicles, Seasonal
09N46J	159	Roads Open to All Vehicles, Seasonal
09N49H	308	Roads Open to Highway Legal Vehicles, Seasonal
09N55E	305	Roads Open to All Vehicles, Seasonal
10N83J	403	Roads Open to All Vehicles, Seasonal
ELD-2078	164	Other Public Roads



Motor Vehicle  
Use Map

Eldorado National Forest  
Amador Ranger District

California  
Forest Service

United States Department of Agriculture



tread lightly!  
LEAVING A GOOD IMPRESSION



Maps on the Go!  
Scan here to access on  
your Smart Device.