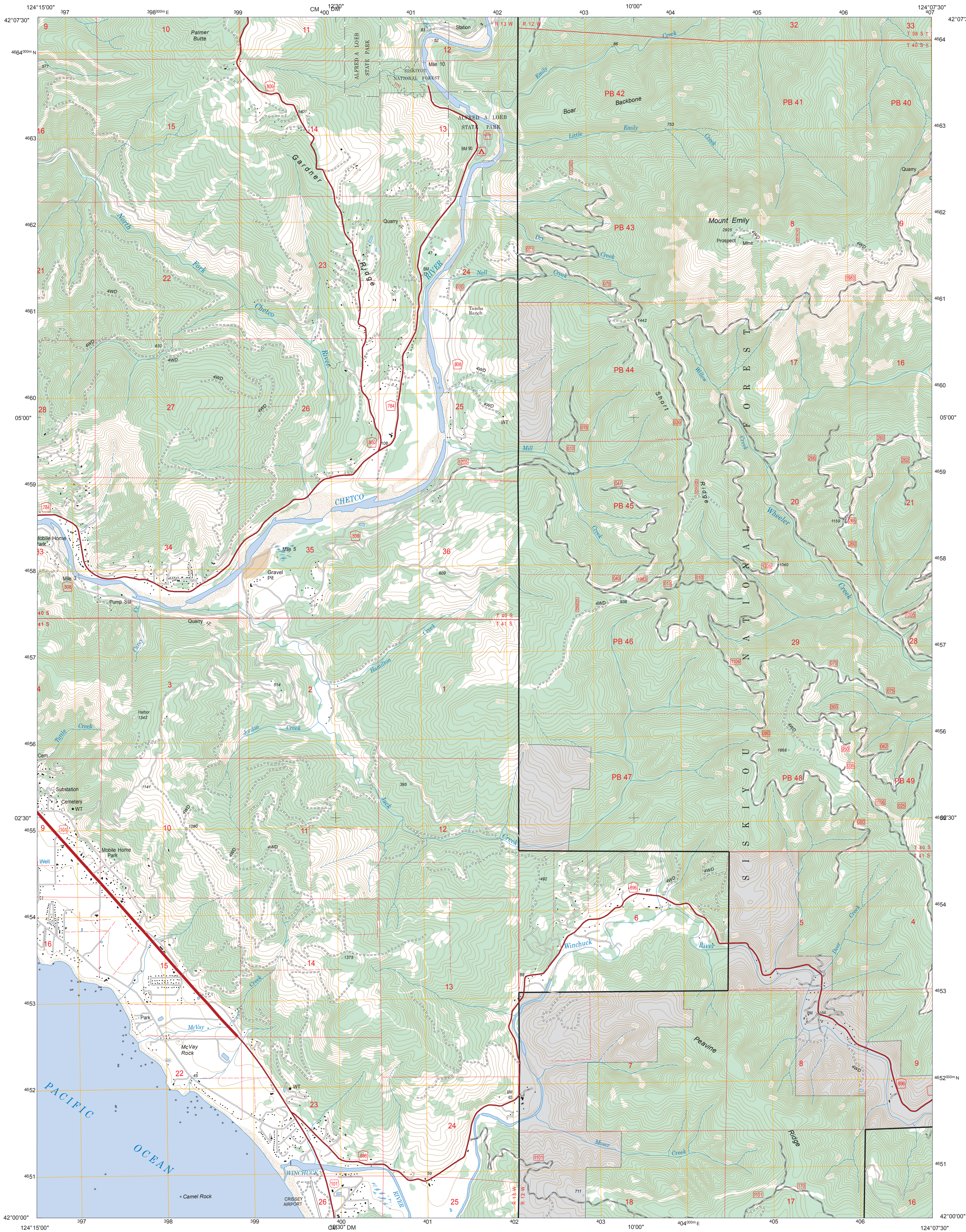




U.S. DEPARTMENT OF AGRICULTURE
FOREST SERVICE

MOUNT EMILY QUADRANGLE
OREGON
7.5-MINUTE SERIES (TOPOGRAPHIC)



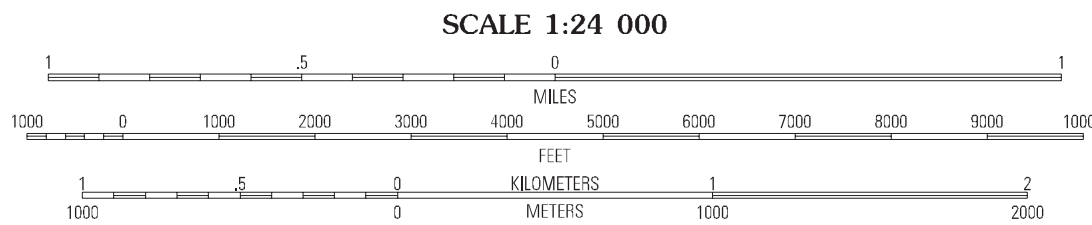
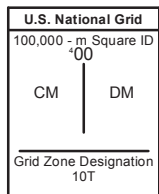
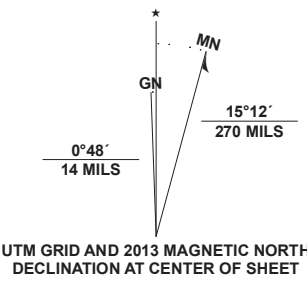
Produced by the USDA Forest Service.
North American Datum of 1983 (NAD 83).
Projection and 1,000-meter ties: Universal Transverse Mercator, zone 10.

Full Revision of Forest Service lands 2006
Updates to Transportation 2006
Updates to Boundaries 2006

Non-National Forest System lands within the National Forest as of 2006.
Inholdings may exist in other National or State reservations.

This is not a legal document. Public lands are subject to change and leasing, and may have access restrictions. Not all roads and trails on this map are open to motor vehicle use. Check with appropriate officials and obtain appropriate regulatory maps and information. Obtain permission before entering private lands.

This map product uses the most current data available in the USDA Forest Service cartographic database. Modifications, updates, and corrections may be made at any time. Print quality is determined by the output device used when producing a hardcopy product.



Carpenterville	Baskey Butte	Quail Prairie Mountain
Brookings	Mount Emily	Fourth of July Creek
Smith River	High Divide	

ADJOINING QUADRANGLES

HIGHWAYS AND ROADS

Interstate.....	5	Highway.....	
U.S.	101	Road, Unspecified.....	
State.....	79	Road, Paved.....	
County.....	6	Road, Gravel.....	
National Forest, suitable for passenger cars.....	103	Road, Dirt.....	
National Forest, suitable for high clearance vehicles.....	60	Unimproved, 4 wheel drive.....	
National Forest Trail.....	384	Trail.....	
		Gate Barrier.....	
		Check with local Forest Service unit for current travel conditions and restrictions	

This product generated and downloaded on 12/16/2014

MOUNT EMILY, OR