



An Optimal Orthogonal Decomposition Method for Kalman Filter-Based Turbofan Engine Thrust Estimation

Jonathan S. Litt

U.S. Army Research Laboratory, Glenn Research Center, Cleveland, Ohio

The NASA STI Program Office . . . in Profile

Since its founding, NASA has been dedicated to the advancement of aeronautics and space science. The NASA Scientific and Technical Information (STI) Program Office plays a key part in helping NASA maintain this important role.

The NASA STI Program Office is operated by Langley Research Center, the Lead Center for NASA's scientific and technical information. The NASA STI Program Office provides access to the NASA STI Database, the largest collection of aeronautical and space science STI in the world. The Program Office is also NASA's institutional mechanism for disseminating the results of its research and development activities. These results are published by NASA in the NASA STI Report Series, which includes the following report types:

- **TECHNICAL PUBLICATION.** Reports of completed research or a major significant phase of research that present the results of NASA programs and include extensive data or theoretical analysis. Includes compilations of significant scientific and technical data and information deemed to be of continuing reference value. NASA's counterpart of peer-reviewed formal professional papers but has less stringent limitations on manuscript length and extent of graphic presentations.
- **TECHNICAL MEMORANDUM.** Scientific and technical findings that are preliminary or of specialized interest, e.g., quick release reports, working papers, and bibliographies that contain minimal annotation. Does not contain extensive analysis.
- **CONTRACTOR REPORT.** Scientific and technical findings by NASA-sponsored contractors and grantees.

- **CONFERENCE PUBLICATION.** Collected papers from scientific and technical conferences, symposia, seminars, or other meetings sponsored or cosponsored by NASA.
- **SPECIAL PUBLICATION.** Scientific, technical, or historical information from NASA programs, projects, and missions, often concerned with subjects having substantial public interest.
- **TECHNICAL TRANSLATION.** English-language translations of foreign scientific and technical material pertinent to NASA's mission.

Specialized services that complement the STI Program Office's diverse offerings include creating custom thesauri, building customized databases, organizing and publishing research results . . . even providing videos.

For more information about the NASA STI Program Office, see the following:

- Access the NASA STI Program Home Page at <http://www.sti.nasa.gov>
- E-mail your question via the Internet to help@sti.nasa.gov
- Fax your question to the NASA Access Help Desk at 301-621-0134
- Telephone the NASA Access Help Desk at 301-621-0390
- Write to:
NASA Access Help Desk
NASA Center for Aerospace Information
7121 Standard Drive
Hanover, MD 21076



An Optimal Orthogonal Decomposition Method for Kalman Filter-Based Turbofan Engine Thrust Estimation

Jonathan S. Litt
U.S. Army Research Laboratory, Glenn Research Center, Cleveland, Ohio

Prepared for the
Turbo Expo 2005
sponsored by the American Society of Mechanical Engineers
Reno, Nevada, June 6–9, 2005

National Aeronautics and
Space Administration

Glenn Research Center

Acknowledgments

The author wishes to thank Tak Kobayashi for his inspirational discussions and insights that led to the development of this work.

Available from

NASA Center for Aerospace Information
7121 Standard Drive
Hanover, MD 21076

National Technical Information Service
5285 Port Royal Road
Springfield, VA 22100

Available electronically at <http://gltrs.grc.nasa.gov>

An Optimal Orthogonal Decomposition Method for Kalman Filter-Based Turbofan Engine Thrust Estimation

Jonathan S. Litt
U.S. Army Research Laboratory
Glenn Research Center
Cleveland, Ohio 44135

Abstract

A new linear point design technique is presented for the determination of tuning parameters that enable the optimal estimation of unmeasured engine outputs such as thrust. The engine's performance is affected by its level of degradation, generally described in terms of unmeasurable health parameters related to each major engine component. Accurate thrust reconstruction depends upon knowledge of these health parameters, but there are usually too few sensors to be able to estimate their values. In this new technique, a set of tuning parameters is determined which accounts for degradation by representing the overall effect of the larger set of health parameters as closely as possible in a least squares sense. The technique takes advantage of the properties of the singular value decomposition of a matrix to generate a tuning parameter vector of low enough dimension that it can be estimated by a Kalman filter. A concise design procedure to generate a tuning vector that specifically takes into account the variables of interest is presented. An example demonstrates the tuning parameters' ability to facilitate matching of both measured and unmeasured engine outputs, as well as state variables. Additional properties of the formulation are shown to lend themselves well to diagnostics.

Introduction

In-flight estimation of unmeasurable turbofan engine outputs such as thrust is difficult because the values depend on the degradation level of the engine, which is often not known accurately. Degradation is generally defined in terms of off-nominal values of health parameters such as efficiency and flow capacity, related to each major engine component. It is possible to estimate these health parameter deviations, given that there are at least as many sensors as parameters to be estimated. In standard engine installations, however, there are typically fewer sensors than health parameters, making accurate estimation impossible. An approach used in this situation is to select a subset of health parameters to estimate, assuming the others remain unchanged. If any of the unaccounted-for health parameters deviate from nominal, their effect will be captured to some extent in the estimated subset. As a result, the estimated values will no longer represent the true health parameter deviations. There are examples in the literature of a subset of health parameter "tuners" being used to reconstruct performance variables such as thrust (refs. 1 to 3), but this approach of health parameter subset selection is much better established as a diagnostic tool for gas path analysis (refs. 4 to 6), where studies have determined which health parameters

give good indications of certain faults for particular types of turbine engines (refs. 7 to 9).

When a Kalman filter is used to estimate the subset of health parameters, the estimates of measured outputs will usually be good, i.e., the sensed outputs and the recreated values obtained using the health parameter estimates will match, even if the health parameter estimates themselves are inaccurate. However, good estimation of sensed outputs does not guarantee that the estimation of unmeasured outputs will be accurate. Since thrust is affected by the level of degradation, poor health parameter estimation can result in poor thrust reconstruction. It might be possible to determine a subset of health parameters that produces good thrust reconstruction even when all health parameters deviate, but this is a time-consuming, empirical, trial-and-error process that gives no guarantee about the optimality of the result given the potential range of health parameter deviations and operating conditions.

The main issue that affects the estimation accuracy is that the total influence of the health parameters needs to be approximated using fewer variables. The selection of a subset of health parameters is not a general approach to solving this problem as long as all health parameters may deviate. We would like to derive a set of tuning parameters (not necessarily a subset of health parameters) that is smaller in dimension than the set of health parameters, but retains as much information as possible from that original set.

The following sections of this paper describe and formulate the thrust estimation problem mathematically, and then outline a new approach to the solution using singular value decomposition to obtain an optimal set of tuners. Following that, a concise design process is described that generates a set of optimal tuners at each operating (linearization) point, explicitly including all variables of interest; these tuners are incorporated into the Kalman filter to provide the optimal estimates. The technique is then demonstrated through an example. After the example, there is general discussion about the technique that covers other applications, such as its use as a diagnostic tool. Finally conclusions are presented.

Nomenclature

$A, A_{Aug}, B,$	system matrices
$B_{Aug}, C, C_{Aug},$	
$D, E, E_{Aug}, F,$	
G, L, M, N	
e, w	noise vectors
FAN	Fan
FG	Gross Thrust
FN	Net Thrust

HPC	High Pressure Compressor
HPT	High Pressure Turbine
LPC	Low Pressure Compressor
LPT	Low Pressure Turbine
LS	Least Squares (subscript)
p	vector of health parameters
P17	Bypass discharge pressure
P25	HPC inlet pressure
PS3	Combustor inlet static pressure
Q, R	noise covariance matrices
q	vector of optimal tuners
SMW12	Fan stall margin
SMW2	LPC stall margin
SMW25	HPC stall margin
T25	HPC inlet temperature
T3	Combustor inlet temperature
T49	LPT inlet temperature
TMHS23	LPC metal temperature
TMHS3	HPC metal temperature
TMHS41	HPT nozzle metal temperature
TMHS42	HPT metal temperature
TMHS5	LPT metal temperature
TMBRNC	Combustor case metal temperature
TMBRNL	Combustor liner metal temperature
U	orthogonal matrix obtained using SVD
U^*	optimal transformation matrix
u	vector of control inputs
u_i	i th column of U
V	orthogonal matrix obtained using SVD
V^*	optimal transformation matrix
v_i	i th column of V
VBV	Variable bleed valve
VSV	Variable stator vane
WF36	Fuel flow
WR2A	Total FAN corrected flow
x	state vector
x_{Aug}	augmented state vector
XN12	Low-pressure spool speed
XN25	High-pressure spool speed
z	vector of auxiliary outputs
δ	vector of health parameter-induced shifts
Σ	singular value matrix obtained using SVD
σ_i	i th singular value

Problem Development

For a linear point design or a piece-wise linear state variable model, the equations of interest are

$$\begin{aligned}
 \dot{x} &= Ax + Bu + Lp + e \\
 y &= Cx + Du + Mp + w \\
 z &= Ex + Fu + Np
 \end{aligned} \tag{1}$$

where x is the vector of state variables, u is the vector of control inputs, y is the vector of measured outputs, and z is the vector of auxiliary (unmeasurable or at least unmeasured) model-based outputs. The vector p represents the engine health

parameters, which induce shifts in other variables as the health parameters move away from their nominal values. The vector e represents white process noise with covariance Q , and w represents white measurement noise with covariance R . The matrices A , B , C , D , E , F , L , M , and N are of appropriate dimension.

As the health parameter vector p is an unknown input to the system, we would like to be able to estimate it since it affects unmeasurable parameters such as thrust. The health parameters may be treated as a set of biases, and thus are modeled without dynamics. With this interpretation, we can represent equation (1) as

$$\begin{aligned}
 \begin{bmatrix} \dot{x} \\ \dot{p} \end{bmatrix} &= \begin{bmatrix} A & L \\ 0 & 0 \end{bmatrix} \begin{bmatrix} x \\ p \end{bmatrix} + \begin{bmatrix} B \\ 0 \end{bmatrix} u + e = A_{Aug} x_{Aug} + B_{Aug} u + e \\
 y &= \begin{bmatrix} C & M \end{bmatrix} \begin{bmatrix} x \\ p \end{bmatrix} + Du + w = C_{Aug} x_{Aug} + Du + w \\
 z &= \begin{bmatrix} E & N \end{bmatrix} \begin{bmatrix} x \\ p \end{bmatrix} + Fu = E_{Aug} x_{Aug} + Fu
 \end{aligned} \tag{2}$$

This new system has at least as many eigenvalues at the origin as there are elements of p (the eigenvalues of A_{Aug} are the eigenvalues of A plus an additional $\dim(p)$ zeros due to the augmentation). Once the p vector is appended to the state vector, it may be directly estimated, provided that the realization in equation (2) is observable.

Using this formulation, the number of health parameters that can be estimated is limited to the number of sensors, the dimension of y (ref. 10). This is easily seen by examining the observability criterion (ref. 11), which states that for observability, the matrix $[(\lambda I - A_{Aug})^T C_{Aug}^T]^T$ must be full rank for each eigenvalue, λ , of A_{Aug} , i.e.,

$$\forall \lambda \in \{\text{eig}(A_{Aug})\}, \text{rank} \left(\begin{bmatrix} \lambda I - A_{Aug} \\ C_{Aug} \end{bmatrix} \right) = \dim(x_{Aug}) .$$

Since the matrix A_{Aug} in equation (2) clearly has at least as many zero eigenvalues as there are health parameters, the observability criterion matrix reduces to $[-A_{Aug}^T \ C_{Aug}^T]^T$ for each zero eigenvalue, implying that for observability, C_{Aug} must have at least as many rows (i.e., there must be at least as many sensors) as A_{Aug} has rows of zeros.

Since there are usually fewer sensors than health parameters, the problem becomes one of choosing the best set of tuners for the application. This is addressed next.

Problem Formulation

In this work, the objective is to determine a tuning vector of low enough dimension to be estimated, that represents as much of the health parameter information as possible in a known way. This tuning vector should permit shifts in the variables of interest, caused by health parameter deviations, to be represented as closely as possible in a least squares sense.

We may define δ as the vector of shifts due to the health parameters,

$$\delta = \begin{bmatrix} L \\ M \\ N \end{bmatrix} p = Gp. \quad (3)$$

Given that the number of elements in the tuning vector (tuners) is less than the number of health parameters, we know that, except for specific cases, the estimated tuners will not represent true health parameter values. Therefore, there is no reason to model the tuning vector as a subset of existing health parameters and, in fact, δ can be matched more closely without this constraint. The key is to find a matrix U^* and tuning vector q that correspond to G and p in equation (3), of small enough dimension that the tuning vector can be estimated, and the product approximates δ in a least squares sense. That is, $\delta = Gp \approx \hat{\delta} = U^* q$, $p \in \mathbb{R}^n$, $q \in \mathbb{R}^k$, $k < n$ and

$$J = (\delta - \hat{\delta})^T (\delta - \hat{\delta}) = \tilde{\delta}^T \tilde{\delta} \quad (4)$$

is minimized.

For the tuning vector q to contain as much of the information contained in p as possible, p is mapped into q through a transformation V^* such that $q = V^* p$ where V^* is full rank. Thus equation (4) becomes

$$\begin{aligned} J &= (\delta - \hat{\delta})^T (\delta - \hat{\delta}) = (Gp - U^* q)^T (Gp - U^* q) \\ &= p^T (G - U^* V^*)^T (G - U^* V^*) p \end{aligned} \quad (5)$$

Since G may have rank as large as n (full rank) and the inner dimension of $U^* V^*$ is only k , $U^* V^*$ will not be full rank. Thus equation (5) may be rewritten in vector 2-norm notation,

$$J = \min_{\text{rank}(U^* V^*)=k} \|\delta - U^* V^* p\|_2^2. \quad (6)$$

Another interpretation of equation (5) is that we want to approximate G by a lower rank matrix through the minimization of the Frobenius norm (the square root of the sum of the squares of each matrix element), i.e.,

$$J = \min_{\text{rank}(U^* V^*)=k} \|G - U^* V^*\|_F.$$

The solution to both of these minimization problems is obtained using Singular Value Decomposition (SVD) (ref. 12), and we shall show that SVD leads to an optimal solution of the form $U^* V^*$.

Singular Value Decomposition

The Singular Value Decomposition (SVD) of any $m \times n$ matrix G , with $m \geq n$, may be defined as

$$G = U \Sigma V^T \quad (7)$$

where U and V^T are orthonormal square matrices, $U \in \mathbb{R}^{m \times m}$, $V \in \mathbb{R}^{n \times n}$, and Σ is a matrix of the same dimensions as G , with the upper portion a diagonal matrix of the singular values of G and the lower portion all zeroes. That is

$$\Sigma = \begin{bmatrix} \sigma_1 & 0 & \cdots & 0 \\ 0 & \sigma_2 & & \vdots \\ \vdots & & \ddots & 0 \\ 0 & \cdots & 0 & \sigma_n \\ 0 & \cdots & 0 & 0 \end{bmatrix}$$

where $\sigma_1 \geq \sigma_2 \geq \cdots \geq \sigma_n \geq 0$, $UU^T = I_m$, and $VV^T = I_n$.

Some algebraic manipulation shows that equation (7) is equivalent to

$$G = \sum_{i=1}^n \sigma_i u_i v_i^T \quad (8)$$

where u_i is the i th column of U and v_i is the i th column of V (v_i^T the i th row of V^T). Equation (8) is called the rank one decomposition of G because G is represented by the sum of rank one matrices.

If the rank of an $m \times n$ matrix H is $k < n$, its SVD is

$$\begin{aligned} H &= \underbrace{[u_1 \cdots u_k \ u_{k+1} \cdots u_m]}_{U_k} \begin{bmatrix} \Sigma_k & 0 \\ 0 & 0 \end{bmatrix} \underbrace{[v_1 \cdots v_k \ v_{k+1} \cdots v_n]^T}_{V_k^T} \\ &= [U_k \ u_{k+1} \cdots u_m] \begin{bmatrix} \Sigma_k & 0 \\ 0 & 0 \end{bmatrix} [V_k \ v_{k+1} \cdots v_n]^T \\ &= U_k \Sigma_k V_k^T \end{aligned} \quad (9)$$

where U_k consists of the first k columns of U , V_k consists of the first k columns of V , and Σ_k is the upper left diagonal $k \times k$ block of Σ containing the non-zero singular values.

The linear least squares problem

$$\min_{\text{rank}(H)=k} \|\delta - Hp\|_2^2$$

can be solved using equation (9) as

$$\begin{aligned} p_{LS} &= H^\dagger \delta \\ &= [V_k \ v_{k+1} \cdots v_m] \begin{bmatrix} \Sigma_k^{-1} & 0 \\ 0 & 0 \end{bmatrix} [U_k \ u_{k+1} \cdots u_n]^T \delta \\ &= V_k \Sigma_k^{-1} U_k^T \delta \end{aligned} \quad (10)$$

where the pseudo-inverse of the non-square, non-full rank, block diagonal singular value matrix Σ in equation (9) is that matrix's transpose with the non-zero block inverted.

Additionally, any full rank $m \times n$ matrix G , with $m \geq n$, is most closely approximated in the Frobenius norm sense by a matrix H of rank $k < n$, i.e.,

$$\|G - H\|_F = \min_{\text{rank}(H)=k} \|G - H\|_F,$$

when H is given by

$$H = \sum_{i=1}^k \sigma_i u_i v_i^T = U_k \Sigma_k V_k^T, \quad (11)$$

the first k terms of equation (8).

The Frobenius norm is equal to the square root of the sum of the squares of the singular values of the matrix, (which is equal to the square root of the sum of the squares of each matrix element) so $\|G - H\|_F = \sqrt{\sigma_{k+1}^2 + \dots + \sigma_n^2}$ is minimal since the singular values are ordered from largest to smallest and the difference consists of only the smallest ones.

Thus, equations (9) and (11) are the same, and both imply equation (10). Moreover, the solution has the structure of the original U^*V^* formulation proposed in equation (5), even though this structure was not assumed in the derivation of these results, it simply falls out as a consequence of the SVD approach (see reference 12 or a similar text for derivations, proofs, definitions of norms, etc.).

This demonstrates that using the SVD to obtain the U^*V^* formulation will indeed give the optimal approximation to δ in a least squares sense. The procedure for coming up with the optimal matrices and their use will be described next.

Design Procedure

The design procedure follows directly from the above derivation.

1. For each linearization point, create G by stacking L , M , and N as in equation (3). The L and M matrices must be included for the accuracy of the Kalman filter estimates, the variables used to create N are left to the user's discretion.
2. Compute the magnitude of each row g_i of G as $g_i g_i^T$ for scaling. Premultiply G by

$$W = \begin{bmatrix} \sqrt{g_1 g_1^T} & 0 & 0 \\ 0 & \ddots & 0 \\ 0 & 0 & \sqrt{g_m g_m^T} \end{bmatrix}^{-1}.$$

This is important because there may be several orders of magnitude difference between the values in different rows of G , and, since the SVD minimizes the difference between the elements of G and U^*V^* in a least squares sense (Frobenius norm), all rows should be about the same magnitude to prevent the large matrix elements from dominating. Recognizing, however, that some variables need to be estimated more accurately than others,

additional weights can be incorporated into the diagonal elements of W to account for this relative importance. This is all done after any other scaling or balancing used to develop the initial realization (eq. 1).

3. Compute the SVD as in equation (7) from the scaled G , $WG = (WU)\Sigma V^T$.
4. Unscale WU by premultiplying by W^{-1} . This brings the magnitude of each row back to its appropriate level and makes it compatible with the rest of the realization.
5. Generate U^* and V^* by selecting only the k most significant terms of equation (8). At most, k will equal the number of sensors less the number of zero eigenvalues in the original A matrix. Incorporate the $k \times k$ singular value matrix into U^* such that $U^* = U_k \Sigma_k$ and $V^* = V_k^T$. Thus

$$G = \begin{bmatrix} L \\ M \\ N \end{bmatrix} \approx \hat{G} = (U_k \Sigma_k) V_k^T$$

$$= U^* V^* = \begin{bmatrix} U_L^* \\ U_M^* \\ U_N^* \end{bmatrix} V^* = \begin{bmatrix} \hat{L} \\ \hat{M} \\ \hat{N} \end{bmatrix}$$

where $U_L^* V^* = \hat{L} \approx L$, $U_M^* V^* = \hat{M} \approx M$, and $U_N^* V^* = \hat{N} \approx N$. Thus we have generated a common right factor for the approximation of all three matrices L , M , and N .

6. Using the rows of U^* that correspond to the original L , M , and N , set up the Kalman filter using the new augmented system equations

$$\begin{bmatrix} \dot{x} \\ \dot{q} \end{bmatrix} = \begin{bmatrix} A & U_L^* \\ 0 & 0 \end{bmatrix} \begin{bmatrix} x \\ q \end{bmatrix} + \begin{bmatrix} B \\ 0 \end{bmatrix} u + e$$

$$y = \begin{bmatrix} C & U_M^* \end{bmatrix} \begin{bmatrix} x \\ q \end{bmatrix} + Du + w$$

$$z = \begin{bmatrix} E & U_N^* \end{bmatrix} \begin{bmatrix} x \\ q \end{bmatrix} + Fu$$
(12)

This system will generally be observable if q is of small enough dimension.

Turbofan Engine Example

A large commercial turbofan engine model linearized at a cruise operating point is used to evaluate the concept. The model has nine state variables, 10 health parameters, three control inputs, all shown in table 1, and seven sensors, shown in table 2. The auxiliary outputs of interest are shown in table 3. The linear model is used as the "truth" model for this example. It must be noted that for this work, the P25 measurement in the conventional sensor suite is replaced by P17. Without this substitution, thrust estimation is poor. This indicates that the

ability to estimate unmeasured outputs is strongly influenced by sensor location. The weights on net and gross thrust (step 2 in the design procedure) are doubled because of the relative importance of these auxiliary variables. The model is run open-loop, so all control inputs remain at 0, i.e., they do not deviate from the trim value for the linear model and no actuator bias is present. All 10 health parameters are shifted randomly up to 3 percent in the direction of degradation, and these shifts result in shifts in the measured variables. The linear truth model and Kalman filter estimator use the same A , B , C , and D matrices, but the truth model has all 10 health parameters entering through the L , M , and N matrices. The Kalman filter is set up using the system in equation (12) with a seven-element q vector.

To demonstrate the optimality of the SVD-based tuner approach, it was compared to the Kalman filter approach that uses health parameter-based tuners. To make the comparison as meaningful as possible, the health parameter tuners were chosen specifically to be compatible with the metric used by the SVD approach (eq. 4). Structurally the Kalman filter is designed to estimate seven selected health parameter tuners (while assuming the others remain constant) and the corresponding columns of L , M , and N are retained. An optimal selection process based on orthogonal least squares (OLS) (refs. 13 and 14) is used to determine which health parameters to estimate. Briefly, the scaled G matrix (from step 2 in the design procedure, the same one as used for the SVD-based tuners) is multiplied by a random health parameter vector p whose 10 elements take on values from 0 to 3 percent in the appropriate direction (positive for the HPT and LPT flow capacities, negative for all others). OLS is used to choose the seven columns of G that best align with the shift vector $\delta = Gp$. This is repeated thousands of times for different random p vectors and the results are tallied. The individual columns that are selected most often determine the health parameters that on average best capture the degradation-induced shifts. The most often selected columns are indicated by asterisks (*) in table 1. Of the 120 (10 choose 7) possible sets of columns, this exact set was selected about 9 percent of the time.

TABLE 1.—STATE VARIABLES, HEALTH PARAMETERS, AND ACTUATORS

State Variables	Health Parameters	Actuators
XN12	FAN efficiency [†]	WF36
XN25	FAN flow capacity ^{**§}	VBV
TMHS23	LPC efficiency [‡]	VSV
TMHS3	LPC flow capacity ^{§§}	
TMBRNL	HPC efficiency [‡]	
TMBRNC	HPC flow capacity ^{**§}	
TMHS41	HPT efficiency ^{§§}	
TMHS42	HPT flow capacity ^{**§}	
TMHS5	LPT efficiency [§]	
	LPT flow capacity [§]	

Results

To demonstrate the ability of the optimal tuners to approximate a variety of health parameter-induced shifts well, all 10 health parameters are shifted randomly. The results

TABLE 2.—SENSOR SETS AND SENSOR STANDARD DEVIATION (STD. DEV. AS % OF STEADY-STATE VALUES AT FULL POWER)

Conventional Sensor Set	New Sensor Set	Standard Deviation (%)
XN12	XN12	0.25
XN25	XN25	0.25
-----	P17	0.50
P25	-----	0.50
T25	T25	0.75
PS3	PS3	0.50
T3	T3	0.75
T49	T49	0.75

TABLE 3.—AUXILIARY OUTPUTS TO BE ESTIMATED IN FLIGHT

Auxiliary Outputs
WR2A
FN
FG
SMW12
SMW2
SMW25

shown are for a representative random sequence, many simultaneous random shifts were performed at this operating point with similar results. Figure 1 shows the state variable estimation over a time sequence containing 10 such sets of random shifts. Generally the variables are reconstructed accurately with the exception of TMBRNC, combustor case metal temperature, which does not seem to have much of an effect on any other variables.

Figure 2 shows the output variables for the same sequence of health parameter shifts. These also demonstrate good matching, which is to be expected when using a Kalman filter.

Figure 3 shows the auxiliary parameters. For all cases of health parameter shifts both estimators performed well. Because of the large gains on some of the auxiliary variables, the estimates needed to be low-pass filtered to attenuate the magnified noise level. The estimation performance on net and gross thrust and two of the three stall margins, as well as total fan corrected flow was consistently accurate. The only auxiliary parameter whose estimate was consistently poor is LPC stall margin, SMW2. Adjustment of the weighting matrix W in step 2 of the design procedure made little difference in the results.

In an effort to obtain a better LPC stall margin estimate, new U^* and V^* were determined, this time using SMW2 as the only auxiliary parameter, i.e., N in equation (3) has only one row. If SMW2 requires different information than the other variables for accurate estimation, generating a new G matrix would result in a different SVD (the SVD of a matrix is unique) possibly prioritizing the tuners such that SMW2 could be reconstructed. Even with the new G matrix though, the estimation of SMW2 is poor. This may be due to the L and M matrices dominating the generation of the U^* and V^* matrices, but it is more likely a sensor placement issue (in fact, replacing P17 with P25 greatly improves the estimation of SMW2, even without additional weighting).

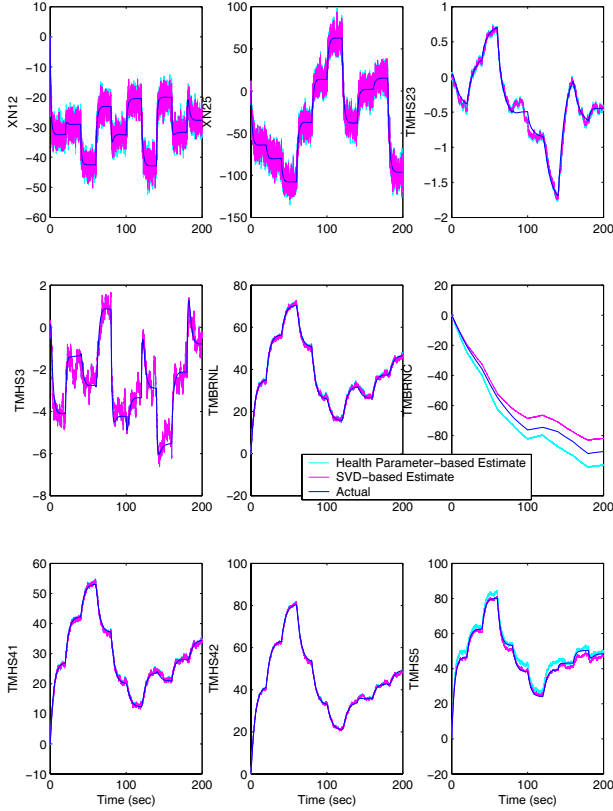


Figure 1.—State variables: scaled actual and estimates.

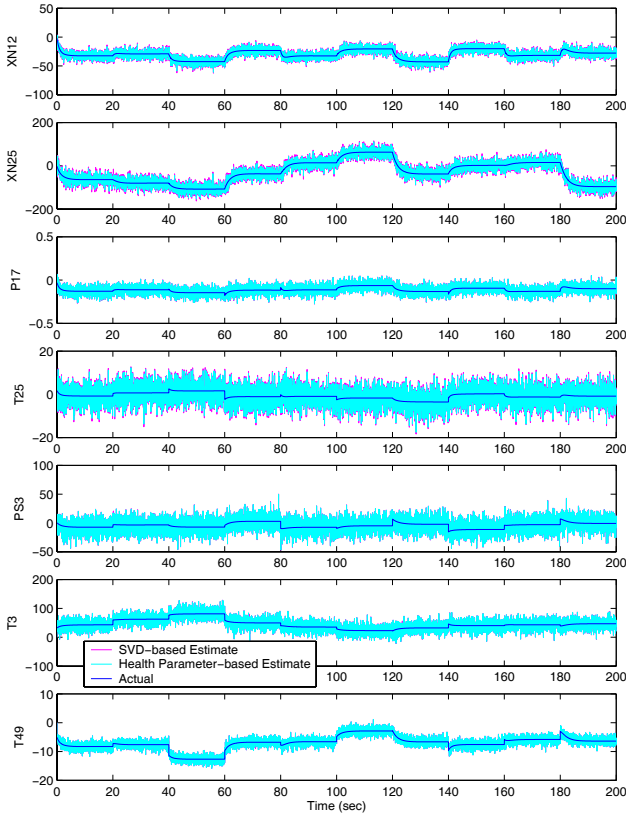


Figure 2.—Output parameters: scaled actual and estimates.

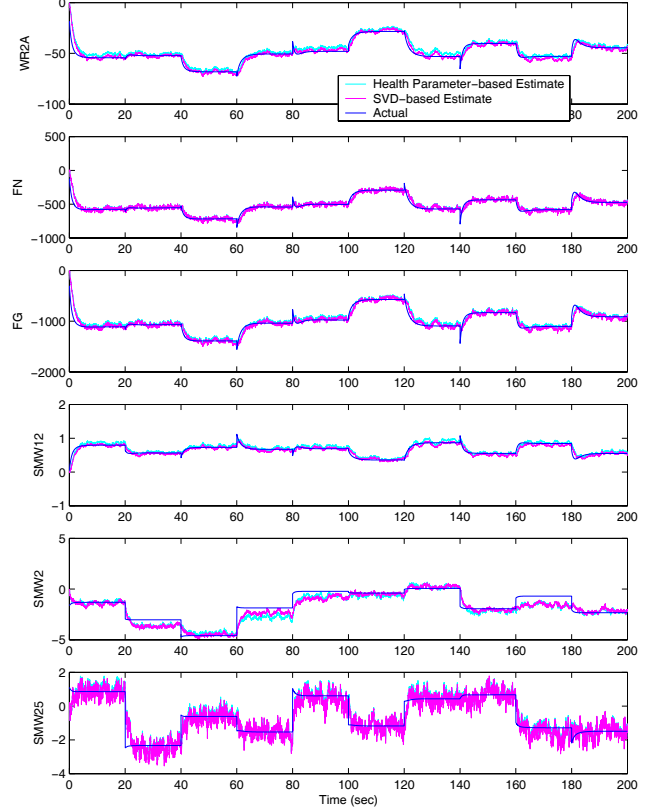


Figure 3.—Auxiliary parameters: scaled actual and filtered estimates.

Likewise, a slight improvement in net and gross thrust estimation was achieved by the SVD-based tuners when the auxiliary parameters consisted of only those two variables.

In order to compare the performance of the tuners statistically, runs containing a sequence of 400 simultaneous random shifts of all 10 health parameters were performed. After each set of shifts the engine simulation was allowed to reach steady state and data from each variable were gathered and averaged. This information was used to compute an average percent error for each variable in steady state over the entire sequence. The quantity was computed as

$$\%error = \frac{100}{400} \sum_{i=1}^{400} \left| \frac{\text{actual deviation}_i - \text{estimated deviation}_i}{\text{trim value}_i} \right|$$

$$\approx \frac{100}{400} \sum_{i=1}^{400} \left| \frac{\text{actual}_i - \text{estimate}_i}{\text{actual}_i} \right|$$

The comparison of the percent estimation error of the state variables, outputs, and auxiliary outputs based on this run for the two sets of tuners are presented in table 4, table 5, and table 6, respectively. It can be seen that both sets of tuners produce similar results in most cases, but where the error is relatively large (TMBNC in table 4 and SMW2 and SMW25 in table 6), the SVD-based tuners are significantly better. Results for the estimated degradation-induced shifts in each variable, $\delta = Gp$ (eq. 3), were similar. The value of the metric (eq. 4) for the scaled shifts in the two cases was 2.187 for the SVD-based

tuners and 6.016 for the health parameter-based tuners. It must be noted that minimization of the metric does not in itself guarantee minimization of the total least squares error without appropriate weighting in step 2 of the design procedure. In this example, the SVD-based tuners give a value of 42.6865 for the sum of the squared percent estimation error of the variables in table 4, table 5, and table 6, compared to 95.4661 for the health parameter-based tuners.

TABLE 4.—PERCENT ERROR OF STATE VARIABLE ESTIMATES

State Variables	SVD-based Tuners	Health Parameter-based Tuners
XN12	0.0318	0.0317
XN25	0.0269	0.0267
TMHS23	0.0129	0.0130
TMHS3	0.0363	0.0363
TMBRNL	0.0278	0.0306
TMBRNC	0.4083	1.1256
TMHS41	0.0300	0.0313
TMHS42	0.0267	0.0274
TMHS5	0.3208	0.1942

TABLE 5.—PERCENT ERROR OF OUTPUT ESTIMATES

Outputs	SVD-based Tuners	Health Parameter-based Tuners
XN12	0.0317	0.0318
XN25	0.0286	0.0285
P17	0.0634	0.0633
T25	0.0859	0.0857
PS3	0.1027	0.1027
T3	0.0990	0.0990
T49	0.0748	0.0748

TABLE 6.—PERCENT ERROR OF AUXILIARY OUTPUT ESTIMATES

Auxiliary Outputs	SVD-based Tuners	Health Parameter-based Tuners
WR2A	0.1081	0.0787
FN	0.2704	0.2745
FG	0.1225	0.1169
SMW12	0.4348	0.3469
SMW2	6.1605	9.3142
SMW25	2.0326	2.6733

Additionally, estimation performance was evaluated for comparable sequences of 400 random simultaneous shifts in all 10 health parameters with six sensors and with eight sensors. For the eight-sensor case, P25 was added to the “new sensor set” of seven shown in table 2. The tuners used were the first eight health parameters, indicated by a (‡) in table 1, (LPT efficiency and flow capacity were not used), selected using OLS. As expected, the estimate of SMW2, which was poor with only seven sensors, was much more accurate, as was the estimate of TMBRNC. For eight sensors, the value of the metric for the SVD-based tuners was 2.0883 and 6.5243 for the health parameter-based tuners; this is essentially the same as for the seven sensor case, with the difference being attributed to the random factors of sensor noise and the health parameter shifts. The sum of the squared percent estimation error for the SVD-based tuners was 6.0438 compared to 7.1943 for the health

parameter-based tuners. For the six sensor case, the T3 sensor was removed from the “new sensor set” shown in table 2. The tuners used were the flow capacities of each component plus HPT efficiency, indicated by (§) in table 1, which were selected using engineering judgment. It was possible to get reasonably good matching of the auxiliary outputs with this set of tuners, but no set investigated produced accurate reconstruction of the state variables. The value of the metric for the SVD-based tuners in the six-sensor case was 9.4068 and 12.4667 for the health parameter-based tuners. The big increase in the metric values over the cases with more sensors indicates that significant information has been lost by approximating the G matrix by a rank six matrix. The relative size of the dropped singular values gives an indication of this. In this case, the sum of the squared percent estimation error for the SVD-based tuners was 53.8702 compared to 78.1314 for the health parameter-based tuners.

Further Application of Tuners

The example shows that the optimal tuner selection method obtained using SVD provides accurate estimates of most variables of interest, including auxiliary parameters such as thrust. The SVD formulation has several attractive properties that make its use in this application highly desirable beyond what has already been discussed. In addition to providing the least squares solution to the approximation of the shift vector δ , other features include 1) the approximation error to the matrix G is known; 2) fault detection is possible through the tuners’ ability to capture sudden shifts, even if the tuners do not correspond to individual health parameters; and 3) the orthogonality of the V matrix suggests a way to isolate a component fault, while at the same time some of the true health parameter shifts may be able to be reconstructed accurately, in some cases. The following sections provide more detail on each of these topics.

Approximation Error of G

Since

$$G = \sum_{i=1}^n \sigma_i u_i v_i^T = \sum_{i=1}^k \sigma_i u_i v_i^T + \sum_{i=k+1}^n \sigma_i u_i v_i^T = \hat{G} + \sum_{i=k+1}^n \sigma_i u_i v_i^T \quad (13)$$

the approximation error of G is the last term of equation (13), namely

$$\tilde{G} = G - \hat{G} = \sum_{i=k+1}^n \sigma_i u_i v_i^T.$$

The error in the approximation of G depends on both the number of terms dropped in the approximation and on the size of the singular value in each dropped term. (Singular values give an indication of the linear independence of the columns of G , so if the singular values in the dropped terms are very small, not much information is lost, but on the other hand, if the columns of G are not linearly independent, the accurate estimation of the health parameters is impossible, regardless of the number of sensors.) The fact that the error is known allows,

for instance, the calculation of accuracy bounds on the health parameter-induced shifts, δ , and on the estimated variables themselves.

The error introduced into the system equations (eq. 12) through the approximation of G represents modeling error. The process noise term, e , in the state equation, is used at least partially to represent model uncertainty, so a level can be established by multiplying the known approximation error \tilde{G} by a range of degradation values p . Since the level of degradation is unknown *a priori*, it can be considered a random variable and thus so can $\tilde{G}p$. The covariance of this product could be used to help determine the process noise covariance matrix, Q , for the Kalman filter, which is often considered a design parameter.

Fault Detection

Even though the tuners do not represent individual health parameters, component faults can be detected by sudden shifts. The objective of fault detection in this context is to be able to distinguish an abrupt shift representing a fault, from the general “background level” of degradation caused by use and wear, represented by slowly varying q during normal operation. Since $q = V^*p$, the shifts are mapped into q as long as they are not limited to the null space of V^* , that is, as long as they do not lie completely within the span of $[v_{k+1} \cdots v_n]^T$. However, since

this space contains the least significant directions of possible shift (since only the smallest singular values are dropped) and the tuners will, in general, cut across rather than align with the influence of each health parameter, additional shifts due to faults $\Delta q = V^* \Delta p$ will very likely be non-zero for any significant shift in an element of p .

TABLE 7.—HEALTH PARAMETER SHIFTS REPRESENTING COMPONENT FAULTS

Time (sec)	Health Parameters	Shift
0-20	FAN efficiency	-3%
20-40	FAN flow capacity	-3%
40-60	LPC efficiency	-3%
60-80	LPC flow capacity	-3%
80-100	HPC efficiency	-3%
100-120	HPC flow capacity	-3%
120-140	HPT efficiency	-3%
140-160	HPT flow capacity	3%
160-180	LPT efficiency	-3%
180-200	LPT flow capacity	3%

To demonstrate this, component faults of 3 percent magnitude were injected, sustained for 20 seconds, and removed, in succession through each of the 10 health parameters (efficiency then flow capacity for each component in the order shown in table 1), as shown in table 7. Figure 4 shows the estimated tuners during this sequence of shifts. As the health parameters shift, the tuners generally shift as well, so changes can be determined and thus faults can be detected. The fan efficiency fault is hard to determine as the tuner shifts that correspond to it are small, but several tuners clearly shift in

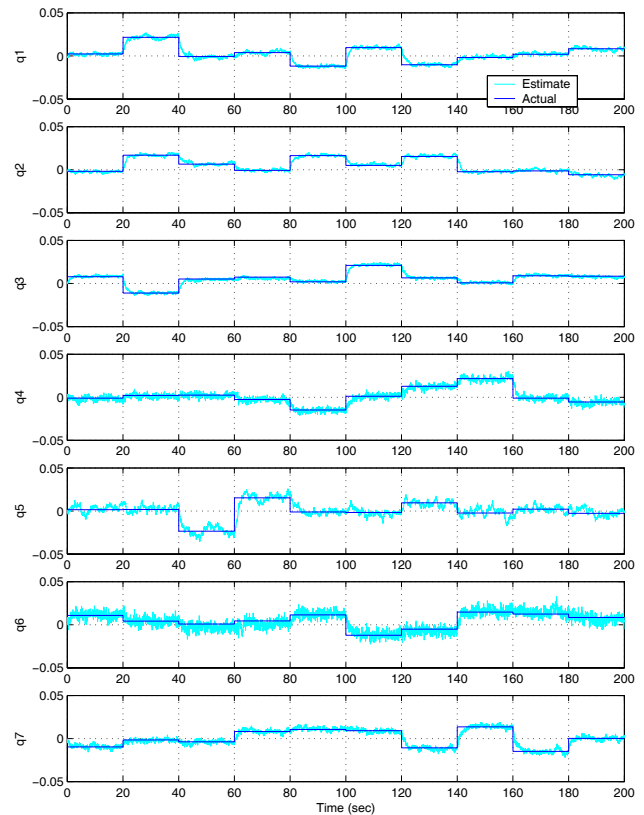


Figure 4.—Estimated q signals and V^*p , demonstrating fault detection.

response to a fault in fan flow capacity. When looking at all tuners together, it is reasonably clear in most cases when a fault has occurred. Different sets of tuners result from different weightings of the G matrix (step 2 of the design procedure), and it is possible to have at least one of the SVD-based tuners align well with an actual health parameter.

One thing that is clear from figure 4 is that in this example, the elements of q are tracked accurately, and this is a consequence of the procedure used to select them. This is not the case in general when the tuners are modeled as actual health parameters. Figure 5 shows the Kalman filter estimates of the health parameter-based tuners with the same input sequence as in figure 4. In figure 5, the tuners clearly indicate abrupt shifts due to faults, but often do not match the health parameters they represent because of the influence of unmodeled health parameters and sensor uncertainty (refs. 15 to 18). From a diagnostics point of view this is fine, but there is no guarantee that those health parameters will facilitate good reconstruction of auxiliary parameters such as thrust.

The ability to estimate the state and auxiliary variables in the presence of actuator bias is not addressed here. From equation (1) it is clear that the effect of actuator bias is no different than that of health parameter shifts, so as long as the tuners can capture this effect, the results should not deteriorate significantly. As with component degradation and faults,

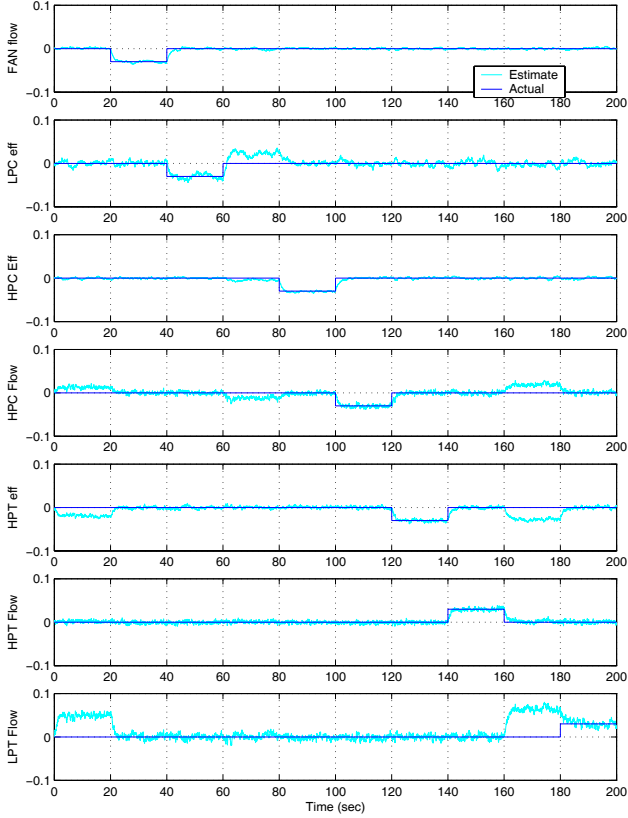


Figure 5.—Estimated health parameter-based tuners.

constant actuators biases should be generally represented by the elements of q , and any sudden actuator shifts due to bias should be captured as shifts in the elements of q .

Fault Isolation

By construction, the vector of estimated tuners $\hat{q} \approx V^* p$, (since G is not perfectly recreated by $U^* V^*$, the estimated q will not exactly equal $V^* p$, even in a noise-free environment) and the columns of V are orthonormal. Of course V is a square $n \times n$ matrix and V^* is $k \times n$, but if k is close to n , in some cases $V^{*T} V^* \approx I_n$. The implication of this is that $V^{*T} \hat{q} \approx p$, so even if the magnitude of the shift is not determined accurately, the shift might be able to be isolated to the affected health parameters (or at least the affected component) by identifying those elements of the $V^{*T} \hat{q}$ vector with the largest shifts. Analysis of the V^* matrix will determine the feasibility of the approach on a case by case basis.

It is interesting to note that the $V^{*T} \hat{q} \approx p$ approximation is actually the least squares estimate of p from equation (3). This is clear from the fact that

$$\begin{aligned} \hat{\delta} &= U^* \hat{q} = U_k \Sigma_k \hat{q} \approx G p = U \Sigma V^T p \\ \Rightarrow p_{LS} &= V \Sigma^* U^{-1} U_k \Sigma_k \hat{q} = V_k \hat{q} = V^{*T} \hat{q} \end{aligned} \quad (14)$$

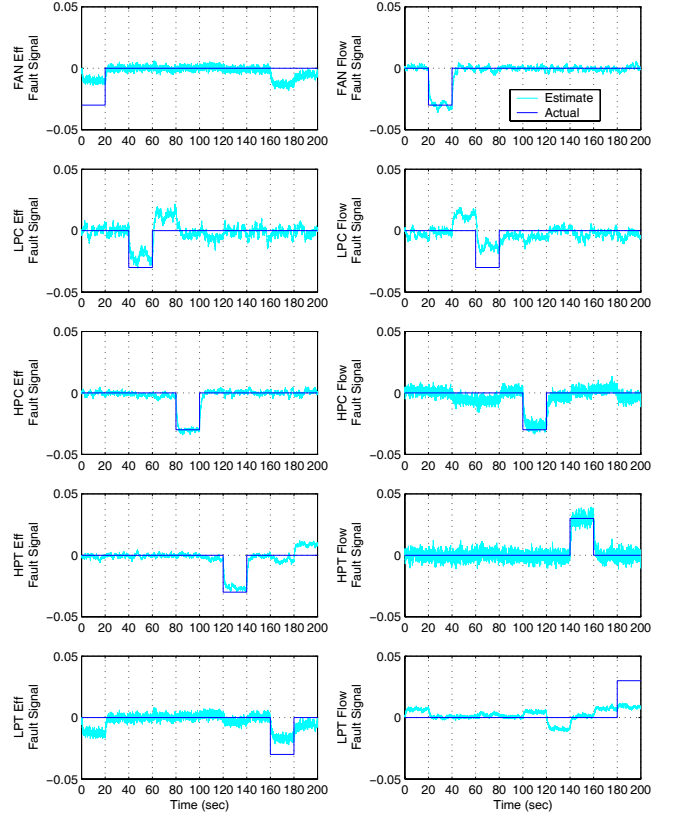


Figure 6.—Fault signal $\hat{p} \approx V^{*T} \hat{q}$ and actual health parameter shift, demonstrating fault isolation.

where Σ^\dagger is the transpose of Σ with the square singular value block inverted. Note that once U is unscaled in step 4 of the design procedure it is no longer orthonormal, so U^{-1} rather than U^T is used in equation (14).

Figure 6 shows the recreated set of health parameters using $\hat{p} \approx V^{*T} \hat{q}$. It is clear that shifts in certain variables are easily isolated while others are mapped back as shifts smeared across more than one health parameter. For this example, it seems that health parameter shifts in the high-pressure shaft components (HPC and HPT) are easier to isolate than those on the low-pressure shaft. For instance, the plots for FAN efficiency and LPT efficiency are very similar, meaning that it would be hard for a diagnostic system to distinguish between them. Efficiency and flow capacity of the LPC are clearly interrelated, with one being nearly the opposite of the other; for cases such as this, one might constrain the problem by assuming that efficiency and flow capacity corresponding to a single component shift together, somewhat simplifying the isolation logic. The issue always exists of simultaneous shifts in the health parameters of multiple components confounding the problem.

It is interesting to compare the results in figure 6 with those in figure 5, which shows the Kalman filter estimates of seven health parameter-based tuners. The quality of the reconstruction is similar in that the same three parameters (FAN flow capacity, HPC efficiency, and HPT flow capacity)

were estimated accurately in both cases and those estimates corrupted by unmodeled shifts in health parameters were the same in both cases, but the approach demonstrated in figure 6 has the benefit that the remaining three health parameters are reconstructed as well, albeit corrupted by shifts in other variables. One observation is that the reconstruction of each of these remaining health parameters (FAN efficiency, LPC flow capacity, and LPT efficiency) is strongly related to the reconstruction of some other health parameter, underscoring the lack of observability. Still, a diagnostic system might be able to use this information to isolate faults.

If actuator bias, u_{bias} , were to be added on top of the health parameter deviations, it would certainly make the fault isolation task more challenging. An approach to address this is to define G such that

$$\delta = \begin{bmatrix} L & B \\ M & D \\ N & F \end{bmatrix} \begin{bmatrix} p \\ u_{bias} \end{bmatrix} = G \begin{bmatrix} p \\ u_{bias} \end{bmatrix}.$$

This explicitly accounts for actuator bias, but the increase in the number of columns of G means that the U^*V^* approximation will be less accurate, since the size of q is fixed. A consequence of this is that $V^{*T}V^*$ is further from I_n (in the sense of the Frobenius norm) and thus the $[p^T u_{bias}^T]^T \approx V^{*T}q$ approximation is not as good as when fewer faults are accounted for.

Conclusions

A new optimal linear point design approach to determine engine deterioration tuning parameters that enables the accurate reconstruction of unmeasured engine outputs was presented. It was designed specifically for the case where there are too few sensors to estimate the true engine health parameters. The tuning parameters are determined using singular value decomposition, which was shown to generate the best approximation to the influence of the full set of health parameters in a least squares sense, using a set small enough to be estimated. A concise design procedure to generate the tuners was described. An example demonstrated that the method worked well in reconstructing the unmeasured parameters of interest. It was shown to perform better against its metric than a health parameter-based Kalman filter specifically designed for the metric used, and it will generally result in a smaller total squared estimation error with appropriate weighting incorporated into the metric. This highlights the freedom inherent in the SVD-based approach as a result of the weighting, while the selection of possible subsets of health parameters for tuners is limited. Still, the choice of weights in the SVD approach is not arbitrary since the variables interact, and allowing poor state estimation, for instance, will ultimately hurt the accuracy of the auxiliary variables. It was also shown that the ability to estimate well is sensitive to sensor placement. As a side benefit of the estimator formulation process, the tuners have desirable properties for diagnostics because of the orthogonal decomposition. In particular, the reconstruction of the complete set of health parameters compares favorably to the

estimation of only a subset by a health parameter-based Kalman filter. The effect of actuator bias was not investigated with respect to the optimal tuners determined for health parameter degradation, however a consistent approach to account for it explicitly was proposed.

Areas of future research involve the generation of bounds on the accuracy of the low rank matrix approximation and their effect on estimation, the continuity of the SVD for piece-wise linear implementations, and further investigation into the fault detection and isolation properties of the SVD formulation.

References

1. Luppold, R.H., Gallops, G.W., Kerr, L.J., Roman, J.R., 1989, "Estimating In-Flight Engine Performance Variations Using Kalman Filter Concepts," AIAA-89-2584.
2. Turevskiy, A., Meisner, R., Luppold, R.H., Kern, R.A., and Fuller, J.W., 2002, "A Model-Based Controller for Commercial Aero Gas Turbines," ASME Paper GT2002-30041.
3. Kobayashi, T., Simon, D.L., Litt, J.S., 2005, "Application of a Constant Gain Extended Kalman Filter for In-Flight Estimation of Aircraft Engine Performance Parameters," ASME Paper GT2005-68494.
4. Brotherton, T., Volponi A., Luppold, R., Simon, D.L., 2003, "eSTORM: Enhanced Self Tuning On-board Real-time Engine Model," Proceedings of the 2003 IEEE Aerospace Conference.
5. Kobayashi, T., Simon, D.L., 2003, "Application of a Bank of Kalman Filters for Aircraft Engine Fault Diagnostics," ASME Paper GT2003-38550.
6. Kobayashi, T., Simon, D.L., 2004, "Evaluation of an Enhanced Bank of Kalman Filters for In-Flight Aircraft Engine Sensor Fault Diagnostics," ASME Paper GT2004-53640.
7. Stamatis, A., Mathioudakis, K., Papailiou, K.D., 1990, "Adaptive Simulation of Gas Turbine Performance," Journal of Engineering for Gas Turbines and Power, 112, pp. 168-175.
8. Tsalavoutas, A., Mathioudakis, K., Stamatis, A., Smith, M., 2001, "Identifying Faults in the Variable Geometry System of a Gas Turbine Compressor," Journal of Turbomachinery, 123, pp. 33-39.
9. Ogaji, S.O.T., Sampath, S., Singh, R., Probert, S.D., 2002, "Parameter Selection for Diagnosing a Gas-Turbine's Performance-Deterioration," Applied Energy, 73, pp. 25-46.
10. España, M.D., 1994, "Sensor Biases Effect on the Estimation Algorithm for Performance-Seeking Controllers," Journal of Propulsion and Power, 10, pp. 527-532.
11. Callier, F.M., and Desoer, C.A., 1991, Linear Systems Theory, Springer-Verlag, New York, p. 240.
12. Stewart, G.W., 1973, Introduction to Matrix Computations, Academic Press, New York, pp. 322-324.
13. Chen, S., Billings, S.A., Luo, W., "Orthogonal Least Squares Methods and Their Application to Non-Linear

- System Identification,” 1989, *International Journal of Control*, 50, pp. 1873–1896.
14. Chen, S., Cowan, C.F.N., Grant, P.M., 1991, “Orthogonal Least Squares Learning Algorithm for Radial Basis Function Networks,” *IEEE Transactions on Neural Networks*, 2, pp. 302–309.
 15. Stamatis, A., Mathioudakis, K., Papailiou, K.D., 1992, “Optimal Measurement and Health Index Selection for Gas Turbine Performance Status and Fault Diagnosis,” *Journal of Engineering for Gas Turbines and Power*, 114, pp. 209–216.
 16. Grönstedt, T.U.J., 2002, “Identifiability in Multi-Point Gas Turbine Parameter Estimation Problems,” *ASME Paper GT2002–30020*.
 17. Pinelli, M., Spina, P.R., 2002, “Gas Turbine Field Performance Determination: Sources of Uncertainties,” *Journal of Engineering for Gas Turbines and Power*, 124, pp. 155–160.
 18. Mathioudakis, K., Kamboukos, Ph., 2004, “Assessment of the Effectiveness of Gas Path Diagnostic Schemes,” *ASME Paper GT2004–53862*.

REPORT DOCUMENTATION PAGE			Form Approved OMB No. 0704-0188	
Public reporting burden for this collection of information is estimated to average 1 hour per response, including the time for reviewing instructions, searching existing data sources, gathering and maintaining the data needed, and completing and reviewing the collection of information. Send comments regarding this burden estimate or any other aspect of this collection of information, including suggestions for reducing this burden, to Washington Headquarters Services, Directorate for Information Operations and Reports, 1215 Jefferson Davis Highway, Suite 1204, Arlington, VA 22202-4302, and to the Office of Management and Budget, Paperwork Reduction Project (0704-0188), Washington, DC 20503.				
1. AGENCY USE ONLY (Leave blank)		2. REPORT DATE October 2005		3. REPORT TYPE AND DATES COVERED Technical Memorandum
4. TITLE AND SUBTITLE An Optimal Orthogonal Decomposition Method for Kalman Filter-Based Turbofan Engine Thrust Estimation			5. FUNDING NUMBERS WBS-22-303-30-72 1L161102AF20	
6. AUTHOR(S) Jonathan S. Litt				
7. PERFORMING ORGANIZATION NAME(S) AND ADDRESS(ES) National Aeronautics and Space Administration John H. Glenn Research Center at Lewis Field Cleveland, Ohio 44135-3191			8. PERFORMING ORGANIZATION REPORT NUMBER E-15234	
9. SPONSORING/MONITORING AGENCY NAME(S) AND ADDRESS(ES) National Aeronautics and Space Administration Washington, DC 20546-0001 and U.S. Army Research Laboratory Adelphi, Maryland 20783-1145			10. SPONSORING/MONITORING AGENCY REPORT NUMBER NASA TM-2005-213864 ARL-TR-3487 GT2005-68808	
11. SUPPLEMENTARY NOTES Prepared for the Turbo Expo 2005 sponsored by the American Society of Mechanical Engineers, Reno, Nevada, June 6-9, 2005. Responsible person, Jonathan S. Litt, organization code RIC, 216-433-3748.				
12a. DISTRIBUTION/AVAILABILITY STATEMENT Unclassified - Unlimited Subject Category: 07 Available electronically at http://gltrs.grc.nasa.gov This publication is available from the NASA Center for AeroSpace Information, 301-621-0390.			12b. DISTRIBUTION CODE	
13. ABSTRACT (Maximum 200 words) A new linear point design technique is presented for the determination of tuning parameters that enable the optimal estimation of unmeasured engine outputs such as thrust. The engine's performance is affected by its level of degradation, generally described in terms of unmeasurable health parameters related to each major engine component. Accurate thrust reconstruction depends upon knowledge of these health parameters, but there are usually too few sensors to be able to estimate their values. In this new technique, a set of tuning parameters is determined which accounts for degradation by representing the overall effect of the larger set of health parameters as closely as possible in a least squares sense. The technique takes advantage of the properties of the singular value decomposition of a matrix to generate a tuning parameter vector of low enough dimension that it can be estimated by a Kalman filter. A concise design procedure to generate a tuning vector that specifically takes into account the variables of interest is presented. An example demonstrates the tuning parameters' ability to facilitate matching of both measured and unmeasured engine outputs, as well as state variables. Additional properties of the formulation are shown to lend themselves well to diagnostics.				
14. SUBJECT TERMS Engine thrust estimation; Aircraft gas turbine engine; Kalman filter; Gas path analysis; Diagnostics; Engine deterioration			15. NUMBER OF PAGES 17	
			16. PRICE CODE	
17. SECURITY CLASSIFICATION OF REPORT Unclassified	18. SECURITY CLASSIFICATION OF THIS PAGE Unclassified	19. SECURITY CLASSIFICATION OF ABSTRACT Unclassified	20. LIMITATION OF ABSTRACT	

